

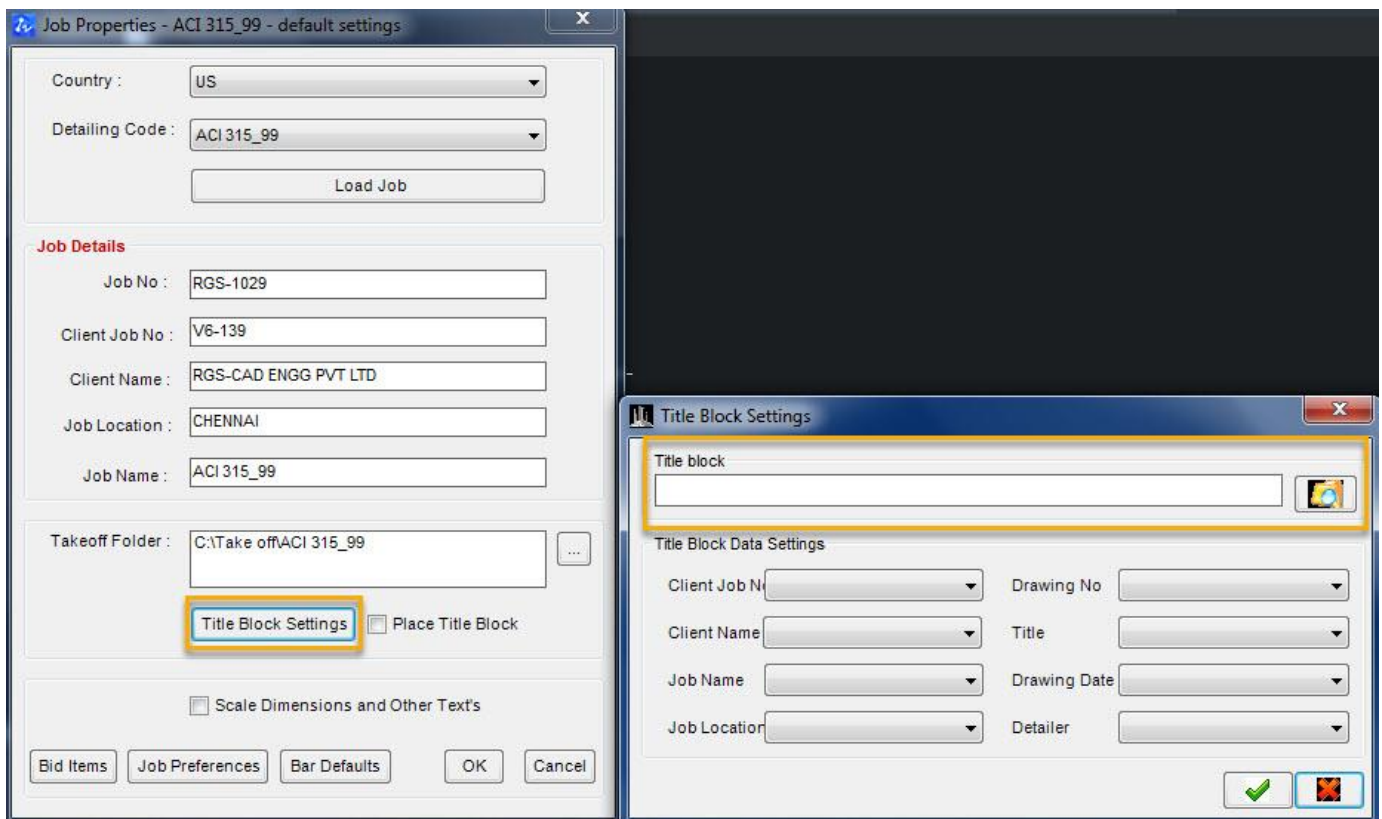


**RGS Rebar** Version 4.0.20  
Compatible with ZW CAD

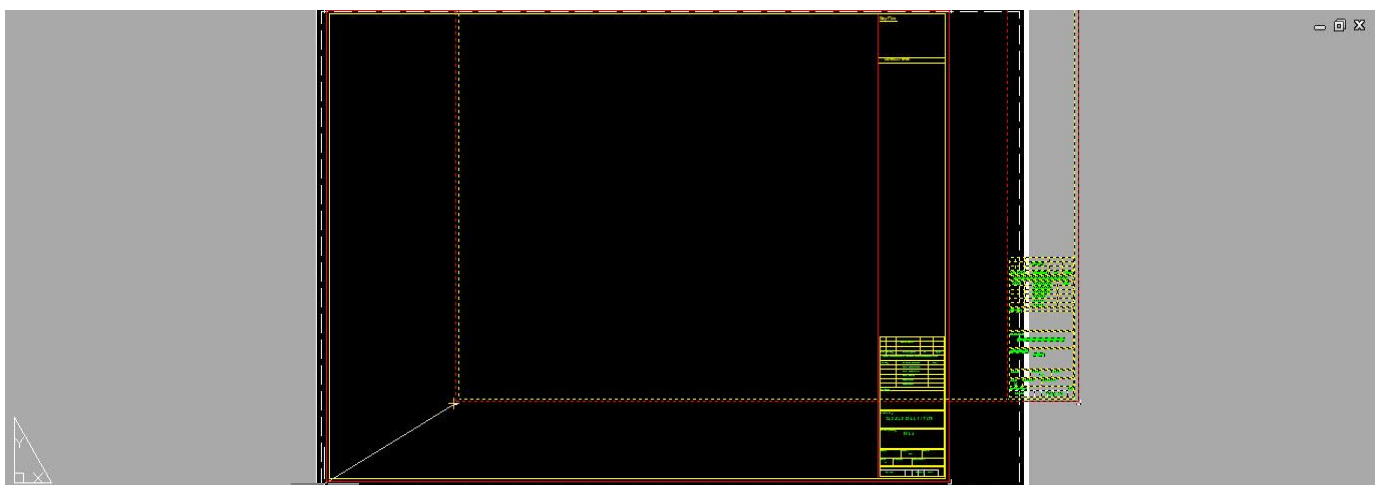
**Release Notes**  
**Date:** 20-Dec-2019

## A) Bug Fixed

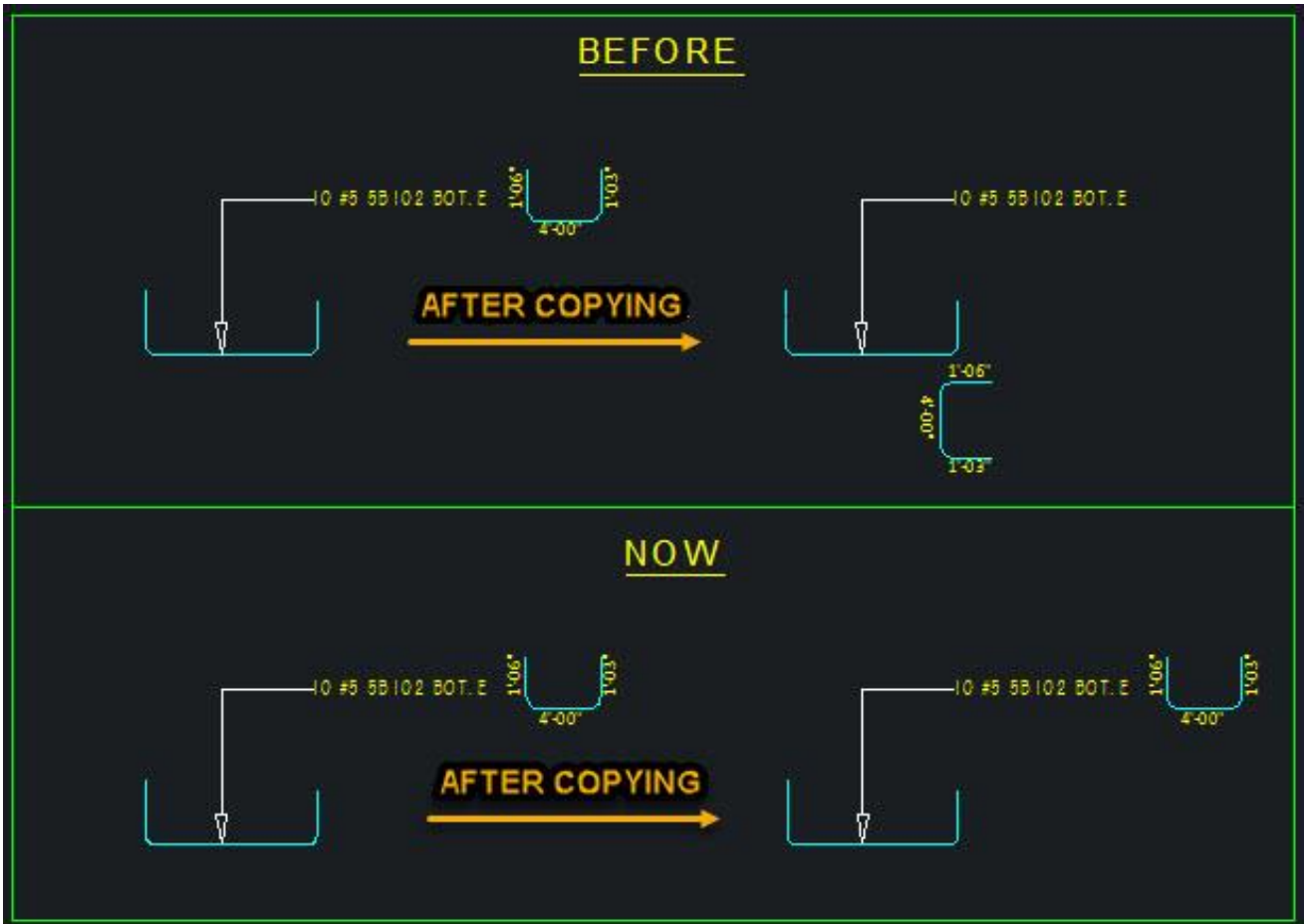
1. **Title Block Selection** – Selection of Title Block in Job Preference Settings has been fixed



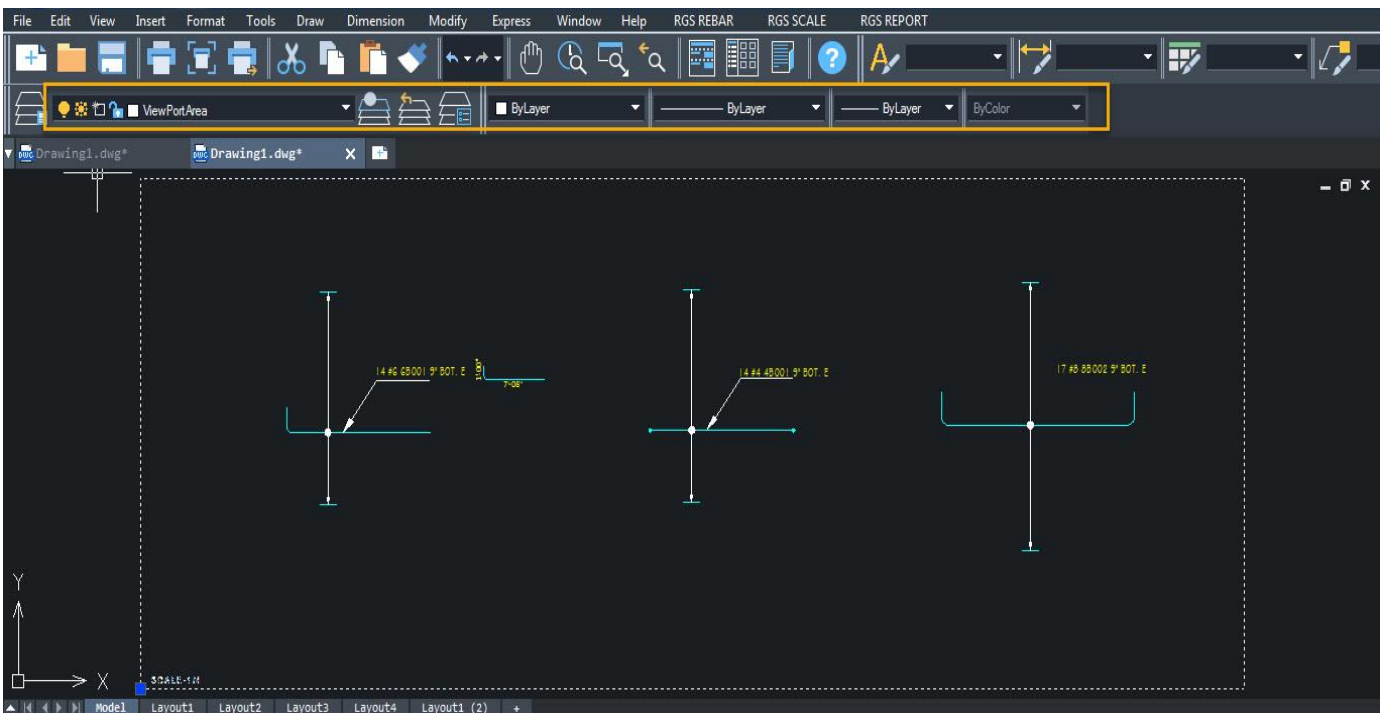
2. **Title Block rearrangement** – Fixed issue on Error message while moving the Title Block in ZW CAD Model or Layout



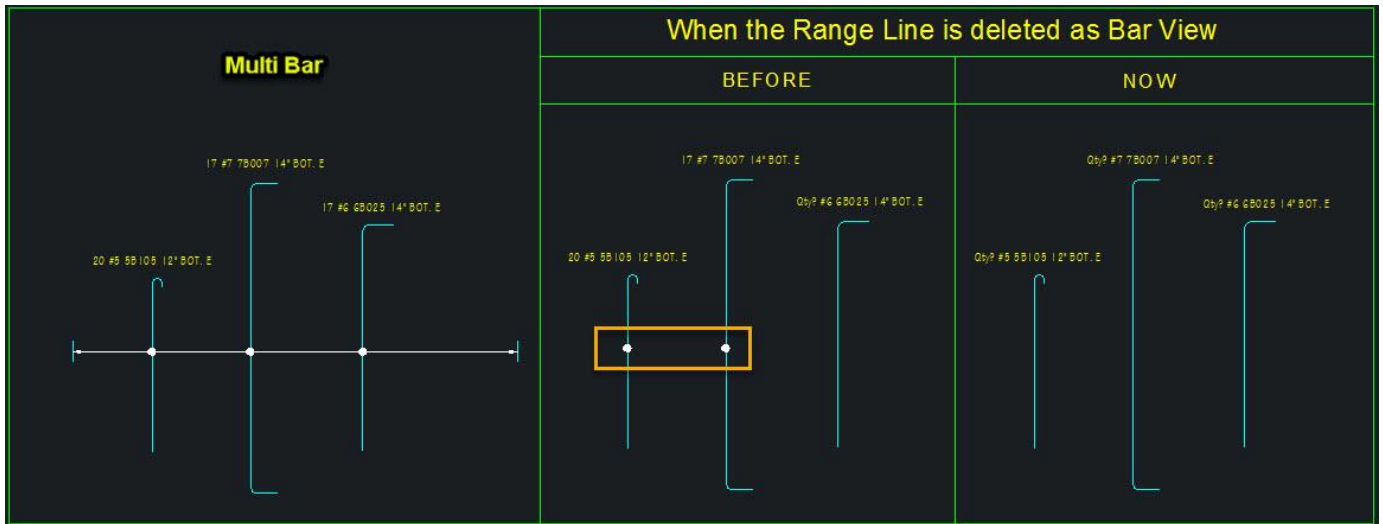
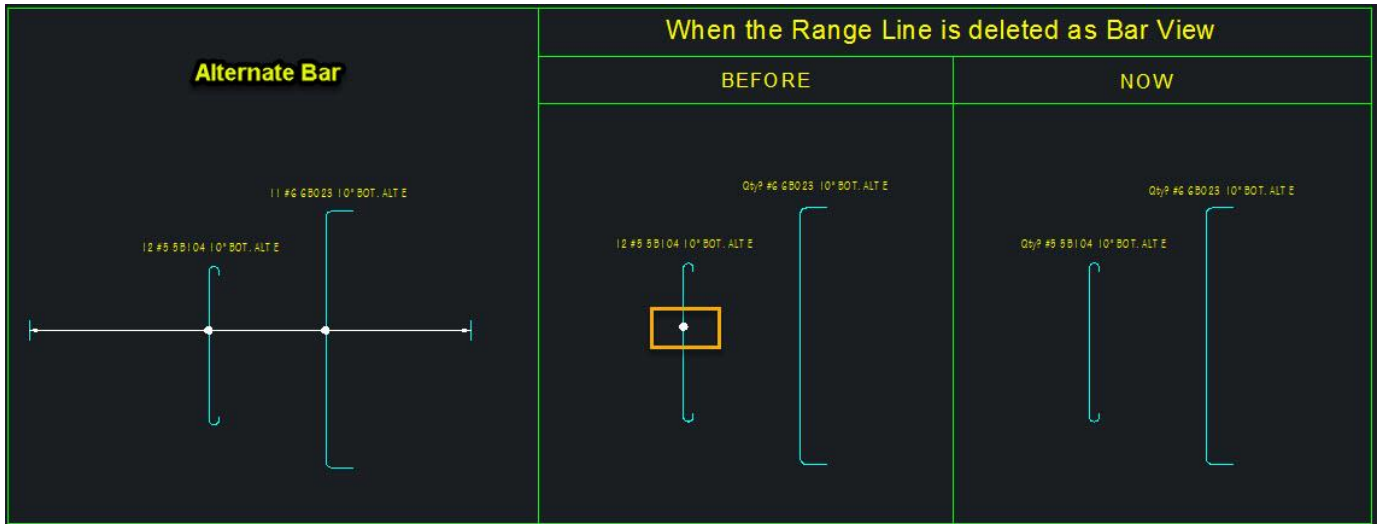
3. **Image Label** – Bug fixed while rotation and copy of Image Label with callouts



4. **Scale Border** – Scale Border taking the current layer property has been fixed and assigned default layer for Scale Borders



5. Alternate Bars/Multi-Bar Multi-Spacing Donuts – Fixed bug of range donut



6. Copied Layout Scale Area – Fixed bugs of Scale Area in Copied Layout

7. Bend Shapes 18 & 20 – increase of leg values of Bend Shapes has been fixed

Rebar Entry - (Rebar is Selected)

Drawing: M02 Release No: 1 Revision No: 0

Bid Item: Area / Pour:

Element Mark: S1 New Element Mark

No of Places / Members: 1 No of Layer / Face: 1

Quantity: 10 Draw Range Draw Leader

Spacing: Inches

Multiple Spacing Sample

Barsize: # 5 View: SIDE Profile Mode

Bend Shape: 18 Bar Mark: SB106

Remarks: BOT. Bar Location

CAD Layer: RGS2

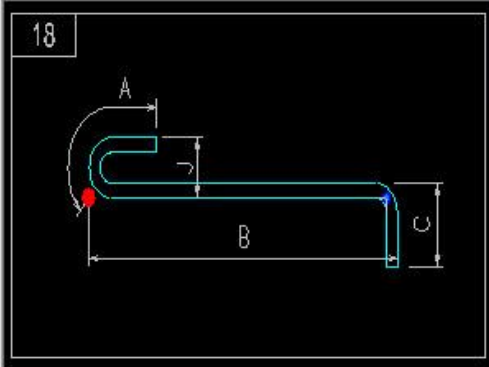
Bar Defaults: Grade: A615-75 Coating: EPOXY LE: None RE: None

Hide Picture Hide Dimension Undefined Special Bend

Bar & Callout Bar Only Callout Only Image Label

Bar Defaults Callout Format Update Bar Close

Picture View Selected View Side View



**Outer-Outer Dimension**

A	B	C	D	E	F
0'-070"	10'-000"	2'-000"	0'-000"	0'-000"	0'-000"
G	H	J	K	O	R
0'-000"	0'-000"	0'-050"	0'-000"	0'-000"	0'-000"

Total Length: Theoretical = 12'-070" Cut = 12'-052"

Cut Length Formula:  $A+B+C-0.2*PD-1.2*DIA$

LAP No of Laps: 0 Length: 0'-000" Clear Legs

**Other Dimensions**

V1	V2	V3	V4	V5
0'-000"	0'-000"	0'-000"	0'-000"	0'-000"

Rebar Entry - (Rebar is Selected)

Drawing: M02 Release No: 1 Revision No: 0

Bid Item: Area / Pour:

Element Mark: S1 New Element Mark

No of Places / Members: 1 No of Layer / Face: 1

Quantity: 10 Draw Range Draw Leader

Spacing: Inches

Multiple Spacing Sample

Barsize: # 4 View: SIDE Profile Mode

Bend Shape: 20 Bar Mark: 4B002

Remarks: BOT. Bar Location

CAD Layer: RGS2

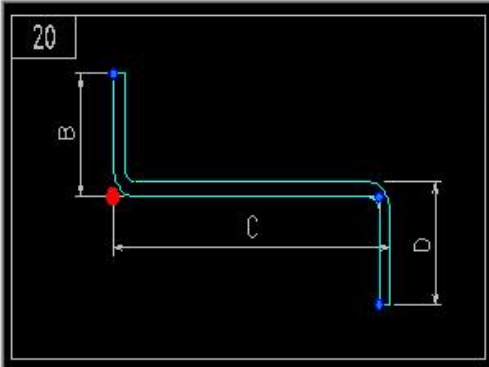
Bar Defaults: Grade: A615-75 Coating: EPOXY LE: None RE: None

Hide Picture Hide Dimension Undefined Special Bend

Bar & Callout Bar Only Callout Only Image Label

Bar Defaults Callout Format Update Bar Close

Picture View Selected View Side View



**Outer-Outer Dimension**

A	B	C	D	E	F
0'-000"	2'-000"	8'-000"	2'-000"	0'-000"	0'-000"
G	H	J	K	O	R
0'-000"	0'-000"	0'-000"	0'-000"	0'-000"	0'-000"

Total Length: Theoretical = 12'-000" Cut = 11'-092"

Cut Length Formula:  $B+C+D-0.4*PD-2.4*DIA$

LAP No of Laps: 0 Length: 0'-000" Clear Legs

**Other Dimensions**

V1	V2	V3	V4	V5
0'-000"	0'-000"	0'-000"	0'-000"	0'-000"

8. **Drawing Number** – Issue of disappearing drawing number in new bar dialogue box fixed

**Rebar Entry - (Rebar is Selected)**

Drawing: **M04** Release No: 01 Revision No: 0

Bid Item: Area / Pour:

Element Mark: **M04** New Element Mark

No of Places / Members: 1 No of Layer / Face: 1

Quantity: 18  Draw Range  Draw Leader

Spacing: Inches Multiple Spacing

Barsize: # 6 View: **SIDE**  Profile Mode

Bend Shape: 17 Bar Mark: 6B026

Remarks: BOT. Bar Location:

CAD Layer: RGS1

Bar Defaults: Grade: A615-75 Coating: Epoxy LE: None RE: None

Hide Picture  Hide Dimension  Undefined Special Bend

Bar & Callout  Bar Only  Callout Only  Image Label

**Picture View**

Selected View  Side View

17

**Outer-Outer Dimension**

A	B	C	D	E	F
0'-000"	2'-000"	5'-060"	1'-060"	0'-000"	0'-000"
G	H	J	K	O	R
0'-000"	0'-000"	0'-000"	0'-000"	0'-000"	0'-000"

Total Length: Theoretical = 9'-000" Cut = 8'-082"

Cut Length Formula:  $B+C+D-0.4*PD-2.4*DIA$

**LAP**

No of Laps: 0 Length: 0'-000"

**Other Dimensions**

V1	V2	V3	V4	V5
0'-000"	0'-000"	0'-000"	0'-000"	0'-000"

9. **BBS shape code diagram** – Fixed BBS blocks as per the scale area

**SCALE-1/2**

**SCALE-1/4**

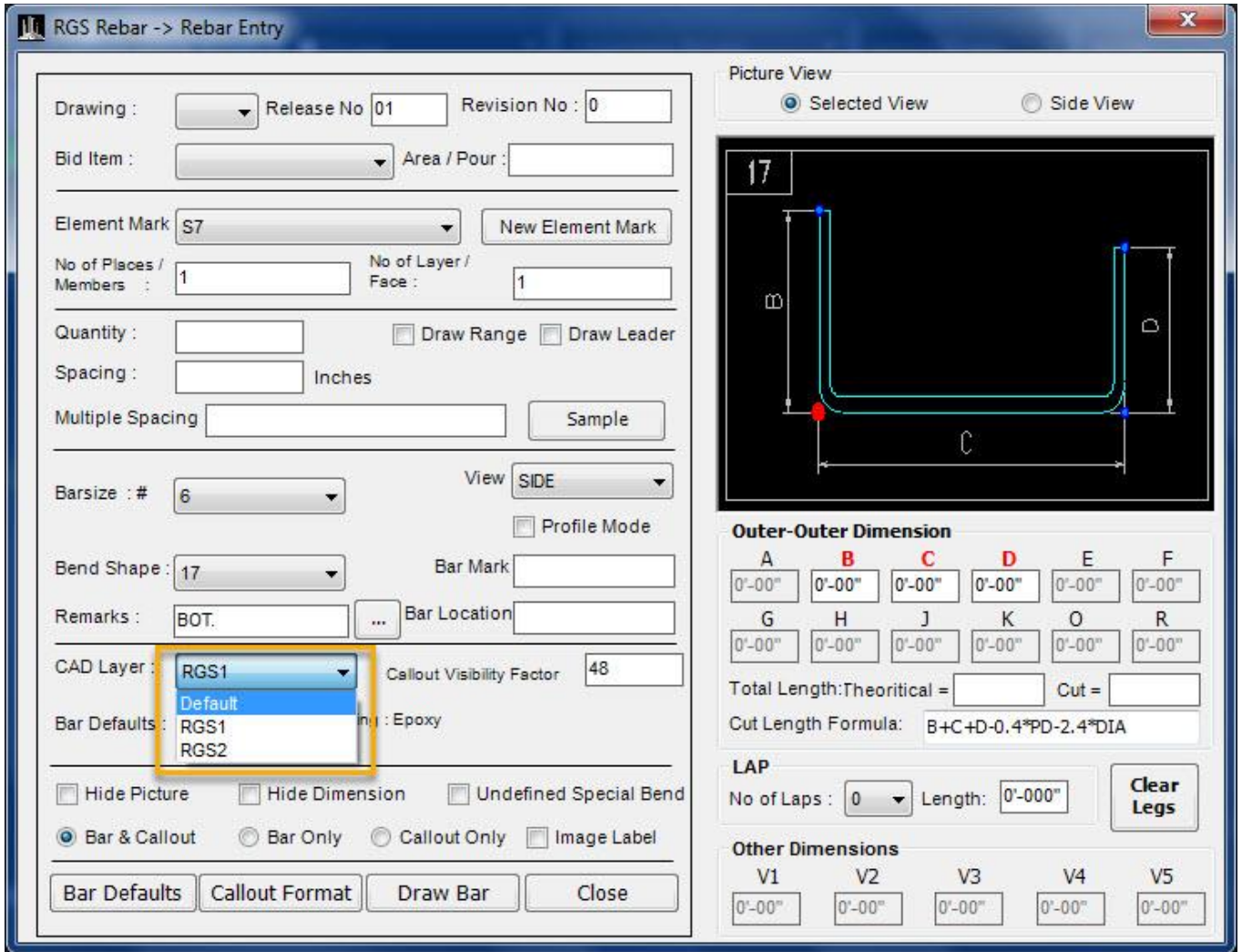
20

17

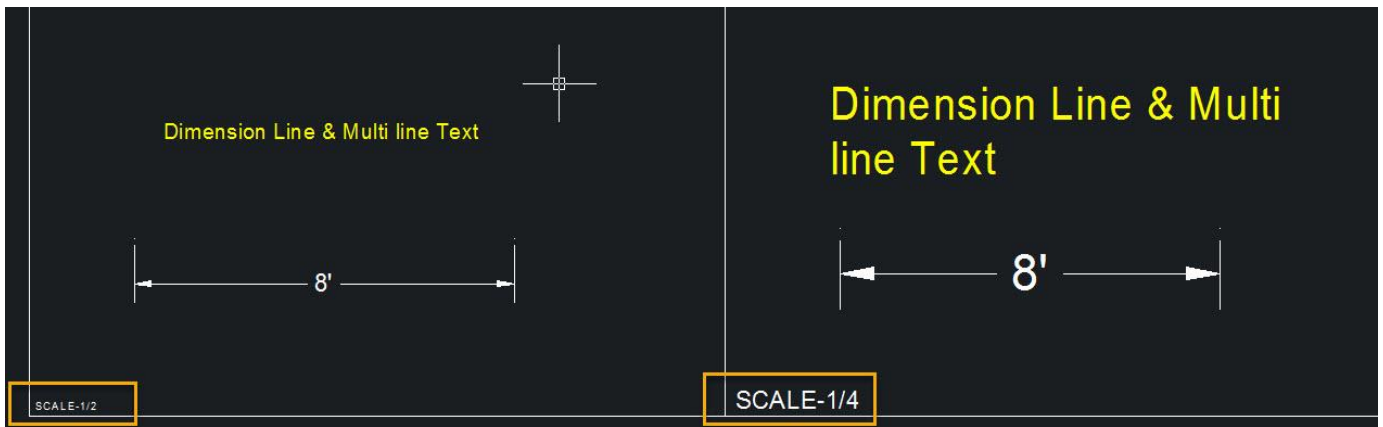
0

3

10. **Rebar Layer in New Bar dialogue box** – Now CAD Layer will update as per the selection in dropdown box



11. **Dimension line and Text Size in Scale Area** – The dimension line arrow head and Multi line Text Size fixed and now it will update as per the Scale area



12. **Selection** – Fixed all previous command, after using the **P** command

## B) Improvements

1. **Speed**– Improved the operation speed for Copy, Move, Stretch and Erase.
2. **Image Label** – When the Callout is selected and moved, now the Image Label will move along with it and the Image Label can be moved separately

