



RGS REBAR

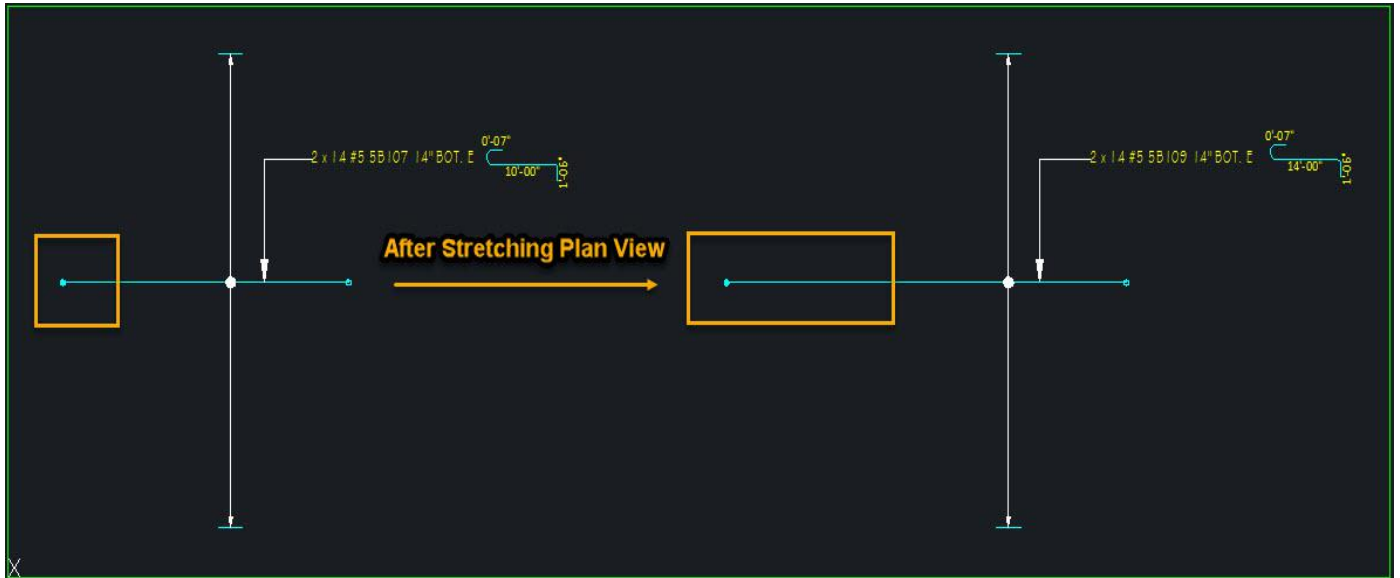
RGS Rebar Version 4.0.20
Compatible with ZW CAD

Release Notes

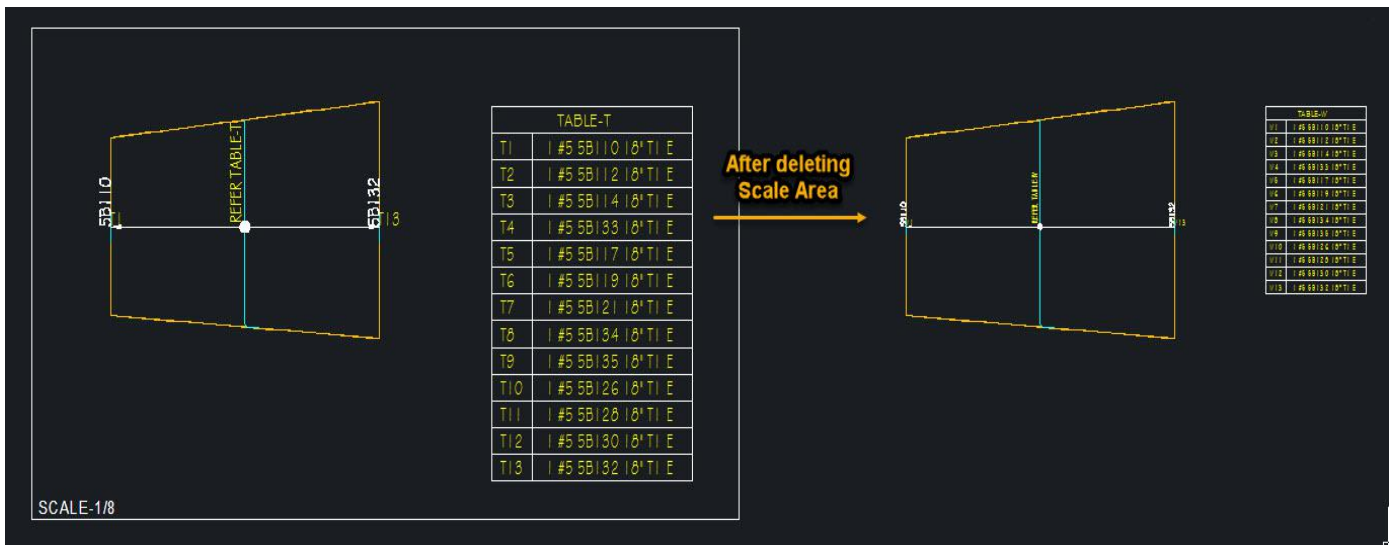
Date: 04-Feb-2020

A) Bug Fixed

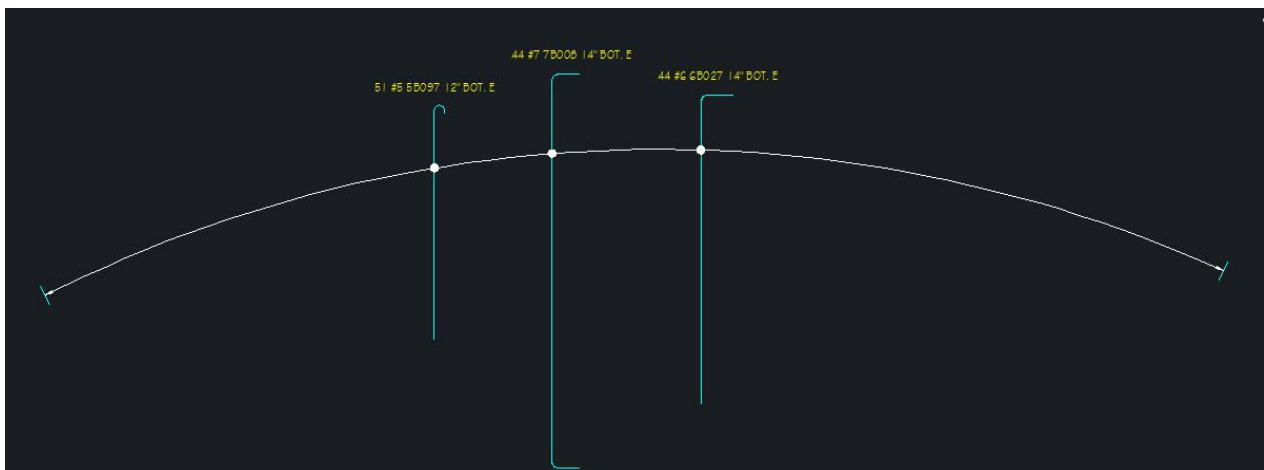
1. Rebar Stretch – Stretching other Rebar View is fixed



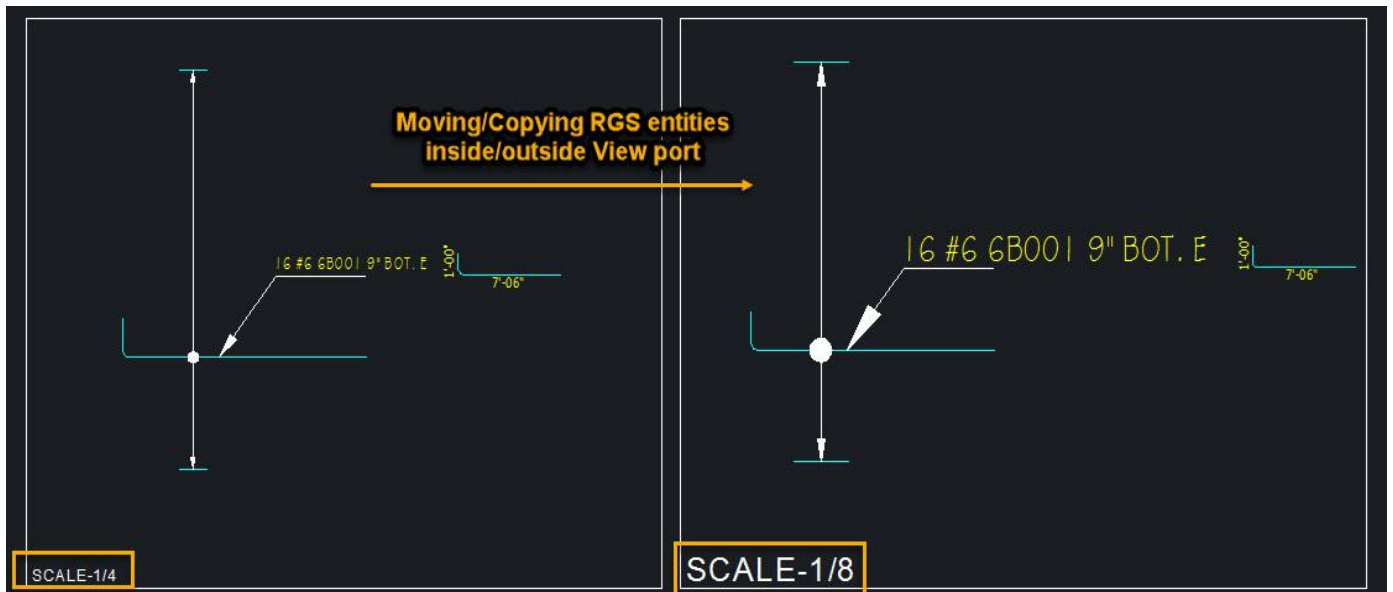
2. Collapsing Varying Bars Table – Fixed the collapsing Varying Bars Table while deleting View port



3. Circumferential Range – Fixed the error while drawing Circumferential Range



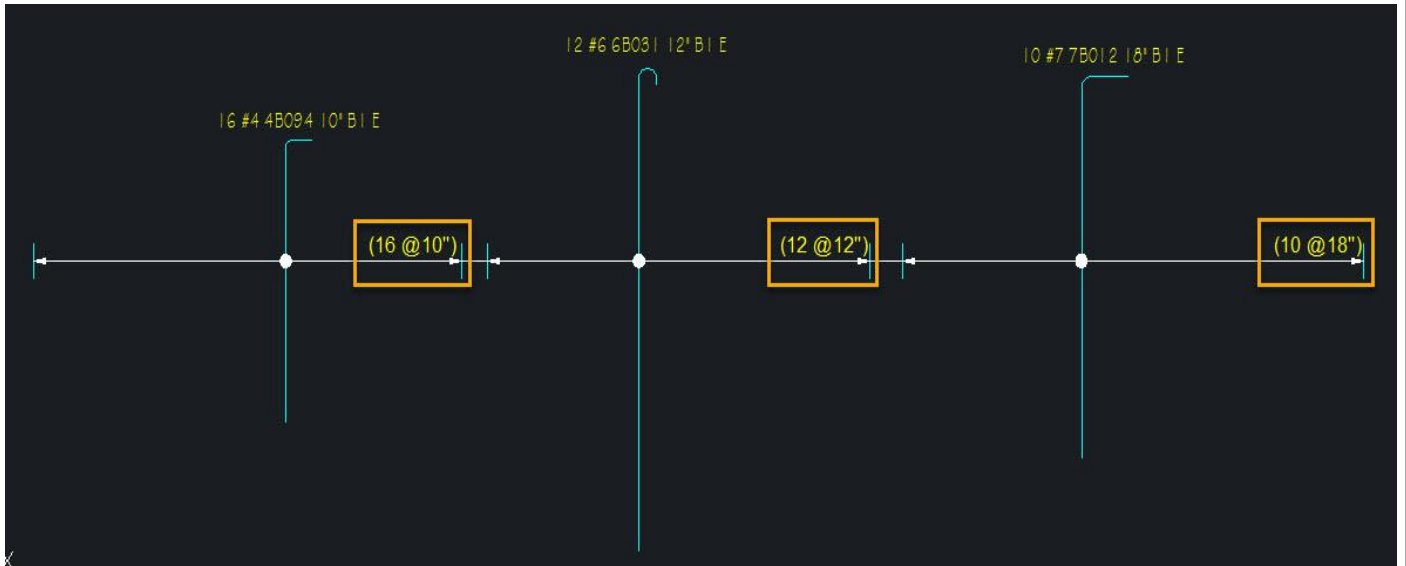
4. **Rebar Layer** – Fixed Bug of changing Rebar Colour after Copying Bars with different Layer properties
5. **Scale RGS Entities** – Issue of RGS entities not scaling inside/outside viewport has been fixed



6. **JP Dialogue Box and Title Block** – Fixed the bug of unclosed Job Properties dialogue box while placing Title Block
7. **Copying from one file to another** – Fixed the bug / time delay while copying drafting works / RGS entities from one file to another
8. **Option Terminate** – The option 'Add Bar View' not terminating issue has been resolved
9. **Default LISP** – Default LISP not loading issue is fixed
10. **Moving Tick and Tag** – Fixed the error while moving Bars with Tick and Tag
11. **Multi Range Callout** – Removed the additionally placing Multi Range callout when adding Multi Ranges to a Single / Alternate / Multi Bars

B) Improvements

1. **Range Text Alignment** – Fixed the Right Alignment of Range Text and also made the default Range Text Alignment as Right



2. **Precise Leg values** – ACI bend shapes are checked and corrected for increasing Leg values so that the Leg length can be more precise

Rebar Entry - (Rebar is Selected)

Drawing : RF01 Release No 1 Revision No : 0

Bid Item : Area / Pour : PHASE-01

Element Mark : New Element Mark

No of Places / Members : 1 No of Layer / Face : 1

Quantity : 10 Draw Range Draw Leader

Spacing : Inches Multiple Spacing Sample

Barsize : # 4 View SIDE Profile Mode

Bend Shape : 3 Bar Mark 4A06

Remarks : B EW Bar Location

CAD Layer : Default

Bar Defaults : Grade : A615-60 Coating : BLACK LE : None RE : None

Hide Picture Hide Dimension Undefined Special Bend

Bar & Callout Bar Only Callout Only Image Label

Bar Defaults Callout Format Update Bar Close

Picture View Selected View Side View

Outer-Outer Dimension

A	B	C	D	E	F
0'-060"	3'-000"	1'-030"	5'-000"	1'-030"	3'-000"
G	H	J	K	O	R
0'-060"	0'-110"	0'-040"	0'-101"	12'-082"	0'-000"

Total Length: Theoretical = 14'-060" Cut = 14'-043"

Cut Length Formula: $A+B+C+D+E+F+G+(2*PD+2*C)$

LAP No of Laps : 0 Length: 0'-000" Clear Legs

Other Dimensions

V1	V2	V3	V4	V5
0'-101"	0'-000"	0'-000"	0'-000"	0'-000"