



RGS Rebar Version 4.0.20
Compatible with ZW CAD

Release Notes
Date: 03-Mar-2020

A) Bug Fixed

1. **Weight Report for Control code** – Fixed the issue of not able to place drawing weight report based on control code

Weight based on : Theoretical Length Cut Length

			Black Bars		Coated Bars		
Color	Control Code	Description	Weight(in lbs)	Weight(in Tons)	Weight(in lbs)	Weight(in Tons)	F
Color 224	S40	TEST	4948	2.47	0	0	
Color 11	S50	TEST	3011	1.51	0	0	
Color 84	S30	TEST	3810	1.91	0	0	
Color 52	S20	TEST	3320	1.66	0	0	

Total Weight (in lbs) Black Bars: 15089 Coated Bars: 0 Total: 15089
Total Weight (in Tons) : Black Bars: 7.54 Coated Bars: 0 Total: 7.54

Place Weight for

2. **New Range Length Input** – Fixed the inconvenience while feeding the input in 'New Range Length' input box in ACI 315_99

Length Properties

Quantity: 12
Spacing: 12 Inches
Range Length: 11'-010" Ft-In
New Range Length: 12'-00" Ft-In
True Length: Ft-In
Start Elevation: Feet
End Elevation: Feet
Range Angle: Pick...

Bar Indicator

All
 First & Last Bar
 Center Bar
 First, Centre & Last Bar
 By BarNo
 Custom Location

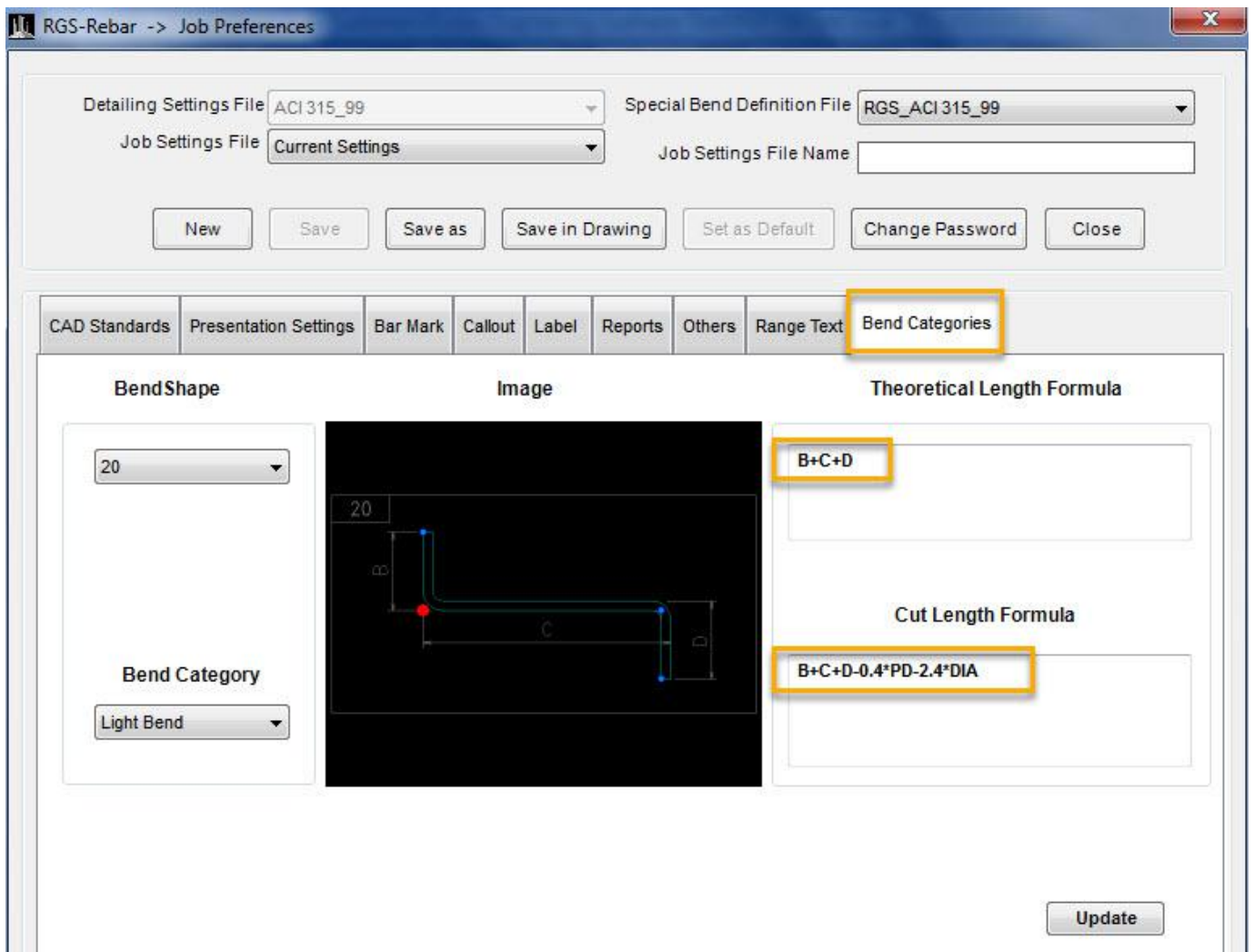
First Bar Location: Start Range
Last Bar Location: End Range

Sloped Range - Show for
 True Length
 Projected Length

Stagger Bars
By Length: 0 Inches Offset by: 0 Inches

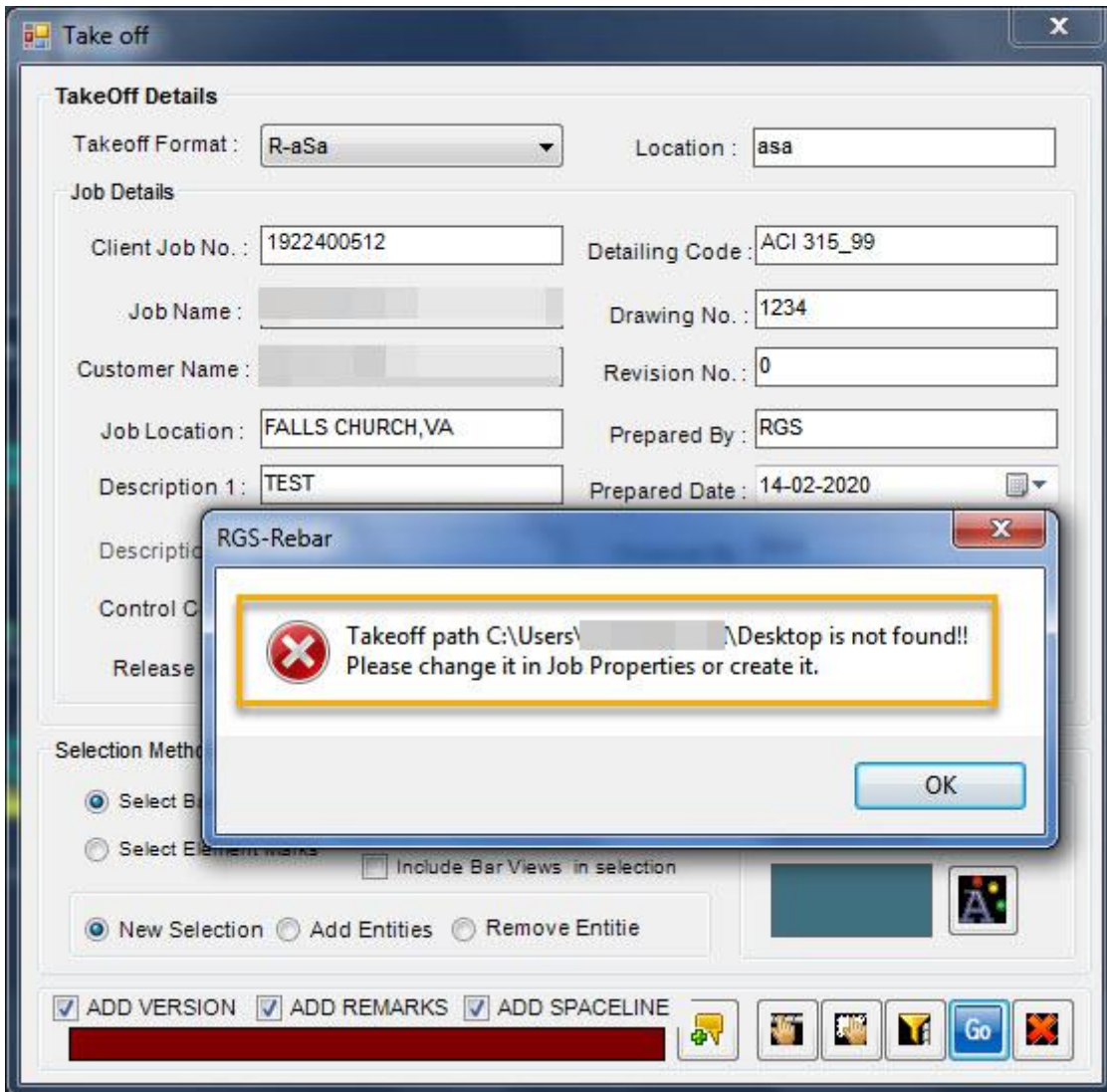
Modify Length at
 Start point End Point Both

3. **Bend Shape Formula** – Theoretical and Cut length values not calculating as per formula edited in job preference issue has been resolved and the edited formula can be saved as new Job Settings file for future use



4. **Layout Scale area** – Fixed the bugs while re-sizing and moving scale area in Layouts
5. **Multi Range move Issue** – Fixed the bugs occurring while moving Multi range views
6. **Dimension line explode** – Dimension line not exploding when using 'Explode' command issue is fixed
7. **Moving PDF underlay** – Imported PDF not moving when using 'Move' command issue has been resolved

8. **Takeoff path** – Resolved the Takeoff path error while taking bar list in a file which is detailed in another computer



B) New Feature

1. BBS Sorting – Added ascending / descending options in Sort order for BBS Reports

The screenshot shows the 'Report Sorting Order' dialog box in the software. The 'Sorting Order' section has the 'Ascending' radio button selected. The 'Selected Fields' list contains 'Bar Mark(ASCENDING)' and 'BAR SIZE(DESCENDING)'. The 'Available Fields' list includes 'TOTAL QTY.', 'TOTAL LENGTH', 'BEND TYPE', 'A', 'B', 'C', 'D', 'E', 'F/R', and 'G'. The background window shows the 'Report Details' section with a 'Report Format' dropdown set to 'Format 1_Bend bars and Straight bars' and a 'Report for' section with 'Bend Bars & Straight Bars' selected. A table is visible in the background with columns labeled Field5 through Field9.

	Field5	Field6	Field7	Field8	Field9	Field10
mark	Bend type	A	B	C	D	E
r	Center	Center	Center	Center	Center	Cer
ark	Bend Type	A	B	C	D	E
r	Center	Center	Center	Center	Center	Cer
	0.4	0.6	0.6	0.6	0.6	0.6
	No	No	No	No	No	No
	No	No	No	No	No	No
	No	No	No	No	No	No
	No	No	No	No	No	No