



RGS REBAR

Version 4.0.20.20

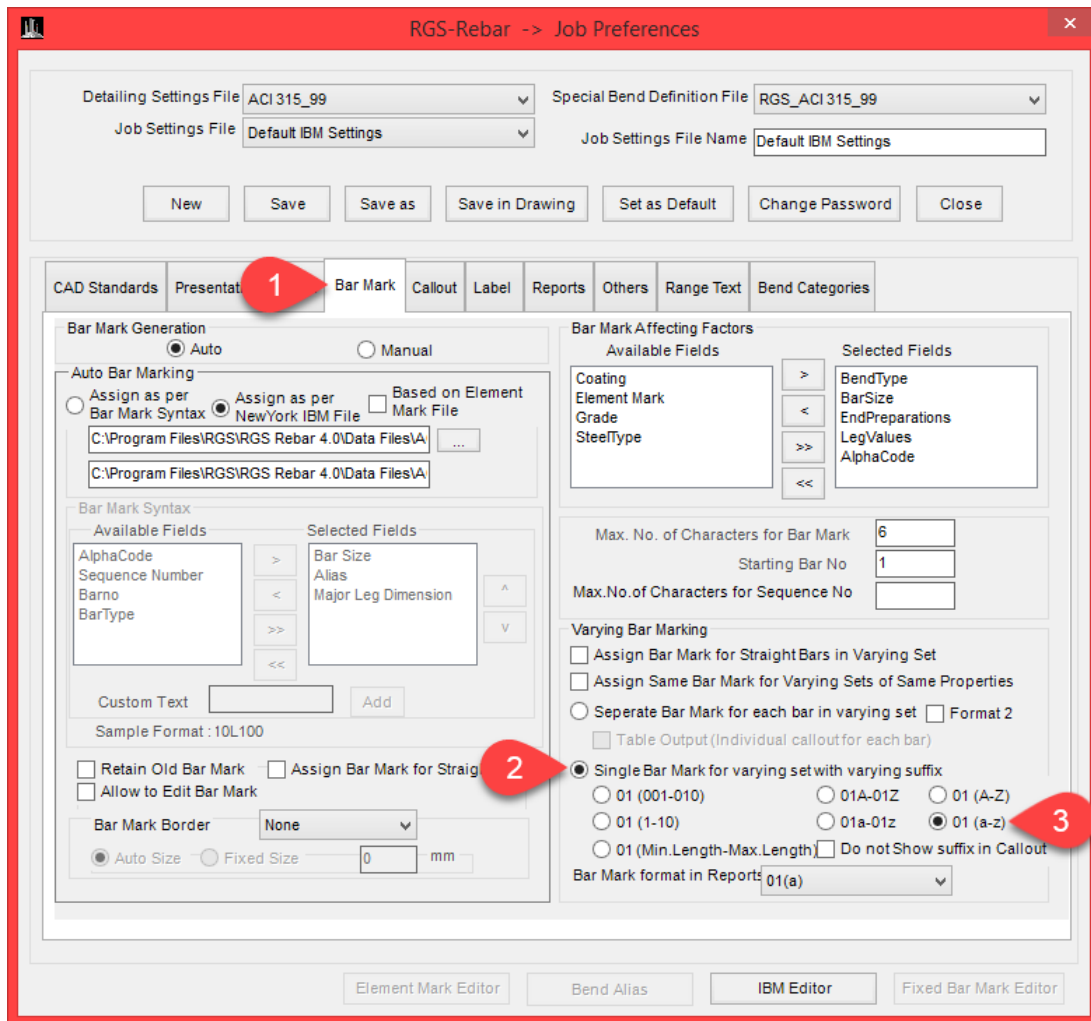
Release Date – 07 Feb 2023

Release Note 07 Feb 2023

Features and Improvements:

RRCP - 887 Varying bar method option now available in Intelligent Bark Marking code.

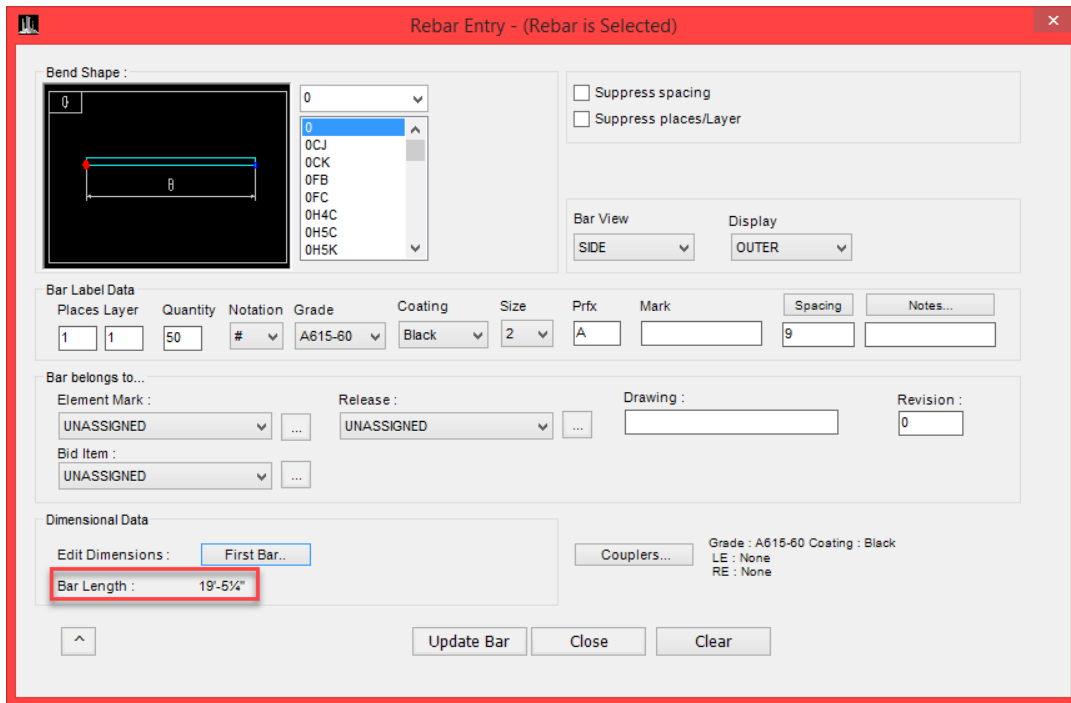
RGS Rebar -> Settings -> Job preferences -> Bar mark



RRCP - 806 The options in the New range screen have a preset drawing sequence for all the options and it is as follows:

- Step 1: Draw the Bars with necessary Bar properties.
- Step 2: Enter the value of spacing.
- Step 3: Draw the Range and cover values.
- Step 4: Place the callouts.

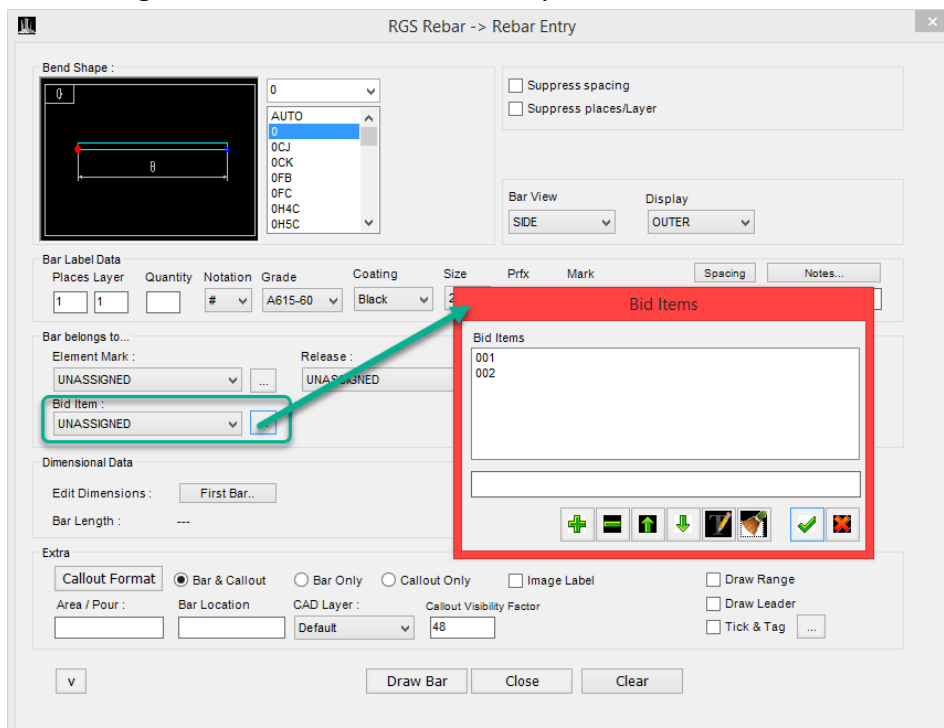
RRCP - 905 The Total length format is revised to be shown as feet'-inches''.



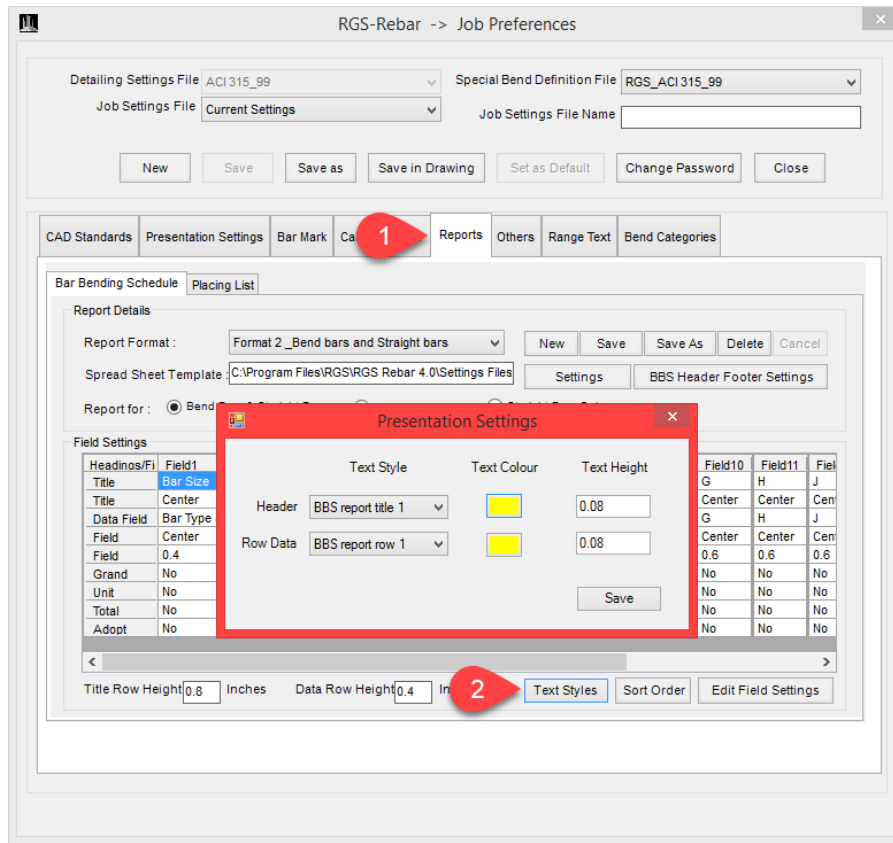
RRCP - 908 The Cover Option For Dummy Range Was Added. While, drawing the Dummy Range, Add values of Start Cover Distance And End Cover Distance.

```
Command: DUMMYRANGE
Get range start point:
Enter start cover distance : <0>:
Get range end point:
Enter end cover distance : <0>:
Get donut point:
Command:
```

RRCP - 880 Bid Items settings was added in the Rebar entry screen.



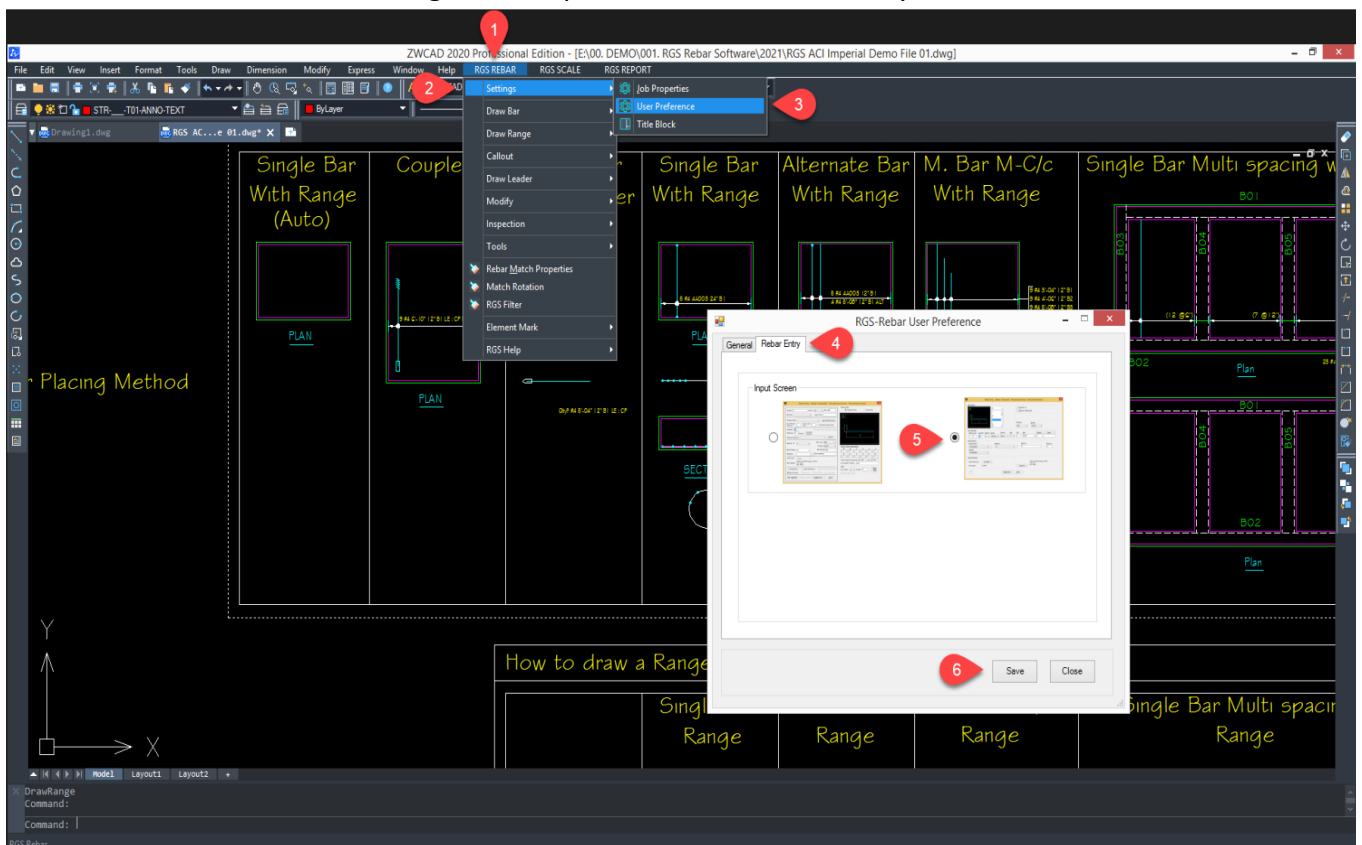
RRCP - 917 Options to edit the BBS Text styles, Text colour and Text Height were added.
 RGS Rebar -> Settings -> Job preferences -> Reports.



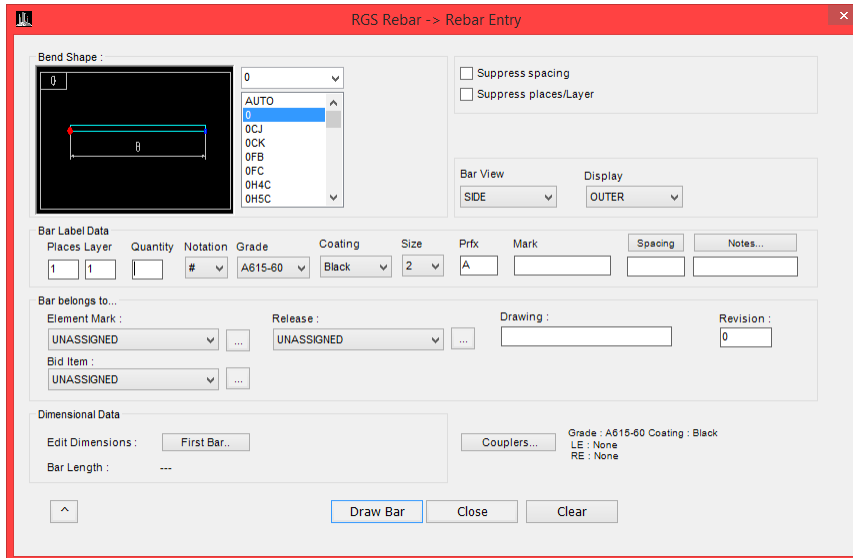
RRCP - 787 New type of Screens Were Added for The Rebar Entry Screen And The New Range Screen.
 The Images In The New Range screen Are Also Customisable.

To activate the new screens:

RGS Rebar -> Settings -> User preferences -> Rebar entry.



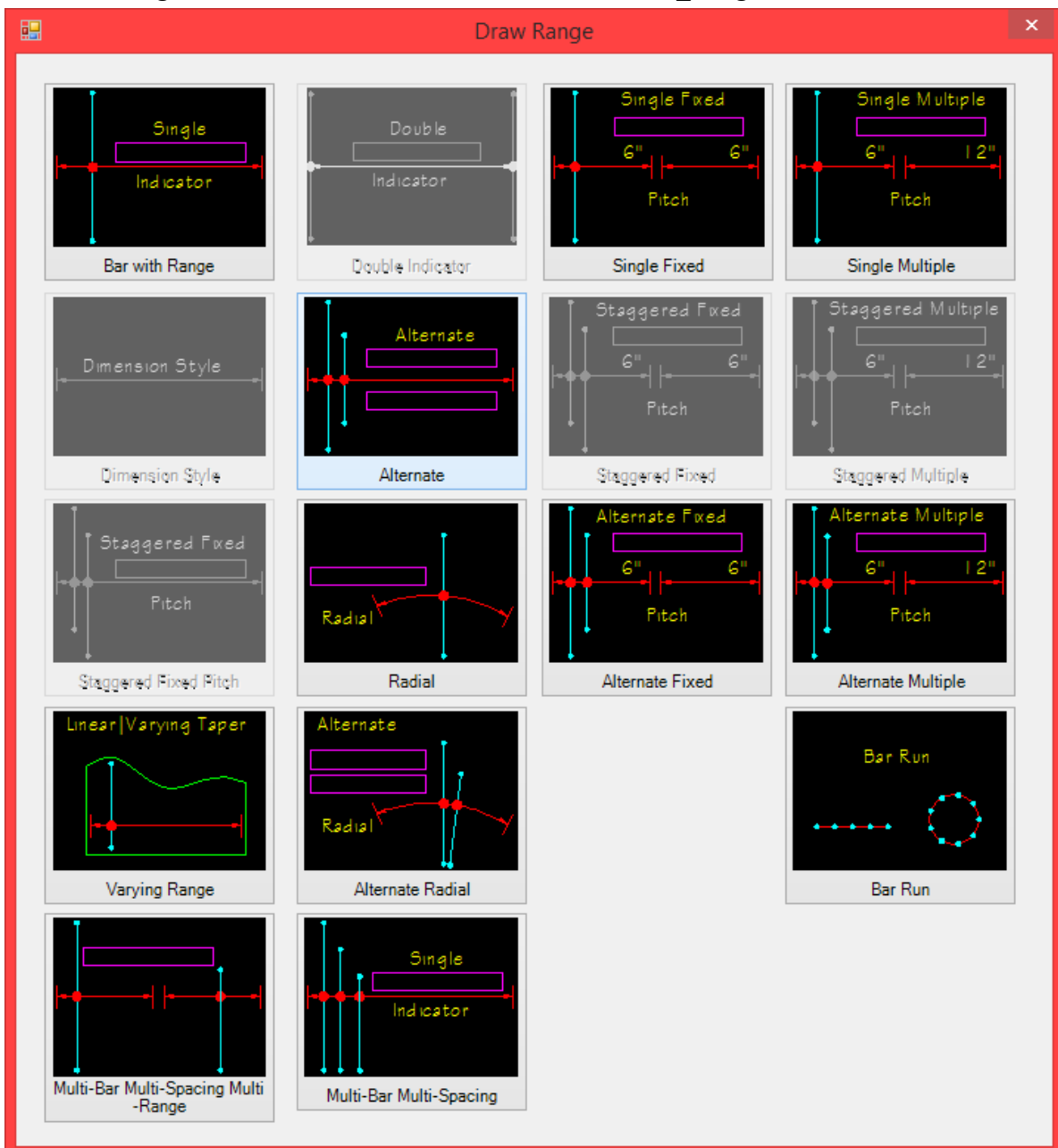
New Rebar entry screen:



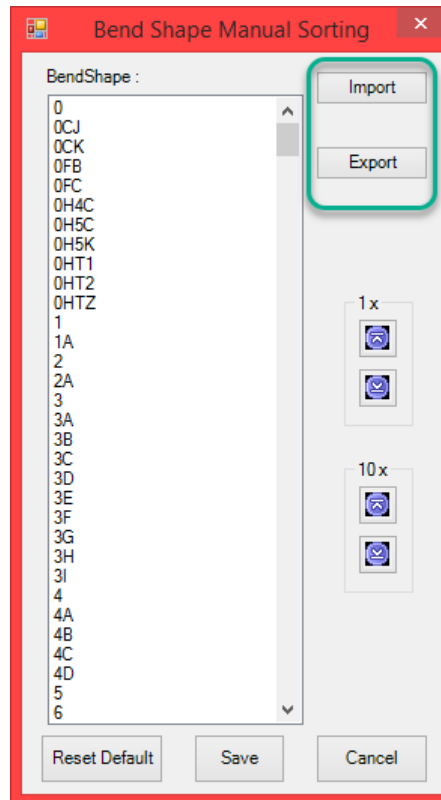
New range screen:

These images in the options can be customised on the path:

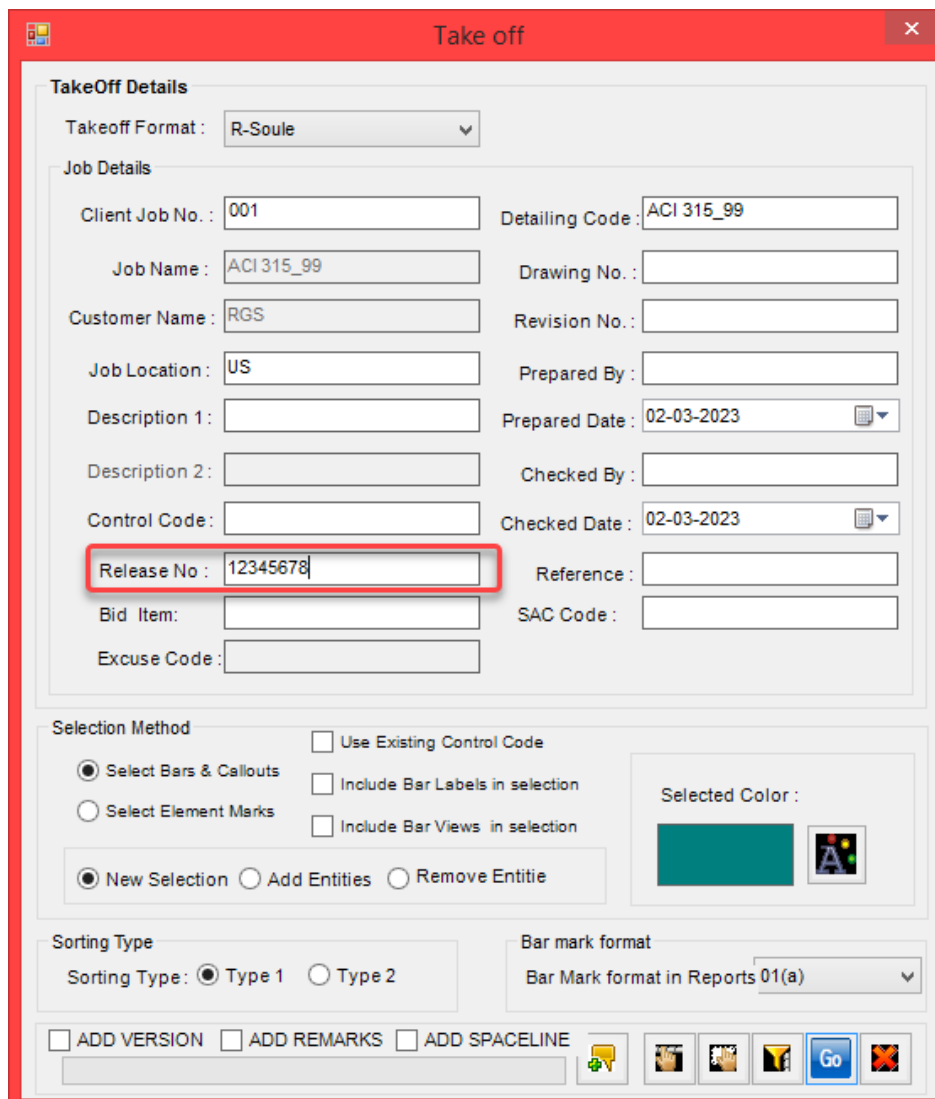
- ❖ C:\Program Files\RGS\RGS Rebar 4.0\FORMS\Draw_Range



RRCP - 794 An option to Import And Export In Bend Shape Manual Sorting.

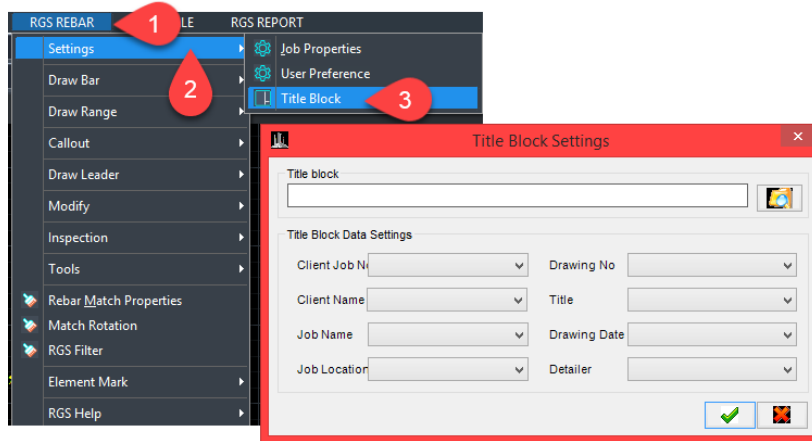


RRCP - 552 The Character Limit For Release No: in Soule Take-off was increased.

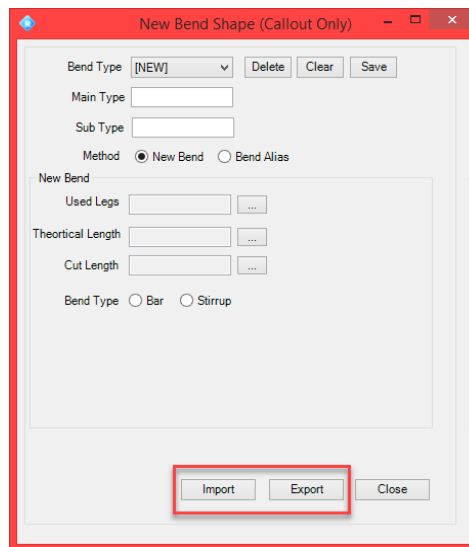


RRCP - 884 Title Block Was added Under the Settings Menu In Rgs Rebar.

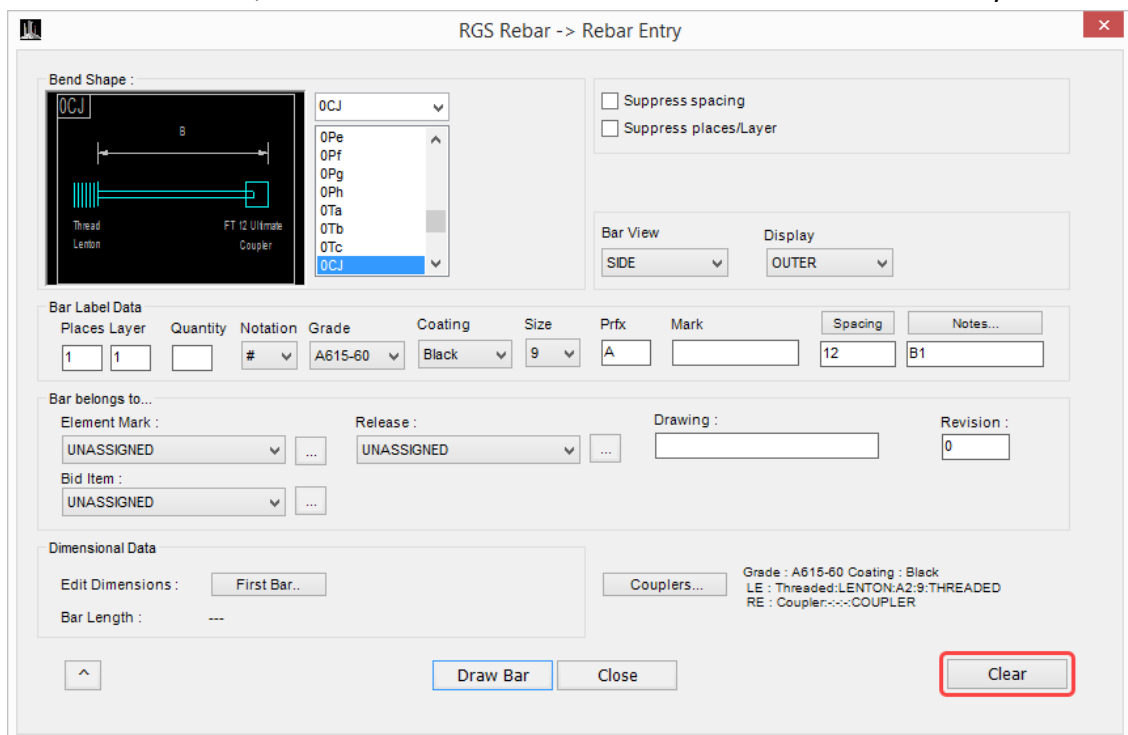
RGS Rebar -> Settings -> Title block.



RRCP – 788: An Option to Import And Export Button In Calloutbendtypes:

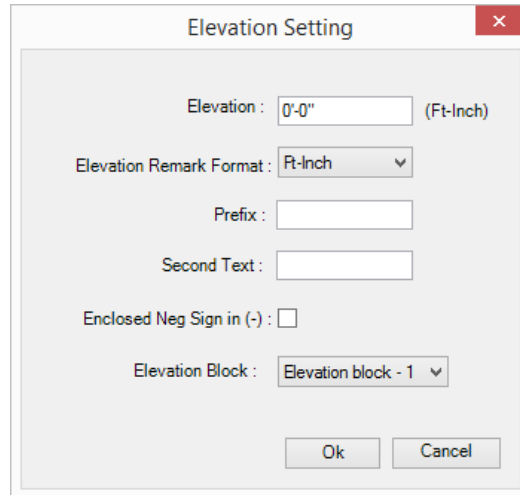


RRCP – 899: Clear button to clear, All The Last Drawn Bar Data Stored In The New Bar Entry Box.



RRCP – 845: An option to Show Elevation In Decimal Feet was added.

Negative Elevation will be shown In Brackets



Bugs:

RRCP - 704 The issue with the range donut being copied twice in the copied range has now been resolved. This means that the problem has been fixed and the range donut should no longer be copied twice in the copied range.

RRCP - 732 The issue with the unnecessary "*H" in the description has now been resolved. This means that the problem has been fixed and the "*H" should no longer appear in the description.

RRCP - 731 The issue with the leg values intersecting with the dimension arrows in the Metric Report-2 format has now been resolved. This means that the problem has been fixed and the leg values should no longer intersect with the dimension arrows in the Metric Report-2 format.

RRCP - 725 The issue with the RGS filter option where all the different grade bars would be highlighted when a grade was selected, and the escape command not unselecting the selected items, has now been resolved. This means that the problem has been fixed and the RGS filter option should now function as expected, highlighting only the desired grade bars, and allowing the selected items to be unselected using the escape command.

RRCP - 699 The issue with the title of other bar bending schedules (BBS) being disturbed when relocating one BBS created using the height method has been resolved. The titles of the unaffected BBS should now remain in place when any one BBS is relocated.

RRCP - 686 An issue with the Bar Mark suffix (A) not being displayed at the starting and end of a varying range has been fixed. The Bar Mark suffix should now be displayed in the correct location within the range.

RRCP - 688 An issue with the range end blocks appearing in layers when using multiple ranges has been resolved. The range end blocks should now be displayed in the correct Layer.

RRCP - 683 An issue with the bend type "O" not being an option in the place bend shape has been resolved. The bend type "O" should now be available as an option for placement.

RRCP - 681 An issue with the BBS (Bar Bending Schedule) split by height option not working has been resolved. The BBS should now be able to be split by height without any issues.

RRCP - 632 An issue with the callout format not changing when changing the 0-shape callout into a 17-shape has been resolved. The callout format should now change as desired when transforming the 0-shape callout into a 17-shape.

RRCP - 539 An issue with the changed view label not being in the correct layer while using the "Convert Set to View" option has been resolved. The changed view label should now be in the correct layer as desired.

RRCP - 726 An issue with the page number not appearing correctly based on the number of times a BBS (Bar Bending Schedule) was split has been resolved. The page number should now appear correctly based on the number of times the BBS is split.

RRCP - 691 There was a bug in the software when placing BBS, but this issue has now been resolved.

RRCP - 638 There was an issue with the Mirror command in the software where some callouts were not being changed when the command was used. This issue has now been resolved, and all callouts are correctly being changed when the Mirror command is used.

RRCP - 882 where the existing drawing numbers were not being displayed in the rebar entry screen after entering the drawing number in the title block screen. But this issue has now been resolved and the existing drawing numbers are now being shown correctly.

RRCP - 839 The issue with the bar view solid donut changing to an open donut during redraw has now been resolved. This means that the problem has been fixed and the bar view should no longer change from a solid donut to an open donut during redraw.

RRCP - 734 The issue of not receiving a prompt to update the BBS while saving the CAD file, even if changes have been made to the rebar properties, has now been resolved. This means that the problem has been fixed and you should now receive a prompt to update the BBS when saving the CAD file if changes have been made to the rebar properties.

RRCP - 733 The issue with the number of rows in each BBS changing and the row height being adjusted to compensate after updating the BBS has now been resolved. This means that the problem has been fixed and the number of rows in each BBS and the row height should no longer change after updating the BBS.

RRCP - 923 the issue with the dummy range being changed from layer to layer when copying from scale area to scale area has now been resolved. This means that the problem has been fixed and the dummy range should remain the same regardless of the layer it is copied to.

RRCP – 766 The issue of a warning showing up when stretching a varying bar boundary, even when there are no varying bars, has now been resolved. This means that the problem has been fixed and the warning should no longer appear when stretching the bar boundary.

RRCP – 692 The issue with the range text and callout text being in different text heights has now been resolved. This means that the problem has been fixed and the range text and callout text should now have the same text height.

RRCP – 687 The issue with the highlighting of all unassigned bars to a release number, even when the release number was not selected in the drawing audit, has now been resolved. This means that the problem has been fixed and only the bars that are assigned to the selected release number in the drawing audit will be highlighted in the future.

RRCP – 735 The issue with the row count of the BBS splitting multiple times and collapsing during the updating process has now been resolved. This means that the problem has been fixed and the row count of the BBS should no longer split or collapse during the updating process.

RRCP – 911 A. The BBS will now be struck out when changes are made to the bar properties. This means that the BBS will be marked as updated whenever changes are made to the bar properties, indicating that the information it contains has been altered - **Fixed.**

B. Only the affected BBS will now be updated and not all BBS. This means that when changes are made to bar properties, only the BBS that is impacted by those changes will be updated and struck out, instead of updating all BBS - **Fixed.**

RRCP – 901 The bend shapes will now be placed in a sequence order. This means that the bend shapes will be arranged in a specific order based on your requirements - **Fixed.**

RRCP – 897 There was a problem with the viewing of bend shapes in the BBS, where some lines and profile portions were missing- **Fixed.**

RRCP – 907 An issue has arisen in the process of converting the view to a set option- **Fixed.**