



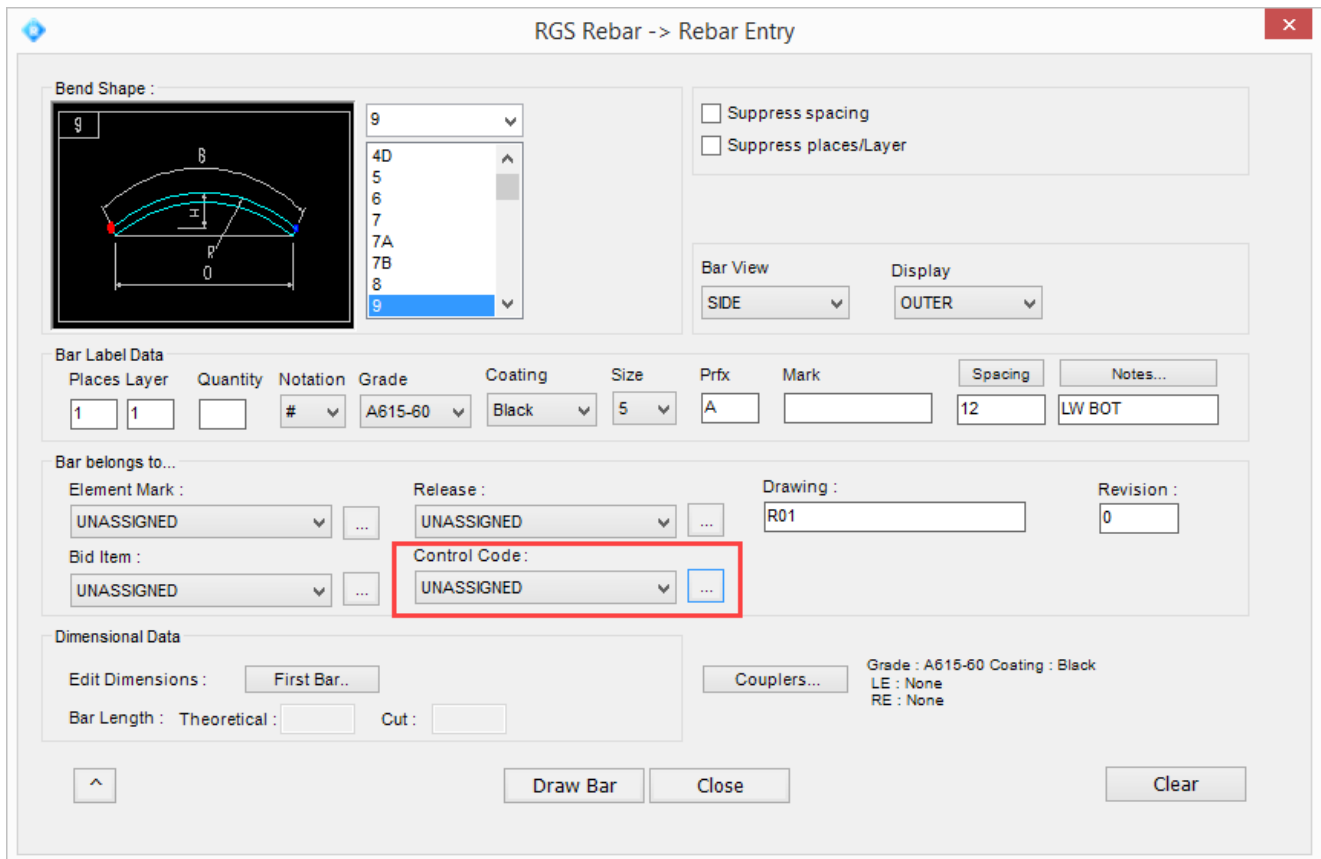
RGS REBAR

Version 4.0.20.20

Release Date – 19 May 2023

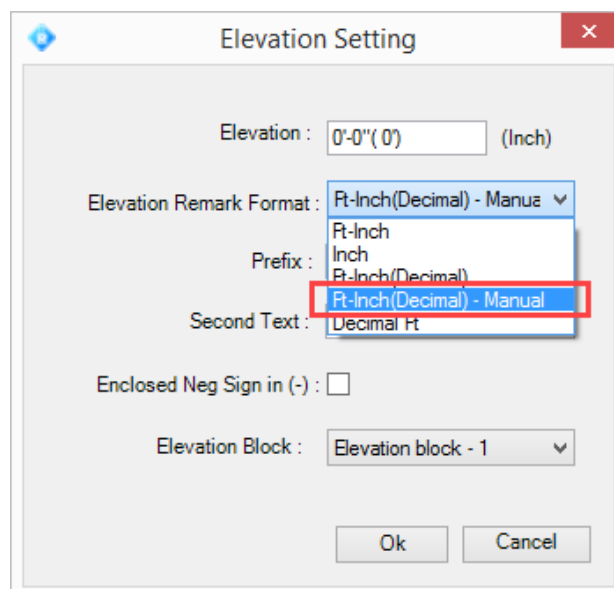
New Feature:

RRCP-36 QG2-1346 An option to add control codes has been added to the rebar entry screen.



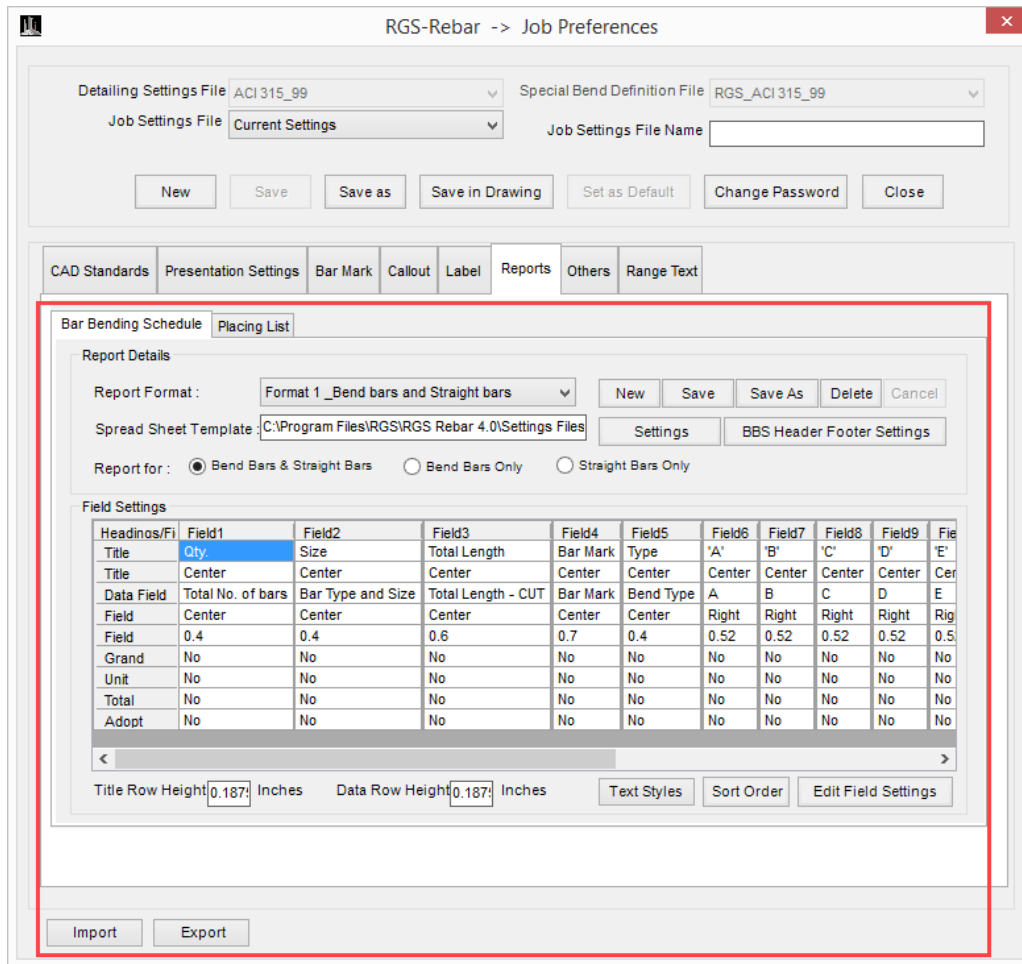
The screenshot shows the 'RGS Rebar -> Rebar Entry' dialog box. The 'Bend Shape' section includes a diagram of a rebar bend and a list of bend shapes (9, 4D, 5, 6, 7, 7A, 7B, 8, 9). The 'Bar Label Data' section contains fields for Places Layer (1), Quantity (1), Notation (#), Grade (A615-60), Coating (Black), Size (5), Prfx (A), Mark, Spacing (12), and Notes... (LW BOT). The 'Bar belongs to...' section includes Element Mark (UNASSIGNED), Release (UNASSIGNED), Drawing (R01), and Revision (0). The 'Bid Item' section includes Bid Item (UNASSIGNED) and Control Code (UNASSIGNED), which is highlighted with a red box. The 'Dimensional Data' section includes Edit Dimensions (First Bar...), Couplers..., and Bar Length (Theoretical and Cut). The 'Grade : A615-60 Coating : Black' and 'LE : None RE : None' are also visible. Buttons for Draw Bar, Close, and Clear are at the bottom.

RRCP-996 QG2-1364 The elevation settings now provided the option to include feet-inches with manual entry decimal values.

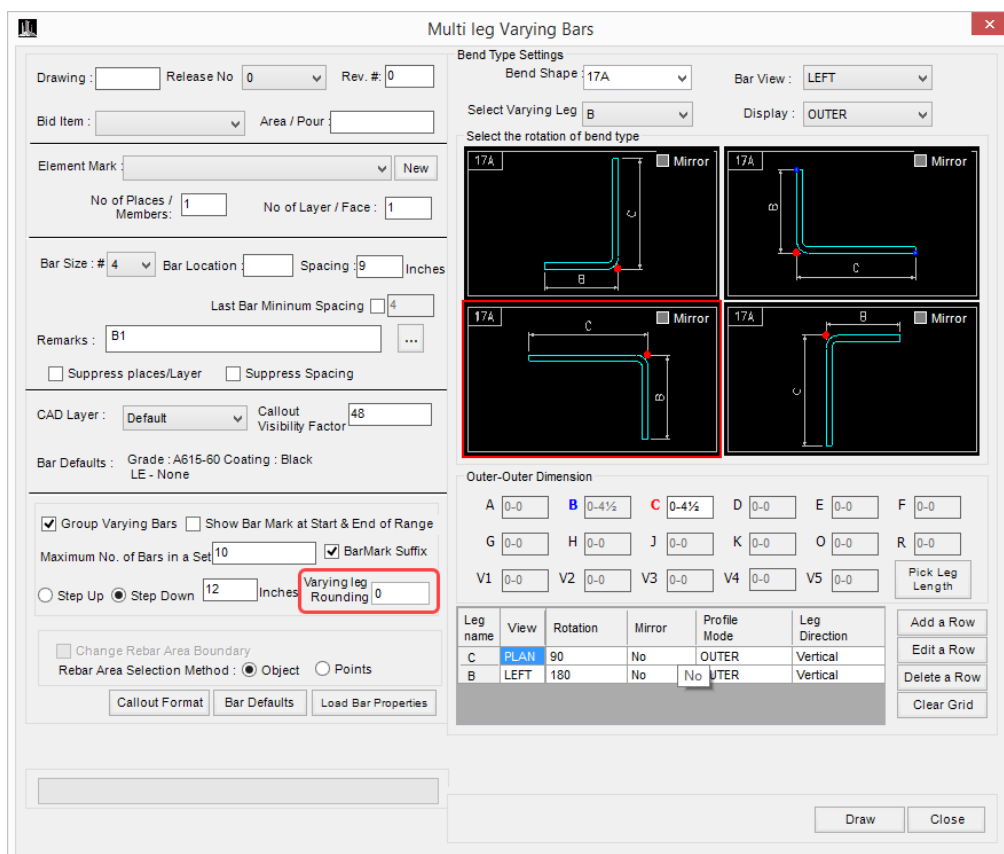


The screenshot shows the 'Elevation Setting' dialog box. The 'Elevation' field is set to '0'-0"(0) (Inch)'. The 'Elevation Remark Format' dropdown menu is open, showing options: Ft-Inch, Inch, Ft-Inch(Decimal), Ft-Inch(Decimal) - Manual (highlighted with a red box), and Decimal Ft. The 'Prefix' field is set to 'Ft-Inch(Decimal)'. The 'Second Text' field is set to 'Decimal Ft'. The 'Enclosed Neg Sign in (-)' checkbox is unchecked. The 'Elevation Block' dropdown menu is set to 'Elevation block - 1'. Buttons for Ok and Cancel are at the bottom.

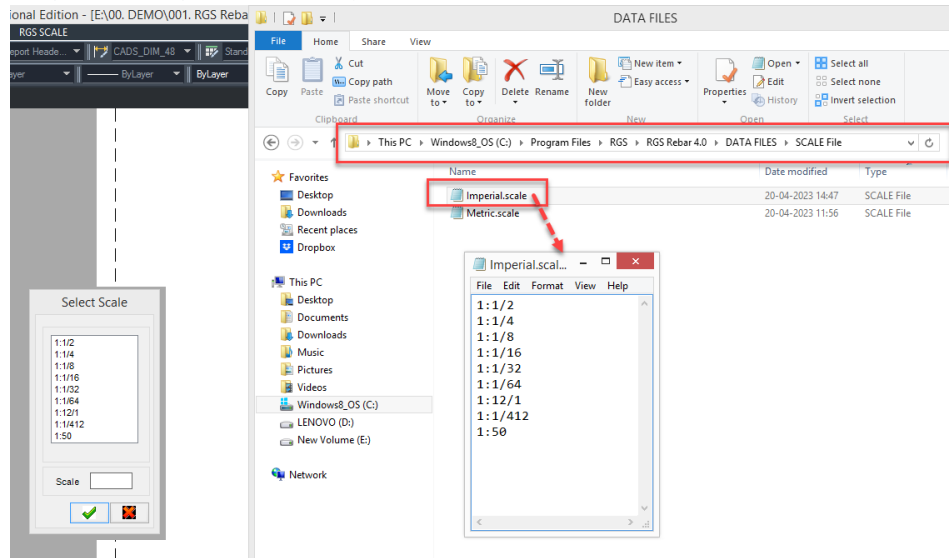
RRCP-1088 QG2-1451 The Job Preference settings now include the ability to import and export report templates.



RRCP-1049 QG2 - 1305 A new feature has been added that allows for length rounding of varying bars.

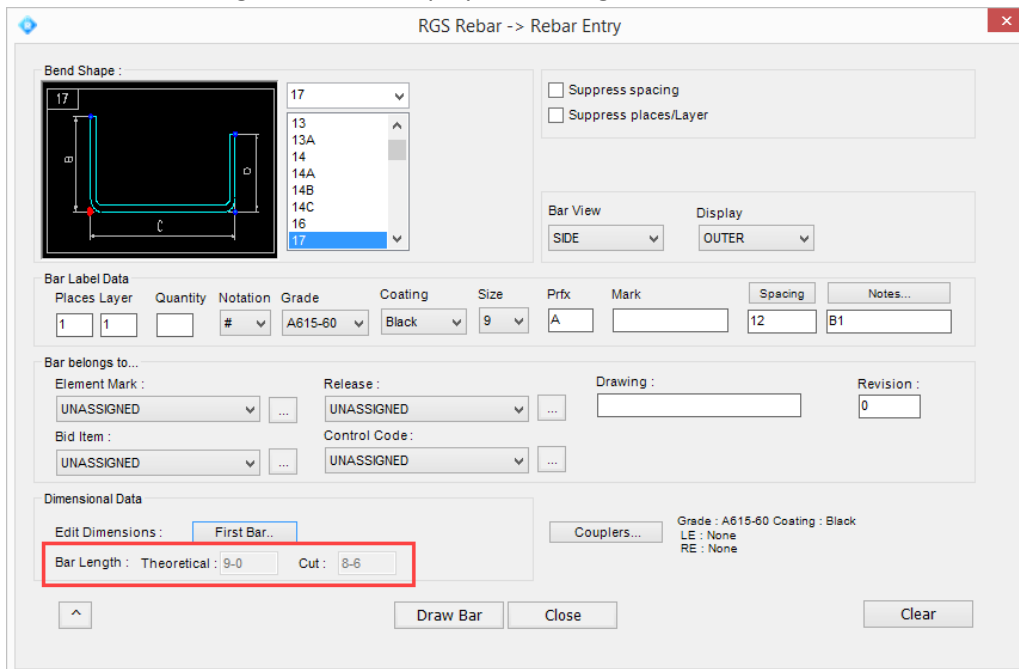


RRCP-1058 QG2-1330 Creating a new scale value other than standard value in the layout and having it automatically saved for the current CAD file and it will be stored in C drive (The path location in the refer image) So, no need to type again and again in each layout to create same scale.

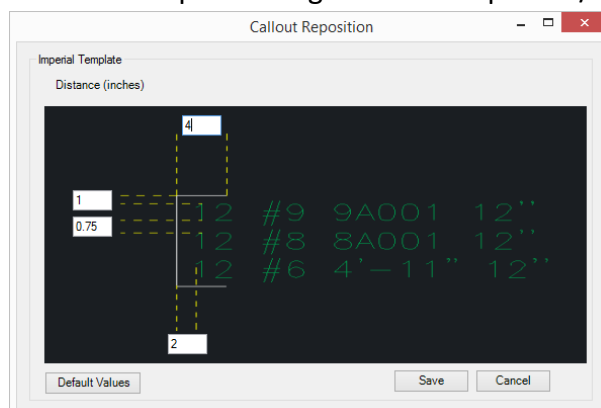


Improvement

RRCP-1098 Theoretical and cut length values of displayed bar lengths are now visible in the rebar entry screen.

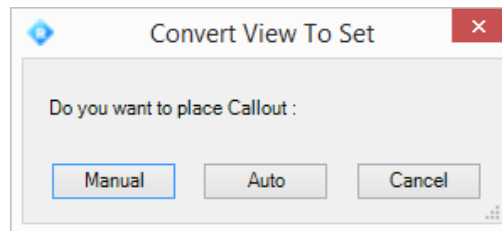


RRCP-1009 The setting screen for callout repositioning has been improved/refined.



RRCP-1061 QG2-1328 A solution for rounding up bar quantities for old ranges is now available, which can be implemented using the "Quantity rounding" command. This solution can be applied across all ranges.

RRCP-1071 QG2-1397 An improved "view to set" option that provides users with more control when placing callouts. Specifically, users can now choose between **automatic** placement, which places the callout in a random location that must be manually adjusted, or **manual** placement, which allows users to pick the exact point for the callout to be placed.



RRCP-1073 QG2-1390 A capability to swap bar marks even when there are other entities included in the bar mark syntax.

RRCP-1082 QG2-1463 A possibility to export to a spreadsheet even when there are multiple grades in a single release.

RRCP-1053 QG2-1303 While doing export to spreadsheet in BBS, the total length of the bar is now included in Report field.

Bug

RRCP-1079 QG2-1339 When copying a bar view and using it as a bar set, the callout format was not correct and was only displaying in label format – The issue has been rectified.

RRCP-1091/1059 QG2-1492/1342 The bar size when detailing the Bend shape 9 (arc bar), where the rebar entry showed a size of #5, but the bar mark showed a size of #6. – The issue has been rectified.

RRCP-1092 QG2-1487 We used the callout reposition option and attempted to delete it, but when we cancelled the delete action, the callout reposition bracket vanished. – The issue has been rectified.

RRCP-1096 QG2-1498 The issue at hand appears to be that the quantity of rebar in a range is changing unexpectedly when the spacing of the rebar is altered. The current calculation shows a quantity of 669 bars instead of the expected 42 bars, despite the range length being 55'-7" and the spacing being 16" o.c. – The issue has been rectified.

RRCP-973 QG2-1476 The dimension text does not correlate correctly with the scale – The issue has been rectified.