



RGS REBAR

Version 4.0.20.20

Release Date – 01 Sep 2022

New Option

1. **RRCP-132** Rounding settings in the job setting file have been refined. **(Refer 15 Aug 2022 Release Note)**
2. **RRCP-133** An option to create dummy rebar donut **(Refer 28 July 2022 Release Note)**
3. **RRCP-134** A choice to Suppress the Spacing and Member/Layer
There is a checkbox labelled Suppress c/c and Member/Layer on the rebar entry form.
Example: The spacing and member/layers will be hidden if we choose this option and won't be seen in the callout. **(Refer 28 July 2020 Release Note)**
4. **RRCP-150** BS8666-2020 – New code added (Partially Completed)

Job Properties - BS 8666_2020 - Default Settings

Country : BRITISH

Detailing Code : BS 8666_2020

Job Preference : BS 8666_2020

Set As Default

Job Details

Job No : RGS-1036

Client Job No : V6-562

Client Name : RGS-CAD ENGG PVT LTD

Job Location : CHENNAI

Job Name : BS 8666_2020

Takeoff Folder : C:\Take off\BS 8666_2005

Title Block Settings Place Title Block

Scale Dimensions and Other Text's

Bid Items Job Preferences Bar Defaults OK Cancel

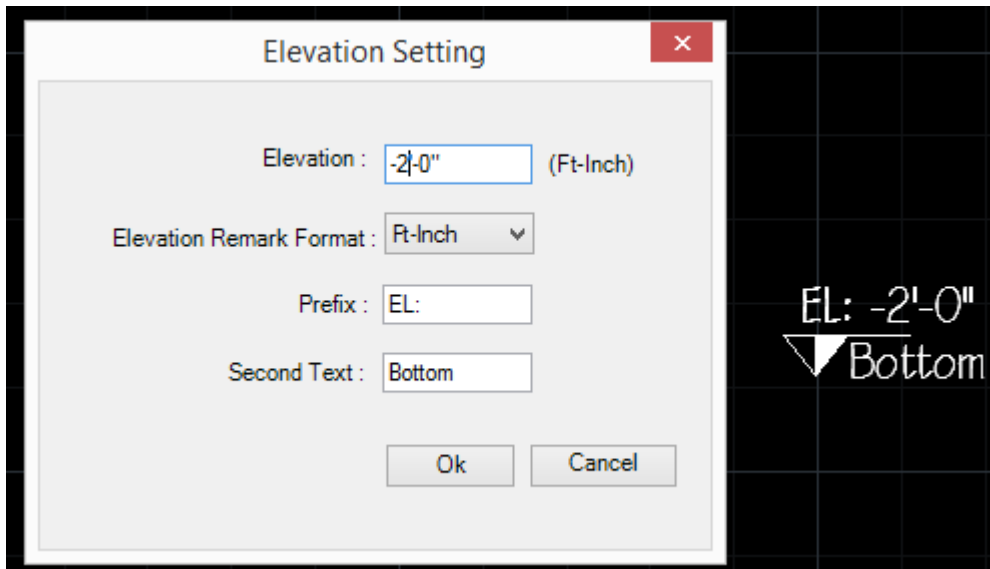
5. **RRCP-35** An option CONVERT VIEW TO SET.
 - a. RGS Rebar-> Draw Bar -> Convert view to set
6. **RRCP-108** Bar Bending Schedule data splitting based on remarks
Eg: 2x V102(Bar Mark) SW44 (Remark)
1xV102 (Bar Mark) SW43 (Remark)

Improvement

7. **RRCP-367** Speed Refinement Phase
 - a. Memory refinement
 - b. File to file copy
 - c. Copy/paste
 - d. Speed Refinement for all option (Eg. Place BBS, Audit, Match properties, Reassign Barmark Etc.)

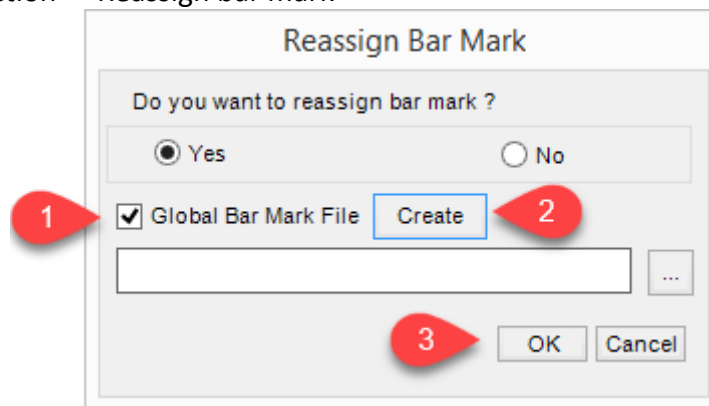
8. **RRCP-135** Place elevation refinement.

- a. RGS Rebar -> Tools -> Place elevation -> Base Elevation



9. **RRCP-137** An option to create global bar mark file.

- a. RGS Rebar -> Inspection -> Reassign bar mark



Bug

10. **RRCP-138** Export schedule in PDF format not working - **Fixed**

11. **RRCP-60** At certain times while using Match property command leg values are locked with selection mode & couldn't unselect it. - **Fixed**

12. **RRCP-56** While copy bars & labels get duplicate - **Fixed**

13. **RRCP-42** In the dialogue box for releasing orders. If we try to change the control code, we get a duplicate. - **Fixed**

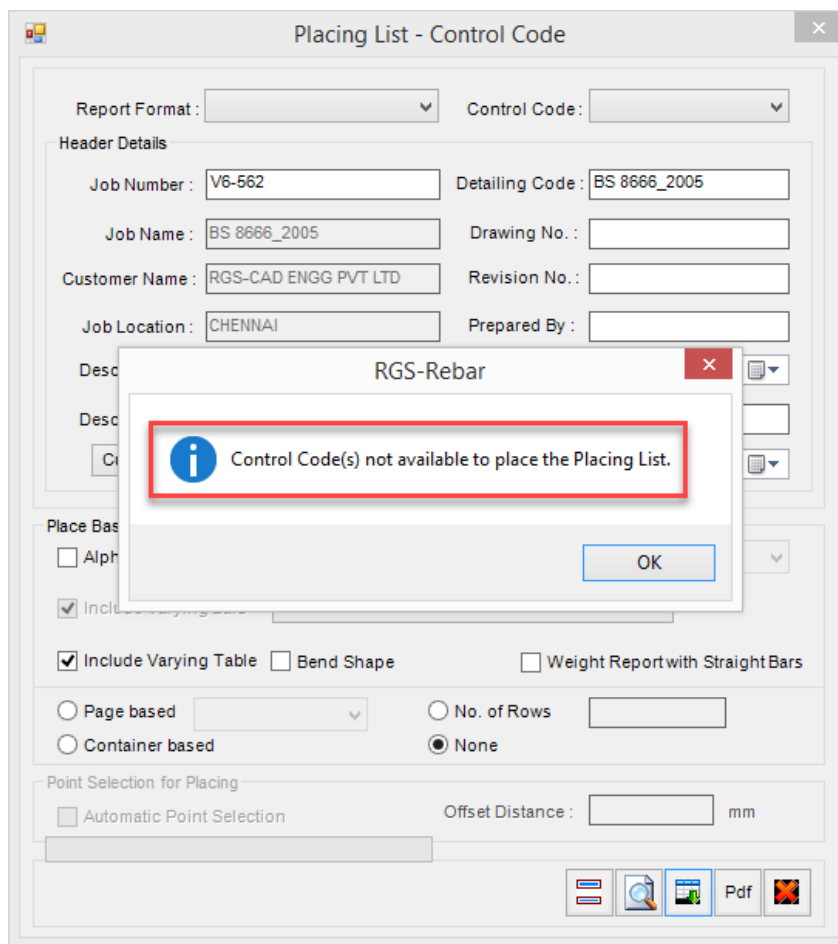
14. **RRCP-59** While using copy option (Ctrl+C), if we try to Paste it in one cad file to another cad file, Commands are not working. It Shows "Retry" error. - **Fixed**

15. **RRCP-151** Tick & Tag _Error - Bar Tick-Tag format not getting as per our UK detailing standard practice. - **Fixed**

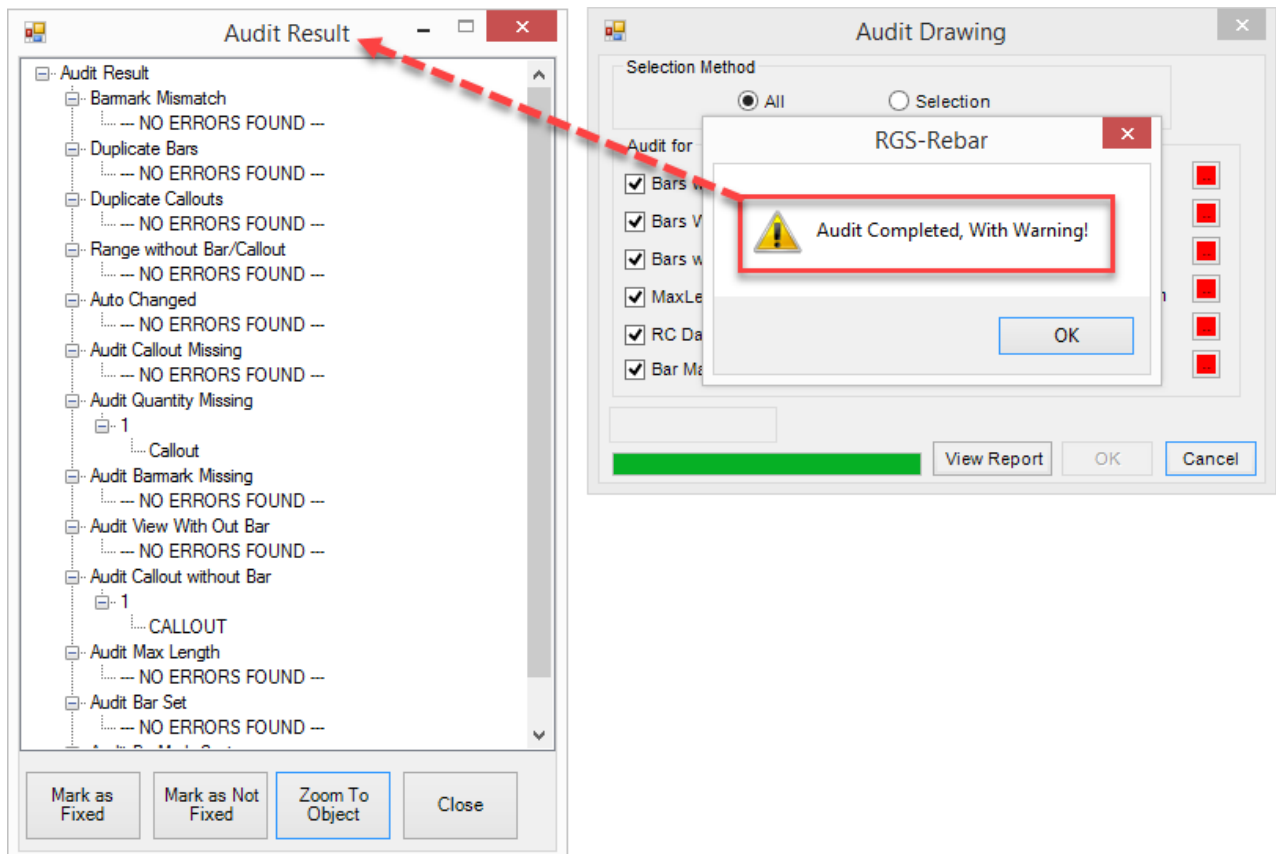
16. **RRCP-110** Cut bars to opening _Error - **Fixed**

17. **RRCP-111** Box BBS_ Error - **Fixed**

18. RRCP-112 Weight by control code Report _Error – Fixed



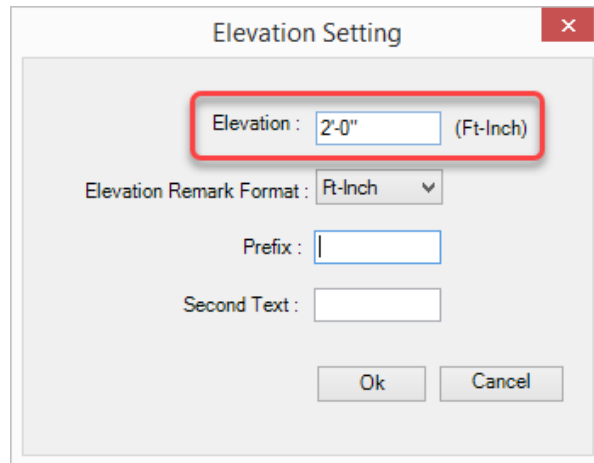
19. RRCP-115 Audit drawing _Error is showing in the list but message showing "No error found" – Fixed



20. RRCP-116 Detailers Library _Error - Fixed

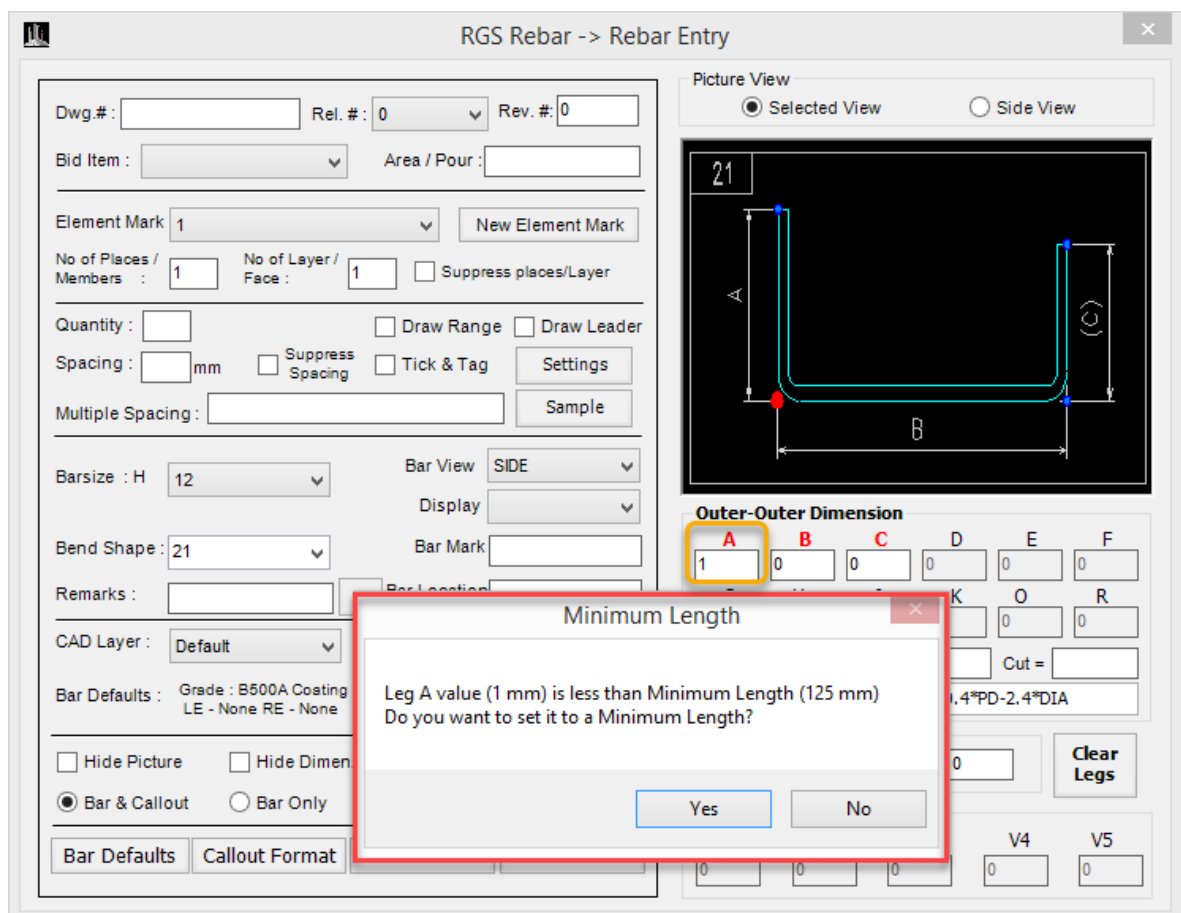
21. **RRCP-117** Conversion of Straight Bar (SC 00) to Crank Bar (SC26) - We are facing issues while clicking / converting straight bars (shape code 00) to Crank bar (shape code 26) in case of editing bars A, B, C, D values directly. – **Fixed**

22. **RRCP-178** The place elevation command only accepts values in inches; hence we are unable to specify the base elevation in feet and inches format– **Fixed**



23. **RRCP-139** Unable to draw Shape code 98 - **Fixed**

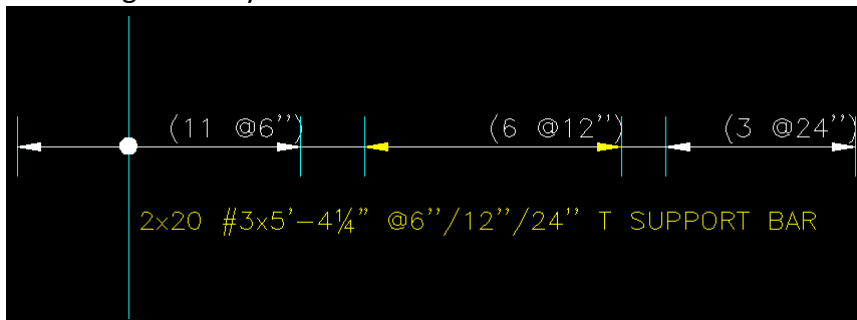
24. **RRCP-140** When we entered less than standard leg value, A minimum length validation warning showed up.



25. **RCCP - 141** Minimum leg Values changed in RGS Rebar job setting file as per Codes

BarSize	Value
8	115
10	120
12	125
14	125
16	130
18	150
20	190
22	200
25	240

26. **RRCP-101** While drawing a range using Multi range option, entered spacing is not showing in range text, but showing correctly in Callout. – **Fixed**



27. **RRCP-136** If we delete the bar call out in the multi range. Following that, it displays a separate bar callout created for each range – **Fixed**.