



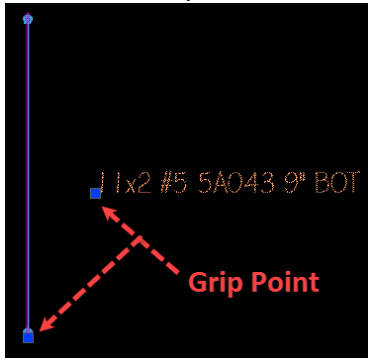
RGS REBAR

Version 4.0.20.20

Release Date – 16 Aug 2022

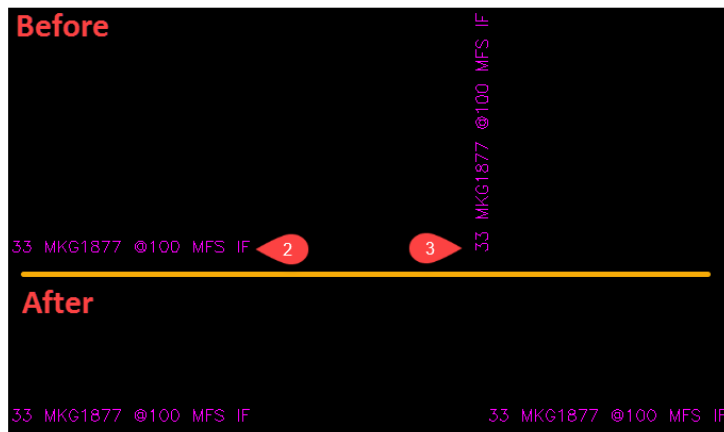
New Option

1. **RRCP-34** An option to move the rebar, callout and label using the grip point.



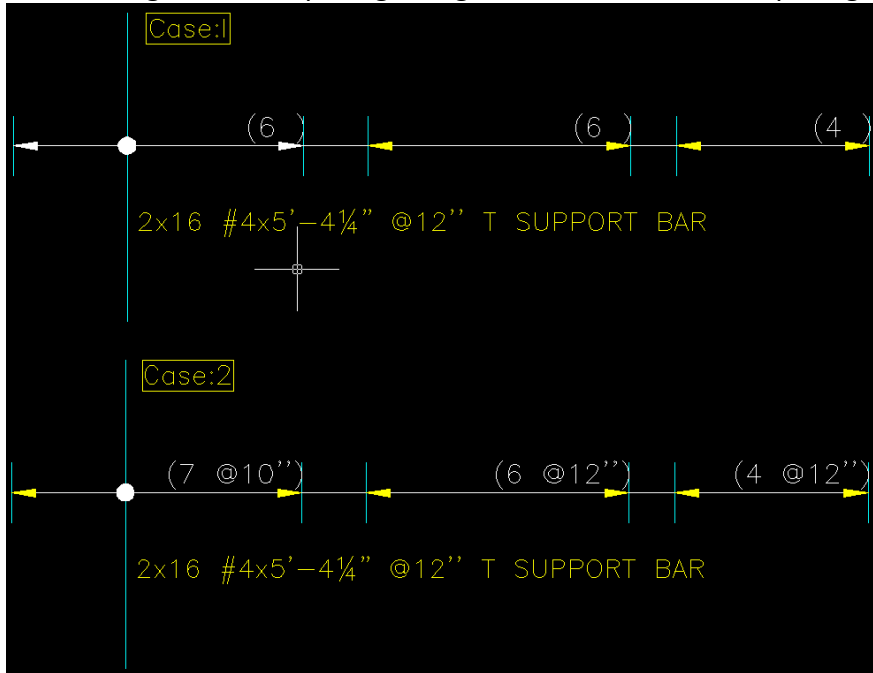
2. **RRCP-44** feature that allows you to filter the rebar attributes that are highlighted in the drawing area.
 - Step 1: Use the command RGSFilter. The RGS Filter form will appear (refer below image).
 - Step 2: Choose the rebar
 - Step 3: Check the box required information
 - Step 4: Click the filter button
 - Step 4: Choose the object to highlight using selection button.

3. **RRCP-47** The callout and label can be rotated using the "Matchrotation" option.
 - Step 1: Use the Command "MATCHROTATION"
 - Step 2: Select source callout/Label
 - Step 3: Select the callout to apply rotation



Improvement

4. **RRCP-43** In Multi range, the range text is formatted as follows.
 1. When the spacing is the same and the range text just displays the bar count.
 2. When using Different spacing, Range text will reflect both spacing and bar count.



5. **RRCP-30** In the output file for the bar list, the location has been eliminated.

```

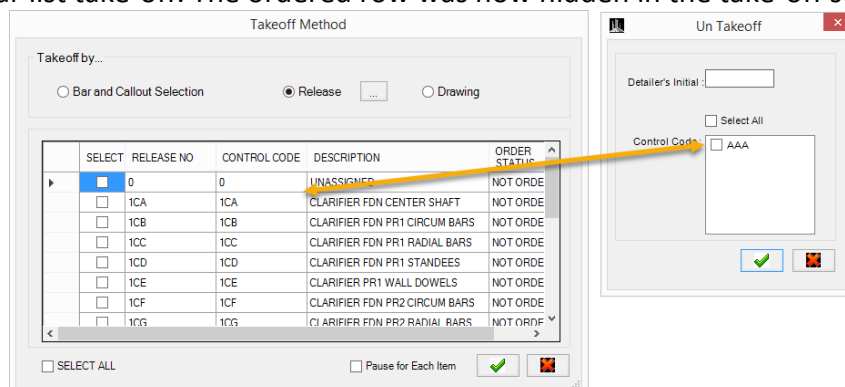
LAAAASA - Notepad
File Edit Format View Help
1A 2222610236KOKOSING INDUSTRIAL Western Hancock WWTP NIII
8
3A 22226102361 AAA dad 33423(2) dfa
3B 60 60 40000
6R 32 9 504
6R 17 10 504
6R 32 7 504
6R 17 8 504
6R 32 5 504
6R 17 6 504
6R 32 4 504
6R 17 3 504
8 WEIGHT : 2032
  
```

6. **RRCP-33** In the output file for the bar list, the multiplier has been eliminated for 1

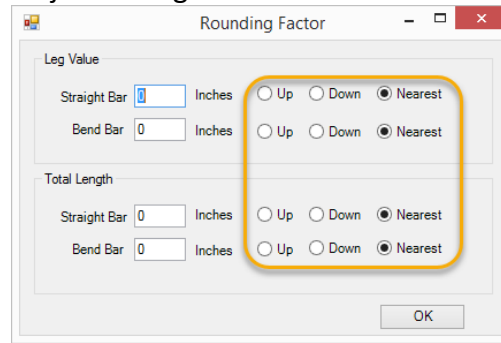
```

LAAAASA - Notepad
File Edit Format View Help
1A 2222610236KOKOSING INDUSTRIAL Western Hancock WWTP NIII
8
3A 22226102361 AAA dad 33423(2) dfa
3B 60 60 40000
6R 32 9 504
6R 17 10 504
6R 32 7 504
6R 17 8 504
6R 32 5 504
6R 17 6 504
6R 32 4 504
6R 17 3 504
8 WEIGHT : 2032
  
```

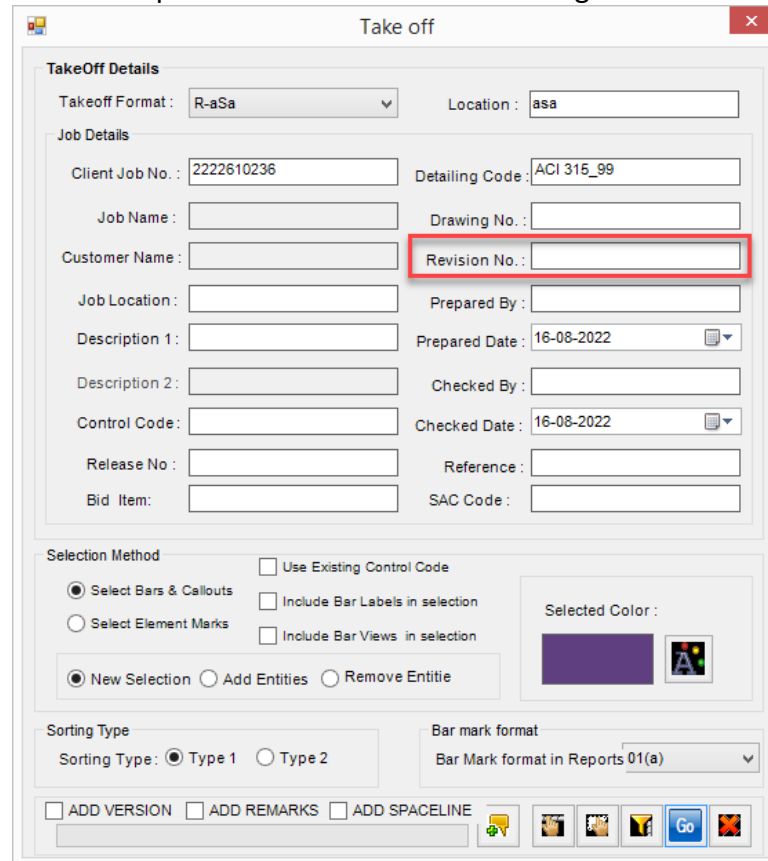
7. **RRCP-50** During Bar list take-off. The ordered row was now hidden in the take-off screen.



8. **RRCP-170** Rounding settings in the job setting file have been refined.



9. **RRCP-29** Revision number is an optional field in the take-off dialogue box.



Bug

10. **RRCP-46** The leg value was 30' in the Rebar entry screen for the Shape code 9 (ARC Bar). However, the permits you to draw more than the entered leg amount - **Fixed**.
11. **RRCP-31** The straight bars all changed to MK once the Alpha code was modified - **Fixed**.
12. **RRCP-45** Unable to insert label through callout in multi range method. However, selecting the rebar able to insert the label - **Fixed**.
13. **RRCP-41** For the circular object, the varying bar was drawn. Following that, I used audit and reassign command. Some of the varying bar callouts are converted to a single bar callout. However, the Bar Bending Schedule displays all varying bars – **Fixed**.
14. **RRCP-40** If we copied a group of callout and then used the CALLOUT REPOSITION Command to alter the callout location, it did not shift from its previous position - **Fixed**.
15. **RRCP-61** While stretching the bar and range, if we undo, the bar and range are converted to lines - **Fixed**.