



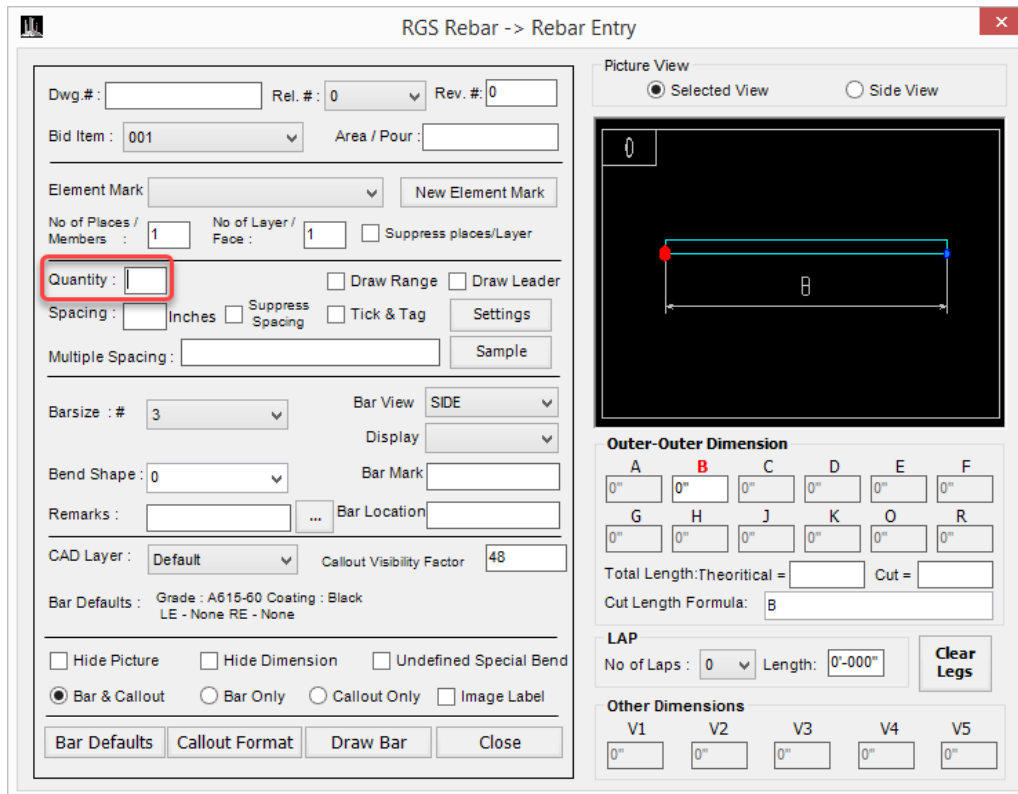
**RGS REBAR**

**Version 4.0.20.20**

**Release Date – 28 July 2022**

## New option

1. Id 833 Create the label again through choosing the label
2. Id 831 The default cursor is now visible in the Quantity text field on the rebar entry screen.



RGS Rebar -> Rebar Entry

Dwg.#: [ ] Rel.#: 0 Rev.#: 0

Bid Item: 001 Area / Pour: [ ]

Element Mark [ ] New Element Mark

No of Places / Members: 1 No of Layer / Face: 1  Suppress places/Layer

Quantity: [1]  Draw Range  Draw Leader

Spacing: [ ] Inches  Suppress Spacing  Tick & Tag Settings

Multiple Spacing: [ ] Sample

Barsize: # 3 Bar View: SIDE Display: [ ]

Bend Shape: 0 Bar Mark: [ ]

Remarks: [ ] Bar Location: [ ]

CAD Layer: Default Callout Visibility Factor: 48

Bar Defaults: Grade: A615-60 Coating: Black LE - None RE - None

Hide Picture  Hide Dimension  Undefined Special Bend

Bar & Callout  Bar Only  Callout Only  Image Label

Bar Defaults Callout Format Draw Bar Close

Picture View:  Selected View  Side View

Outer-Outer Dimension

A	B	C	D	E	F
0"	0"	0"	0"	0"	0"
G	H	J	K	O	R
0"	0"	0"	0"	0"	0"

Total Length: Theoretical = [ ] Cut = [ ]

Cut Length Formula: B

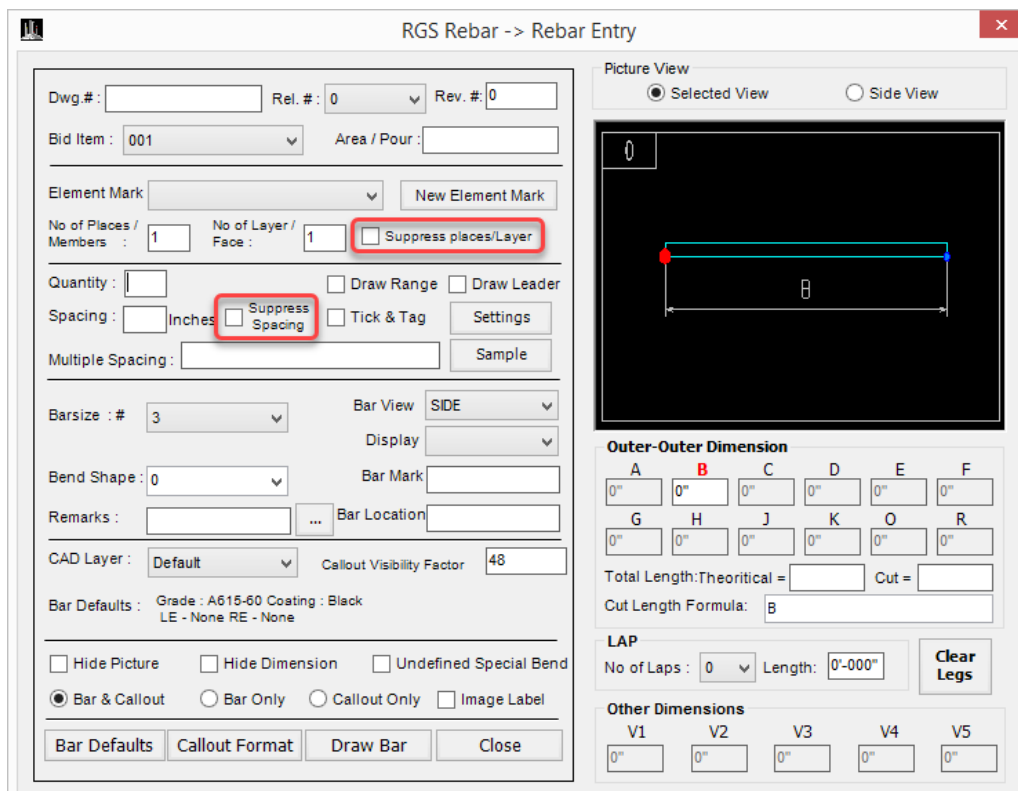
LAP

No of Laps: 0 Length: 0'-000" Clear Legs

Other Dimensions

V1	V2	V3	V4	V5
0"	0"	0"	0"	0"

3. Id 674: A choice to Suppress the Spacing and Member/Layer  
There is a checkbox labelled Suppress c/c and Member/Layer on the rebar entry form.  
Example: The spacing and member/layers will be hidden if we choose this option and won't be seen in the callout.



RGS Rebar -> Rebar Entry

Dwg.#: [ ] Rel.#: 0 Rev.#: 0

Bid Item: 001 Area / Pour: [ ]

Element Mark [ ] New Element Mark

No of Places / Members: 1 No of Layer / Face: 1  Suppress places/Layer

Quantity: [1]  Draw Range  Draw Leader

Spacing: [ ] Inches  Suppress Spacing  Tick & Tag Settings

Multiple Spacing: [ ] Sample

Barsize: # 3 Bar View: SIDE Display: [ ]

Bend Shape: 0 Bar Mark: [ ]

Remarks: [ ] Bar Location: [ ]

CAD Layer: Default Callout Visibility Factor: 48

Bar Defaults: Grade: A615-60 Coating: Black LE - None RE - None

Hide Picture  Hide Dimension  Undefined Special Bend

Bar & Callout  Bar Only  Callout Only  Image Label

Bar Defaults Callout Format Draw Bar Close

Picture View:  Selected View  Side View

Outer-Outer Dimension

A	B	C	D	E	F
0"	0"	0"	0"	0"	0"
G	H	J	K	O	R
0"	0"	0"	0"	0"	0"

Total Length: Theoretical = [ ] Cut = [ ]

Cut Length Formula: B

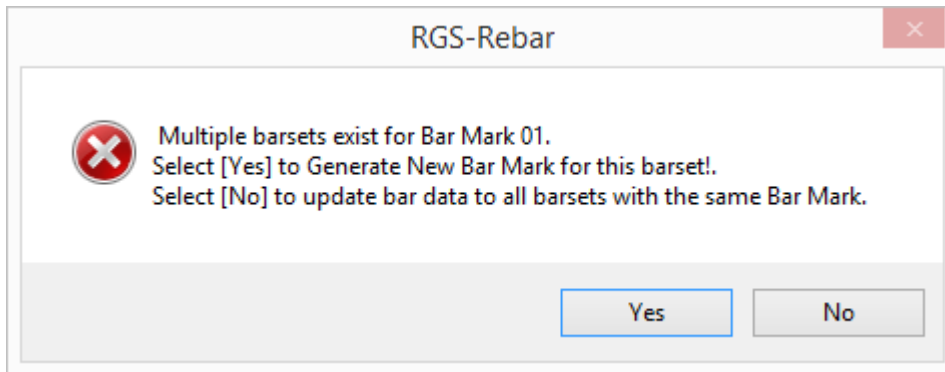
LAP

No of Laps: 0 Length: 0'-000" Clear Legs

Other Dimensions

V1	V2	V3	V4	V5
0"	0"	0"	0"	0"

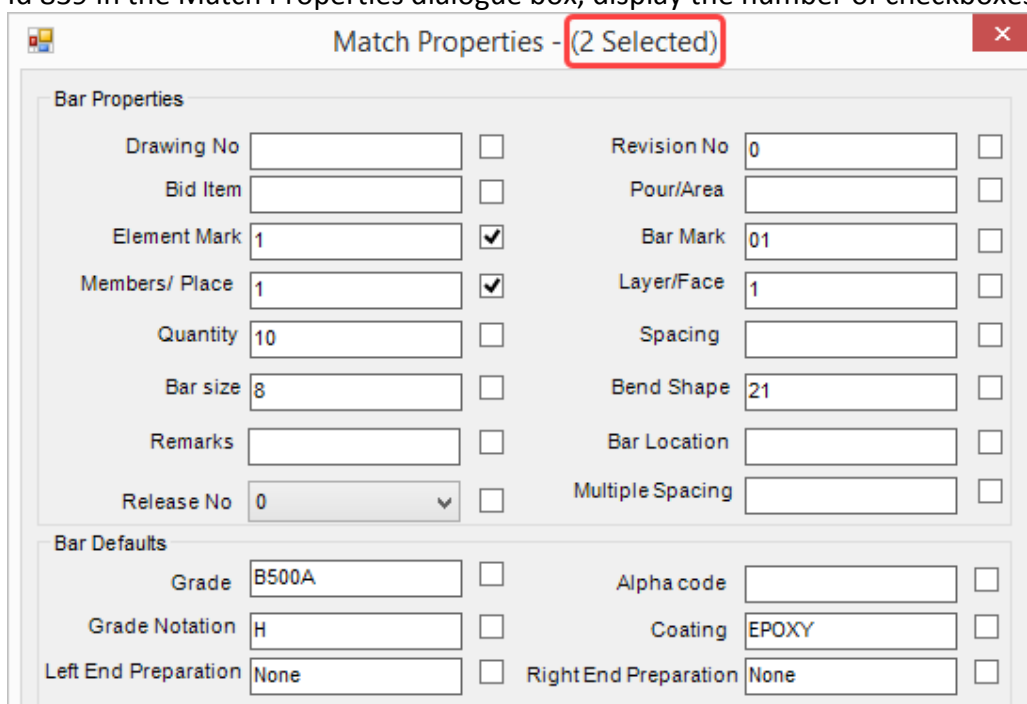
4. Id 700 – The popup notice will show while modifying rebar parameters.  
 Multiple barsets exist for bar mark  
 It will Generate new BM – Yes: Create a new bar mark for this barset.  
 Global change - No : To update bar data for all barsets that have the same bar mark.



5. Id 816a There is an option to generate a drawing in model space without creating a scale region.
- a. Ribbon Menu → RGS Scale -> Scale area -> Default Scale
  - a. To Create
    - Step 1: Execute the DEFAULTSCALE command
    - Step 2: Select a scale value
    - Step 3: Click the Save button. After that create a drawing
  - b. To Edit
    - Step 1: Execute the DEFAULTSCALE command
    - Step 2: Select a scale value
    - Step 3: Click the Save & Apply button. Select the RGS rebar entities Using window selection.

### Improvement

1. Id 839 in the Match Properties dialogue box, display the number of checkboxes that are selected.



2. Id 827 An option for placing Place Bend Shape in horizontal and vertical directions.

Bar Bending Schedule

Report Format: Format 1 \_Bend bars and ...

Header Details

Job Number: V6-139 Detailing Code: ACI 315\_99

Job Name: ACI 315\_99 Drawing No.:

Customer Name: RGS-CAD ENGG PVT LTD Revision No.:

Job Location: CHENNAI Prepared By:

Description 1: Prepared Date: 27-07-2022

Description 2: Checked By:

Custom Attribute Checked Date: 27-07-2022

Place Based on

AlphaCode  Member Based

Include Varying Bars

Include Varying Table  Bend Shape / Row 0  Weight Report with Straight Bars

Page based  No. of Rows

Container based  None

Point Selection for Placing

Automatic Point Selection Offset Distance: Inches

Icons: [Icons for file operations and Pdf]

### Bug

- Id 848 An option to create dummy rebar donut (Use the Command DUMMYBARDONUT)
  - Ribbon Menu → RGS Rebar → Range → Dummy Bar Donut
- Id 840/841 Even when the length of the bar does not exceed the length, the Bar length exceeds pop-up dialogue box appears when drawing a straight bar. - Fixed