

Version 4.0.20.20



RGS REBAR

Release Date – AUGUST 2023

2. RRCP - 1256 / QG2 – 1863 & QG2 – 1864

A New filter tab option and Takeoff description has been provided in Coupler data manager

Coupler Data Manager

Brand: **All** Type:

LENTON
 HRC
 THREADED END

| From Size | To Size | Coupler Part No | Thread Part No | Coupler End Preparation | Thread End Preparation | Coupler Modification Length | Thread Modification Length | Coupler Diameter | Coupler Length | Extension | Takeoff Description | Coupler Image Name |
|-----------|---------|-----------------|----------------|-------------------------|------------------------|-----------------------------|----------------------------|------------------|----------------|-----------|---------------------|--------------------|
| 4 | 4 | EL12A2 | | EPL4 / EL12A2 | EPL4 | 0 | -1 | 0.6875 | 1.625 | A2 | | COUPLER |
| 5 | 5 | EL16A2 | | EPL5 / EL16A2 | EPL5 | 0 | -1.25 | 0.875 | 2.1875 | A2 | | COUPLER |
| 6 | 6 | EL20A2 | | EPL6 / EL20A2 | EPL6 | 0 | -1.75 | 1.0625 | 2.8125 | A2 | | COUPLER |
| 7 | 7 | EL22A2 | | EPL7 / EL22A2 | EPL7 | 0 | -1.75 | 1.1875 | 3.15625 | A2 | | COUPLER |
| 8 | 8 | EL25A2 | | EPL8 / EL25A2 | EPL8 | 0 | -2 | 1.375 | 3.34375 | A2 | | COUPLER |
| 9 | 9 | EL28A2 | | EPL9 / EL28A2 | EPL9 | 0 | -2 | 1.5 | 3.59375 | A2 | | COUPLER |
| 10 | 10 | EL32A2 | | EPL10 / EL32A2 | EPL10 | 0 | -2.25 | 1.75 | 3.78125 | A2 | | COUPLER |
| 11 | 11 | EL36A2 | | EPL11 / EL36A2 | EPL11 | 0 | -2.25 | 1.875 | 3.96875 | A2 | | COUPLER |
| 14 | 14 | EL43TA2 | | EPL14 / EL43TA2 | EPL14 | 0 | -3 | 2.25 | 5.25 | A2 | | COUPLER |
| 18 | 18 | EL57TA2 | | EPL18 / EL57TA2 | EPL18 | 0 | -3.75 | 3 | 6.46875 | A2 | | COUPLER |
| 5 | 4 | EL1612A2 | | EPL5 / EL1612A2 | EPL4 | 0 | 2.25 | 0.875 | 2.3125 | A2T | | COUPLER |
| 6 | 5 | EL2016A2 | | EPL6 / EL2016A2 | EPL5 | 0 | 2.25 | 1.0625 | 3 | A2T | | COUPLER |
| 7 | 6 | EL2220A2 | | EPL7 / EL2220A2 | EPL6 | 0 | 2.25 | 1.1875 | 3.40625 | A2T | | COUPLER |
| 8 | 7 | EL2522A2 | | EPL8 / EL2522A2 | EPL7 | 0 | 2.25 | 1.375 | 3.6875 | A2T | | COUPLER |
| 9 | 8 | EL2825A2 | | EPL9 / EL2825A2 | EPL8 | 0 | 2.5 | 1.5 | 3.90625 | A2T | | COUPLER |
| 10 | 8 | EL3225A2 | | EPL10 / EL3225A2 | EPL8 | 0 | 2.5 | 1.75 | 4 | A2T | | COUPLER |
| 10 | 9 | EL3228A2 | | EPL10 / EL3228A2 | EPL9 | 0 | 2.5 | 1.75 | 4.125 | A2T | | COUPLER |
| 11 | 9 | EL3628A2 | | EPL11 / EL3628A2 | EPL9 | 0 | 2.75 | 1.875 | 4.21875 | A2T | | COUPLER |
| 11 | 10 | EL3632A2 | | EPL11 / EL3632A2 | EPL10 | 0 | 2.75 | 1.875 | 4.3125 | A2T | | COUPLER |
| 14 | 10 | EL43T3A2 | | EPL14 / EL43T3A2 | EPL10 | 0 | -3 | 2.25 | 5 | A2T | | COUPLER |
| 14 | 11 | EL43T36A2 | | EPL14 / EL43T36A2 | EPL11 | 0 | -3 | 2.25 | 5.09375 | A2T | | COUPLER |
| 18 | 11 | EL57T36A2 | | EPL18 / EL57T36A2 | EPL11 | 0 | -3.5 | 3 | 5.6875 | A2T | | COUPLER |
| 18 | 14 | EL57T43TA2 | | EPL18 / EL57T43TA2 | EPL14 | 0 | -3.75 | 3 | 6.3125 | A2T | | COUPLER |
| 4 | 5 | EL1216A2 | | EPL4 / EL1216A2 | EPL5 | 0 | 2.25 | 0.875 | 2.3125 | A2T | | COUPLER |
| 5 | 6 | EL1620A2 | | EPL5 / EL1620A2 | EPL6 | 0 | 2.25 | 1.0625 | 3 | A2T | | COUPLER |
| 6 | 7 | EL2022A2 | | EPL6 / EL2022A2 | EPL7 | 0 | 2.25 | 1.1875 | 3.40625 | A2T | | COUPLER |
| 7 | 8 | EL2225A2 | | EPL7 / EL2225A2 | EPL8 | 0 | 2.25 | 1.375 | 3.6875 | A2T | | COUPLER |
| 8 | 9 | EL2528A2 | | EPL8 / EL2528A2 | EPL9 | 0 | 2.5 | 1.5 | 3.90625 | A2T | | COUPLER |

3. RRCP - 1181 / QG2 – 1736 & QG2 - 1737

A New cancel option has been provided in Rebar dimensions entry box

RGS-Rebar - Dimensional Entry

Outer-Outer Dimension

Total Length Theoretical = Cut =

Cut Length Formula:

LAP

No of Laps: Length:

Other Dimensions

Improvement

1. RRCP - 1213 / QG2 – 1784 & QG2 – 1785

Need to add Coupler dia and Coupler nos option in Report file settings box in data field
For this the Coupler dia and Coupler nos option added in data field

Step.1

Open → Job properties → Job preference → Report → Edit field settings

Step.2

Choose Add New field option, and add the Coupler dia and fill the field settings and follow the same above for Coupler nos respectively in data field then save the Report format in Drawing

| Headino/Field | Field11 | Field12 | Field13 | Field14 | Field15 | Field16 | Field17 | Field18 | Field19 |
|---------------|---------|---------|---------|---------|---------|---------|-------------|--------------|---------|
| Title | R | G | H | J | K | O | Coupler Dia | Coupler Nos. | |
| Title | enter | Center | Center | Center | Center | Center | Center | Center | |
| Data Field | R | G | H | J | K | O | Coupler Dia | Coupler Nos. | |
| Data Field | enter | Center | Center | Center | Center | Center | Center | Center | |
| Field | 6 | 0.6 | 0.6 | 0.6 | 0.6 | 0.6 | 0.6 | 0.6 | |
| Grand | o | No | No | No | No | No | No | No | |
| Unit | o | No | No | No | No | No | No | No | |
| Total | o | No | No | No | No | No | No | No | |
| Adopt | o | No | No | No | No | No | No | No | |

| Total Qty. | Bar Size | Total Length | Bar Mark | Bend type | BENDING DIMENSIONS | | | | | | | | | | | Coupler Dia | Coupler Nos. | |
|------------|----------|--------------|----------|-----------|--------------------|---------|---|---|---|----|---|---|---|---|---|-------------|--------------|----|
| | | | | | A | B | C | D | E | FR | G | H | J | K | O | | | |
| 30 | #18 | 10'-03" | | | | 10'-03" | | | | | | | | | | | 2.257 | 30 |
| 21 | #8 | 10'-03" | | | | 10'-03" | | | | | | | | | | | 1 | 21 |
| 15 | #5 | 10'-03" | | | | 10'-03" | | | | | | | | | | | 0.625 | 15 |

2. RRCP - 1210 / QG2 – 1779 & QG2 – 1783

Need to mention the Epoxy bar weight in the EP column in the BBS.

For this the Epoxy, Black, Galvanised, Dipping weight option added in data field

Step.1

Open → Job properties → Job preference → Report → Edit field settings

Step.2

Choose Add New field option, and add the Epoxy weight and fill the field settings and follow the same above for Black, Galvanized, Dipping weight respectively in data field then save the Report format in Drawing

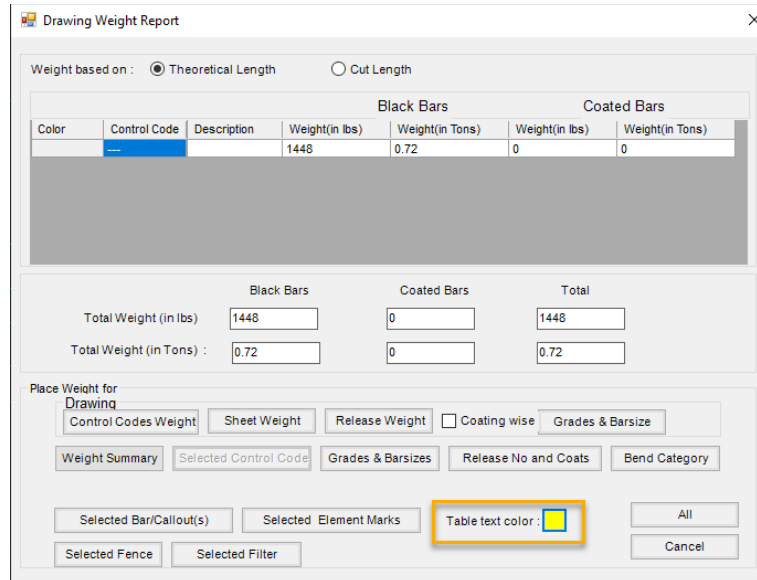
| Headino/Field | Field10 | Field11 | Field12 | Field13 | Field14 | Field15 | Field16 | Field17 | Field18 |
|---------------|---------|---------|---------|---------|---------|---------|---------|-------------|--------------|
| Title | | F/R | G | H | J | K | O | Coupler Dia | Coupler Nos. |
| Title | enter | Center | Center | Center | Center | Center | Center | Center | Center |
| Data Field | | F-R | G | H | J | K | O | Coupler Dia | Coupler Nos. |
| Data Field | enter | Center | Center | Center | Center | Center | Center | Center | Center |
| Field | .6 | 0.6 | 0.6 | 0.6 | 0.6 | 0.6 | 0.6 | 0.6 | 0.6 |
| Grand | o | No | No | No | No | No | No | No | No |
| Unit | o | No | No | No | No | No | No | No | No |
| Total | o | No | No | No | No | No | No | No | No |
| Adopt | o | No | No | No | No | No | No | No | No |

| Total Qty. | Bar Size | Total Length | Bar Mark | Bend type | BENDING DIMENSIONS | | | | | | | | | | | Epoxy Weight | Black Weight | Galvanized weight | Dipping Weight | |
|------------|----------|--------------|----------|-----------|--------------------|-------------|---|---|---|--------|---|---|------------|---|---|--------------|--------------|-------------------|----------------|----|
| | | | | | A | B | C | D | E | F/R | G | H | J | K | O | | | | | |
| 1 | #9 | 12'-03" | | | | 12'-03" | | | | | | | | | | | 42 | | | |
| 1 | #8 | 10'-03" | | | | 10'-03" | | | | | | | | | | | | 27 | | |
| 3 | #8 | 12'-11" | 8U1003 | 2 | 1'-04" | 10'-03" | | | | 1'-04" | | | | | | | | 34 | 34 | 34 |
| 1 | #9 | 14'-09" | 9H1203 | 1 | 1'-03" | 12'-03" | | | | 1'-03" | | | 0'-11 3/4" | | | | | 50 | | |
| 1 | #9 | 16'-09 3/4" | 9H1402 | 1 | 1'-03" | 14'-02 3/4" | | | | 1'-03" | | | 0'-11 3/4" | | | | | | 57 | |
| 1 | #9 | 12'-03 1/2" | 9H910 | 1 | 1'-03" | 9'-03 1/2" | | | | 1'-03" | | | 0'-11 3/4" | | | | | 42 | | |
| Total: 322 | | | | | | | | | | | | | | | | | | | | |

3. RRCP - 1242 / QG2 – 1831 & QG2 – 1832

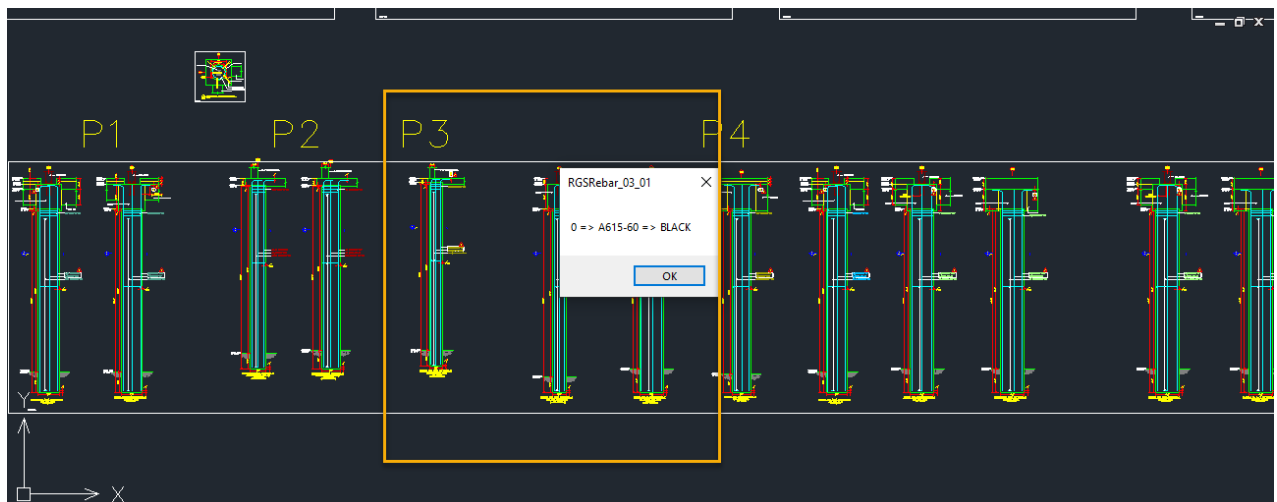
BBS blocks arrangements has been improved.

- 4. **RRCP - 1240 / QG2 – 1833 & QG2 – 1834**
BBS Bend shape block moving has been improved.
- 5. **RRCP - 1258 / QG2 – 1865 & QG2 – 1866**
A new option provided to choose table text color.



Bug

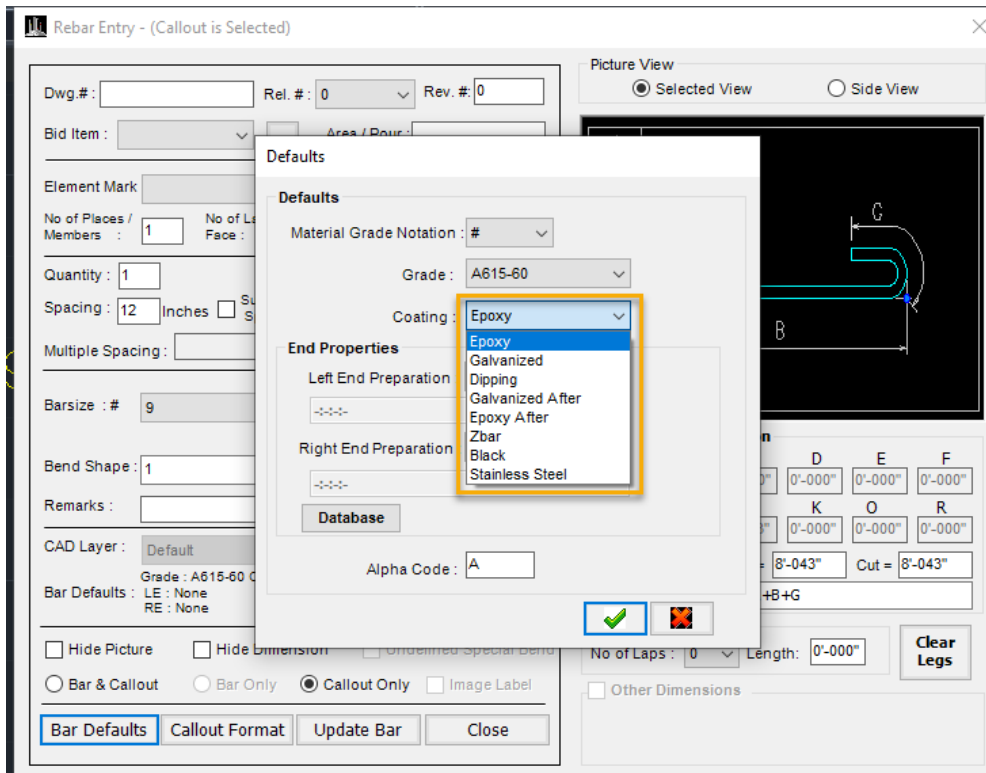
- 1. **RRCP - 1203 / QG2 – 1766 & QG2 - 1767**
While using RELEASE ORDER, while assigning the bars the popup occurs showing multiple coating, this bug has resolved.



- 2. **RRCP - 1197 / QG2 – 1760 & QG2 - 1761**
While adding a multi range in callout, cannot able to double click and open the callout. also while click the range, this popup was coming, this bug has resolved.

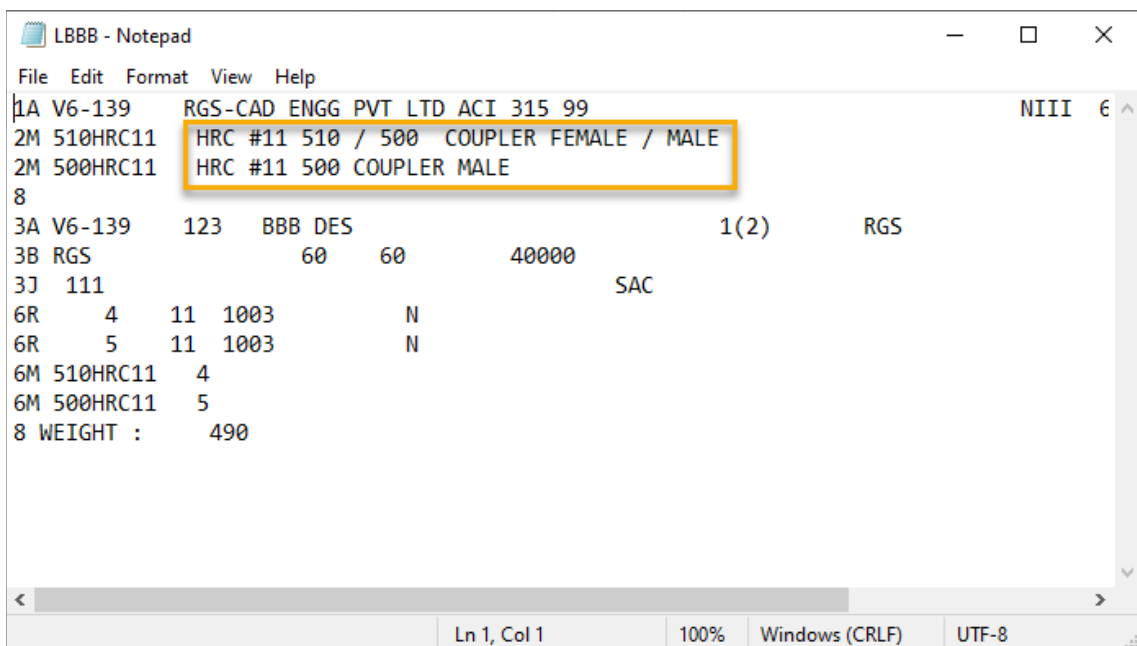
3. RRCP - 1196 / QG2 – 1755 & QG2 - 1756

While using the old rebar entry type, cannot able to change the coating of a bar by clicking the callout, this bug has been fixed.



4. RRCP - 1187

While using taking the barlist, female coupler details are not listed , this bug has been fixed.



5. RRCP - 1179 / QG2 – 1715 & QG2 - 1716

While creating a Library the error box appears, this bug has been fixed.

6. RRCP - 1197 / QG2 – 1760 & QG2 - 1761

Multi range with callout bus has been fixed.

7. RRCP - 1180 / QG2 – 1717 & QG2 - 1718

Layiso stretch bug has been fixed.

8. RRCP - 1178 / QG2 – 1713 & QG2 – 1714

Stretching a bar bug has been fixed

9. QG2 – 1739

Two bars stretch bug has been fixed

10. RRCP - 1251 / QG2 – 1849 & QG2 – 1850

Rounding arc bar bug has been fixed