

Version 4.0.20.20



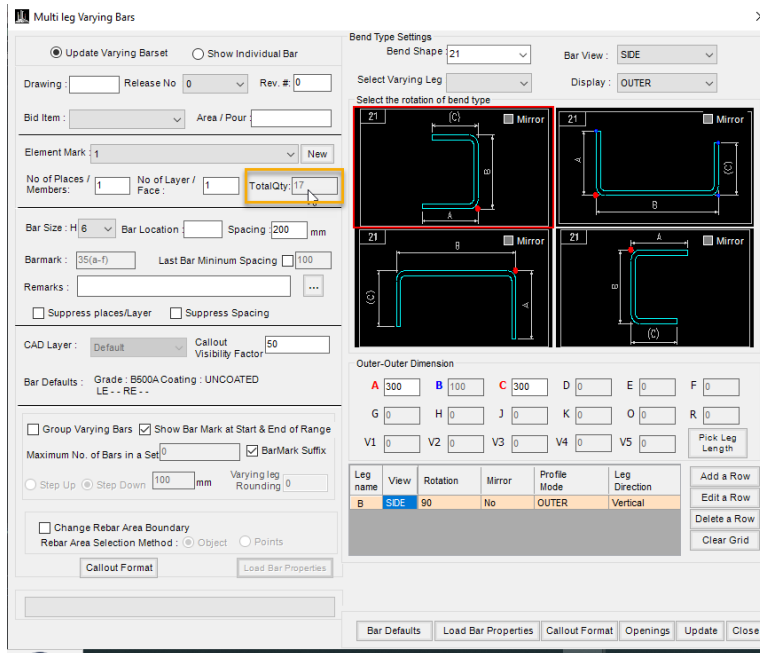
**RGS REBAR**

**Release NOTES – FEBRUARY 2024**

## Improvement

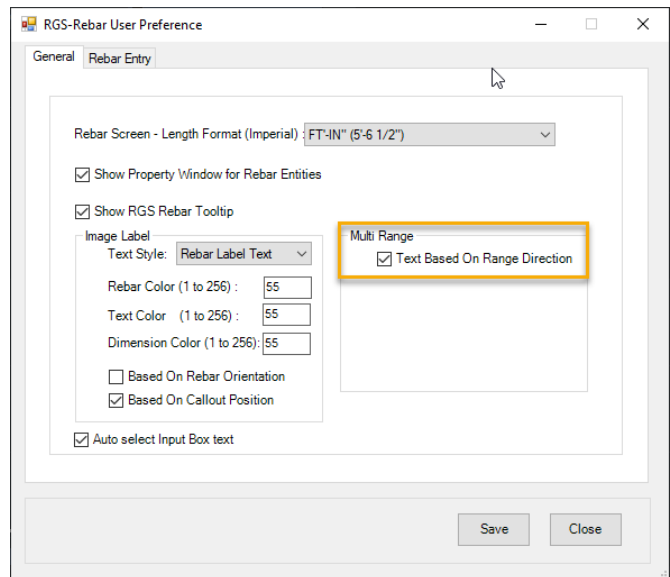
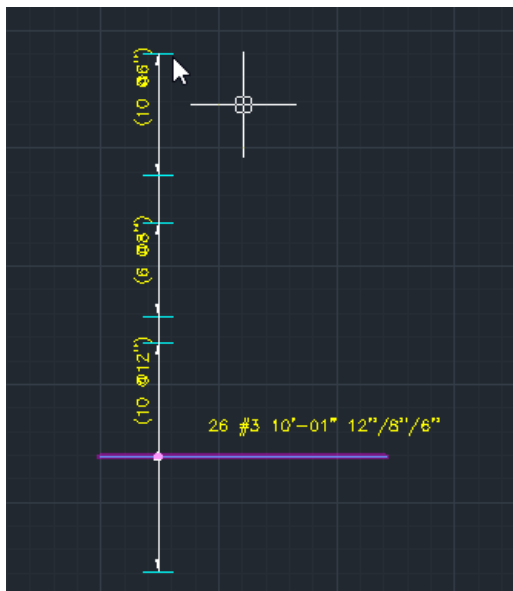
### 1. RRCP - 1466 / QG2 – 2293 & QG2 – 2294

Varying bar total quantity can be show in the rebar entry box



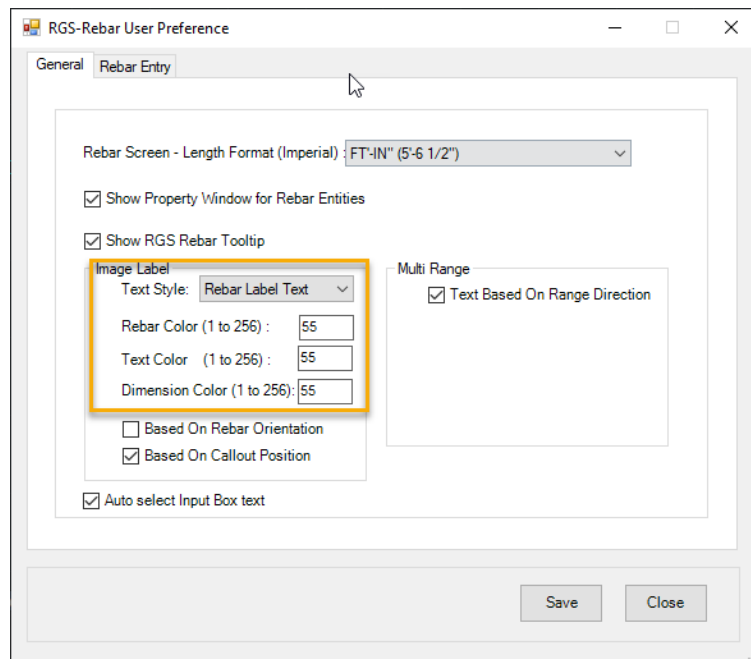
### 2. RRCP - 1445 / QG2 – 2249 & QG2 – 2250

The range text orientation can be changed from rgssuserpreference command



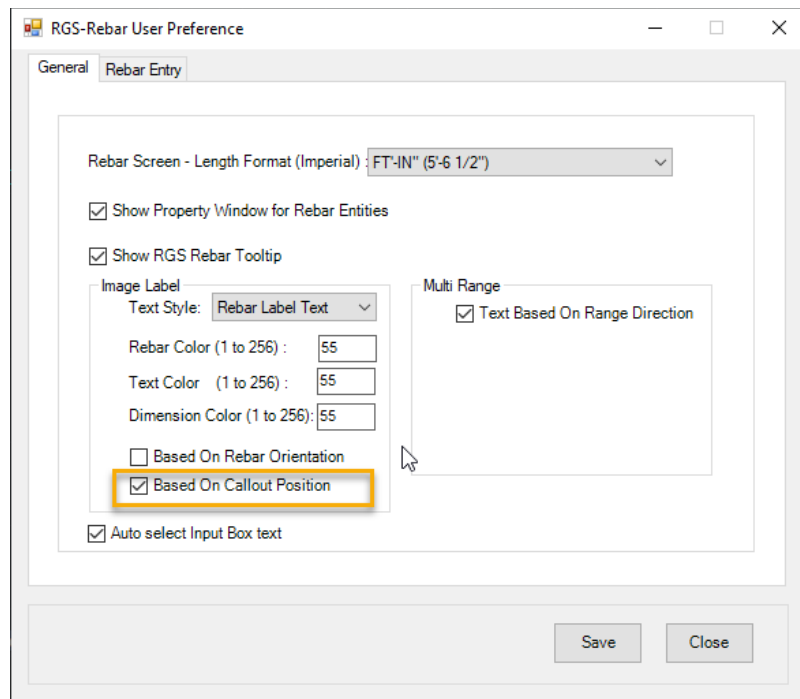
### 3. RRCP - 1420 / QG2 – 2205 & QG2 – 2206

A separate option to choose the rebar, range, dimension for the Image label option in rguserpreference command is provided



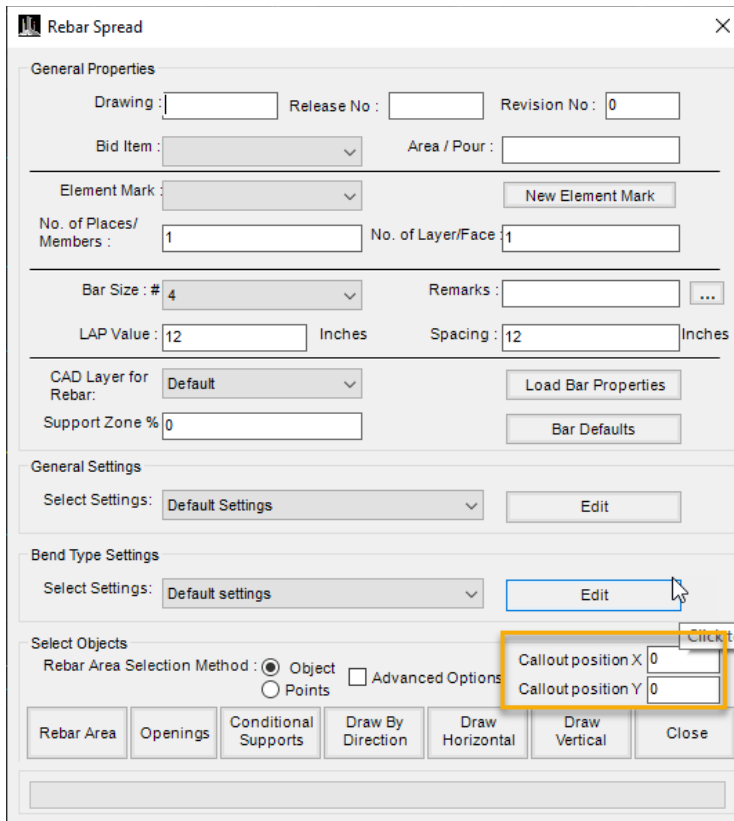
### 4. RRCP - 1478 / QG2 – 2307 & QG2 – 2308

Now Image Label Orientation can be changed based on callout



5. RRCP - 1479 / QG2 – 2311 & QG2 – 2313

An option provided to change callout position in rebar spread option



6. RRCP - 1480 / QG2 – 2310 & QG2 – 2312

Image label on Multi range bars and varying bars also now can be available



## **Bug**

- 1. RRCP - 1458 / QG2 – 2276 & QG2 - 2277**  
Now can able to edit the spacing in multi range edit option
- 2. RRCP - 1433 / QG2 – 2229 & QG2 - 2230**  
Image label bug in scale area has resolved
- 3. RRCP - 1428 / QG2 – 2223 & QG2 - 2224**  
Changealphacodeall command resolved
- 4. RRCP - 1421 / QG2 – 2208 & QG2 - 2209**  
Alternate callout deleting issue resolved
- 5. RRCP - 1416 / QG2 – 2198 & QG2 - 2199**  
Alternate callout issue has resolved