



RGS REBAR

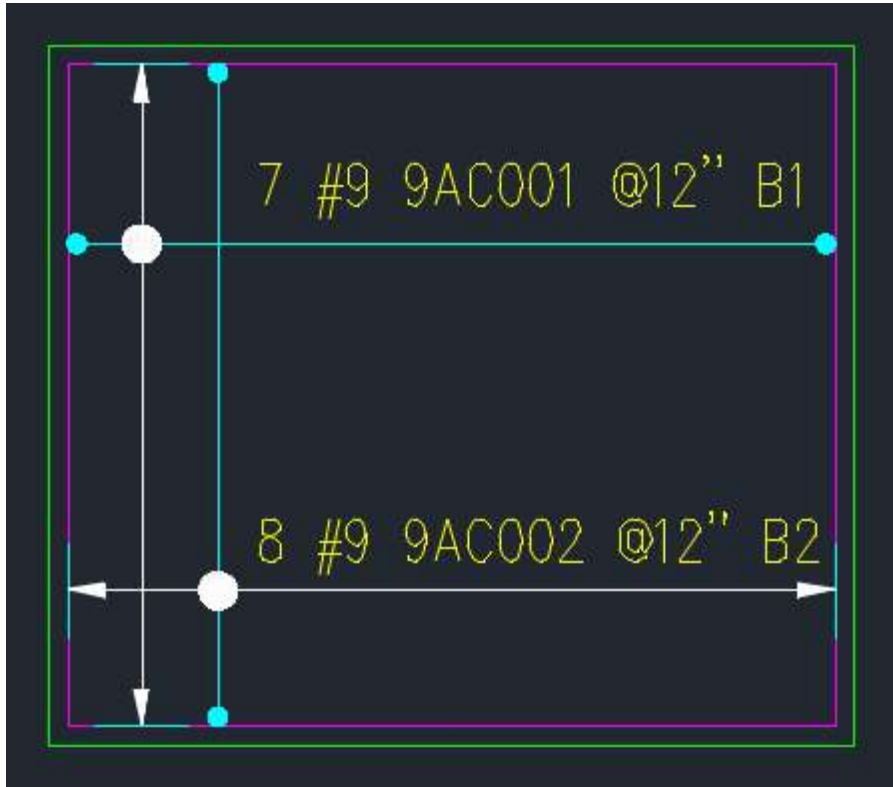
Version 4.0.20.20

Release Date – 25 DECEMBER 2025

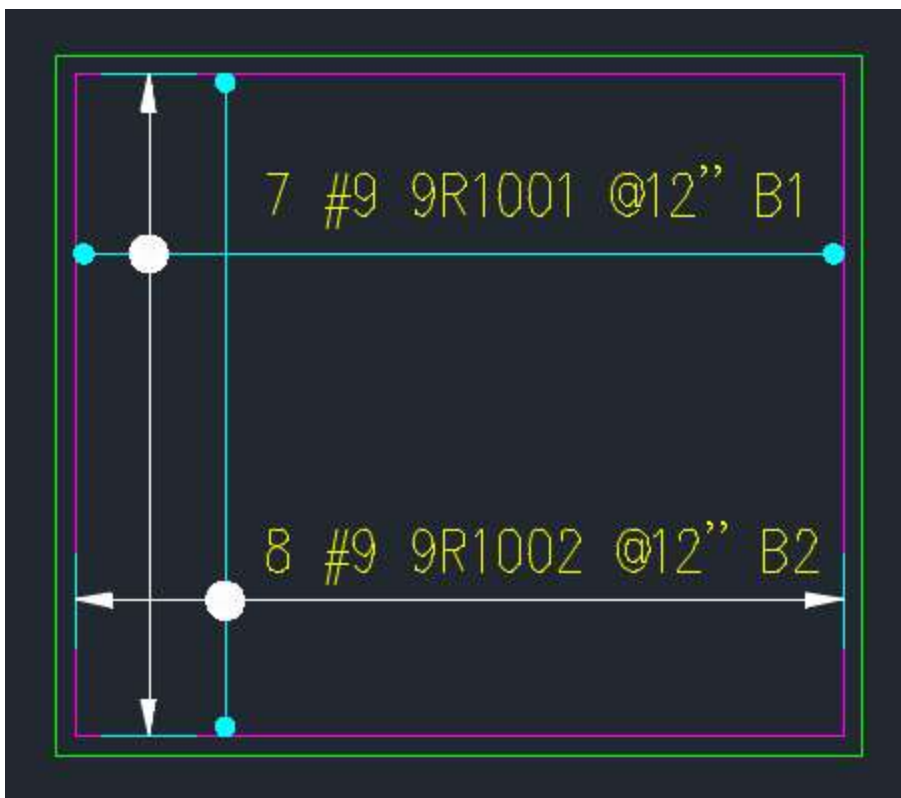
New Features

1. **RRCP – 1819 / QG2 – 3013 / QG2 – 3014** The facility to use two-letter bar mark alpha codes (prefixes) that is, either two alphabetic letters or a combination of one alphabet and one numeric character is now available.

- Two alphabetic letters (e.g., AA, AB, AC, etc.)



- One alphabet and one numeric character (e.g., A1, B2, C3, etc.)



2. RRCP – 1834 / QG2 – 3048 / QG2 – 3049 ASA format has been modified per some client requests and kept as an alternate option in take off format.

Take off

TakeOff Details

Takeoff Format : R-aSa Location : asa

Job Details

Client Job No. : V6-139 Detailing Code : ACI 315_99

Job Name : ACI 315_99 Drawing No. :

Customer Name : RGS-CAD ENGG PVT LTD Revision No. :

Job Location : Prepared By :

Description 1 : Prepared Date : 30-10-2025

Description 2 : Checked By :

Control Code : Checked Date : 30-10-2025

Release No. : Reference :

Bid Item : SAC Code :

BidItem Code : Sub ReleaseID :

Selection Method

Use Existing Control Code Remove Coating Abbreviation

Select Bars & Callouts Include Bar Labels in selection Convert Total Weight Format

Select Element Marks Include Bar Views in selection

New Selection Add Entities Remove Entitie Selected Color :

Sorting Type

Sorting Type : Type 1 Type 2

Bar mark format

Bar Mark format in Reports 01(a)

ADD VERSION ADD REMARKS ADD SPACELINE EXTENDED Format 2

Go

3. RRCP – 1873 / QG2 – 3087 / QG2 – 3090 An option has been added to assign individual bar marks to all bars, even when their specifications are identical.

RGS-Rebar User Preference

General Rebar Entry

Rebar Screen - Length Format (Imperial) : FT"IN" (5/6 1/2)

Show Property Window for Rebar Entities

Show RGS Rebar Tooltip

Donut to be drawn based on DataFile

Image Label

Text Style : RGS Image Label

Rebar Color (1 to 256) : 130

Text Color (1 to 256) : 130

Dimension Color (1 to 256) : 62

Based On Rebar Orientation

Based On Callout Position

Auto select Input Box text

Do Audit While Saving

Consider Arc Bar as Straight Bar over the radius : mm inch

Bar Size Remapping :

Multi Range

Text Based On Range Direction

BBS

Show Straight Bar BendType in BBS

Custom Sort For Varying Bars

Show Both Imperial and Metric

Retain Decimal in BBS

Alternate Range

Display "ALT" for All Callout

Varying Range

4A01 (a-j) 4A01(a-j)

Revision Cloud

Revision Cloud Size : 110 (Default Value = 110)

Length : 2 (Callout Height /)

Remove Fraction from Callout and Label in Straight Bar

Consider Range and Bar as a single set

Different Barmark for Same Property bars

Save Close

4. RRCP – 1893 / QG2 – 3113 / QG2 – 3114 A new facility has been introduced that allows rebar bend deduction values and formulas for each bend shape to be revised according to diameter.

Bend Deduction

Bend Type : 21

BarSize : 10

Bend Deduction : 4

Close Save

5. RRCP – 1909 / QG2 – 3141 / QG2 – 3142 Two dynamic weight report formats based on Drawing / Diameter / Grade / Coating, i.e., Weight Report with and without Total Weight have been created.

Drawing Weight Report

Weight based on : Theoretical Length Cut Length

			Black Bars		Coated Bars	
Color	Control Code	Description	Weight(in kg)	Weight(in Tons)	Weight(in kg)	Weight(in Tons)
	---		13963.5	13.96	0	0

Total Weight (in kg) Black Bars: 13963.5 Coated Bars: 0 Total: 13963.5

Total Weight (in Tons) : Black Bars: 13.96 Coated Bars: 0 Total: 13.96

Place Weight for

Drawing

Control Codes Weight Sheet Weight Release Weight Coating wise Grades & Barsize

Weight Summary Selected Control Code Grades & Barsizes Release No and Coats Bend Category

Coupler Export to excel **Dwg No. and Grade without total weight** **Dwg No. and Grade with total weight**

Selected Bar/Callout(s) Selected Element Marks Table text color : All

Selected Fence Selected Filter Convert Total Weight Format Cancel

Sample reports:

DWG NO	R01			DWG NO	R01		
Grade				Grade			
BAR SIZE	B500A(UNCOATED)	B500B(UNCOATED)	B500C(UNCOATED)	BAR SIZE	B500A(UNCOATED)	B500B(UNCOATED)	B500C(UNCOATED)
H6	568.5			H6	568.5		
H8	139			H8	139		
H12	2622.5			H12	2622.5		
H14	2416			H14	2416		
B14		117		B14		117	
C14			117	C14			117
H18	16	13		H18	16	13	
H20	7954.5			H20	7954.5		
TOTAL				TOTAL			
					13717	129.5	117
SUB TOTAL				SUB TOTAL			
						13983.5	
GRAND TOTAL				GRAND TOTAL			
						13983.5	

Improvement

1. RRCP – 1798 / QG2 – 2968 / QG2 – 2988 In rebar entry screen at Couplers section, Grip Twist Female & Male End properties were added to use as left & right end preparations.

Defaults

Defaults

End Properties

Left End Preparation : None

Right End Preparation : None

Database

None
None
Bar Grip
Double bevel
Grip TWist f LH&Stud
Grip Twist female-RH
Grip Twist male-RH
Lenton Thread New
Saw Cut
Threaded
Single bevel
Coupler
A2
A12

Defaults

Defaults

End Properties

Left End Preparation : None

Right End Preparation : None

Database

None
Bar Grip
Double bevel
Grip TWist f LH&Stud
Grip Twist female-RH
Grip Twist male-RH
Lenton Thread New
Saw Cut
Threaded
Single bevel
Coupler
A2
A12

Bugs

1. **RRCP – 1800 / QG2 – 2971 / QG2 – 2972** TSV format bar list issues have been resolved in USA detailing code. – **Fixed.**
2. **RRCP – 1849 / QG2 – 3061 / QG2 – 3062** CSF format bar list issues have been resolved in USA detailing code. – **Fixed.**
3. **RRCP – 1856 / QG2 – 3075 / QG2 – 3076** Soule format bar list issues have been resolved in USA detailing code. – **Fixed.**
4. **RRCP – 1874 / QG2 – 3088 / QG2 – 3089** Linear/Varying Taper range issues have been fixed.
5. **RRCP – 1900 / QG2 – 3124 / QG2 – 3125** The range discrepancy, where different values are calculated for the same range length, has been fixed.
6. **RRCP – 19005/ QG2 – 3135 / QG2 – 3140** The issue where the quantity disappears from the callout and sometimes appears in the bar reference has been fixed.