

VISKAR BIM – GRID MULTIPLE CHOICE QUESTIONS

1. How many types of co-ordinate system are available in Viskar BIM ?
 - a) 2
 - b) 3
 - c) 4
 - d) 5

2. What is the default grid system in Viskar BIM?
 - a) Cartesian Co-ordinate system
 - b) Cylindrical Co-ordinate system
 - c) Circular Co-ordinate system
 - d) None of the above

3. Centre point and Start point should be selected from what directions to draw a Clockwise circumferential grid?
 - a) Left to right
 - b) Right to left
 - c) Any points
 - d) at the same points

4. Can negative values be entered as grid intervals?
 - a) Yes
 - b) No

5. In what direction will the grid angle rotate the grid system?
 - a) Clockwise
 - b) Anti clockwise
 - c) Horizontal
 - d) Vertical

-
6. Which string allows to skip a particular grid mark?
- a) Skip string
 - b) Release string
 - c) Exception string
 - d) Allow string
7. Where will the grid views be saved?
- a) Saved View
 - b) Grid view
 - c) User saved view
 - d) Save Current view
8. When using the UGS three point option, a grid view is created _____ to the selected three points.
- a) Parallel
 - b) Perpendicular
 - c) Vertical
 - d) Horizontal
9. Which option allows to create a grid on the face of the objects?
- a) Grid on face
 - b) Grid face
 - c) UGS – Two points
 - d) UGS – Three points
10. What does “co-ordinate” in the UGS – Basic of XY plane (Plan View) indicate?
- a) Distance in X – Axis
 - b) Distance in Y – Axis
 - c) Distance in Z – Axis

d) Co-ordinate points

11. Which option allows to edit/delete a single grid line from the grid system?

a) Grid Mode

b) Grid

c) Grid line edit

d) Grid system

12. What is the alternate method to draw a circumferential grid?

a) Angle and distance method

b) Radius and distance method

c) Angle and radius method

d) Angle method

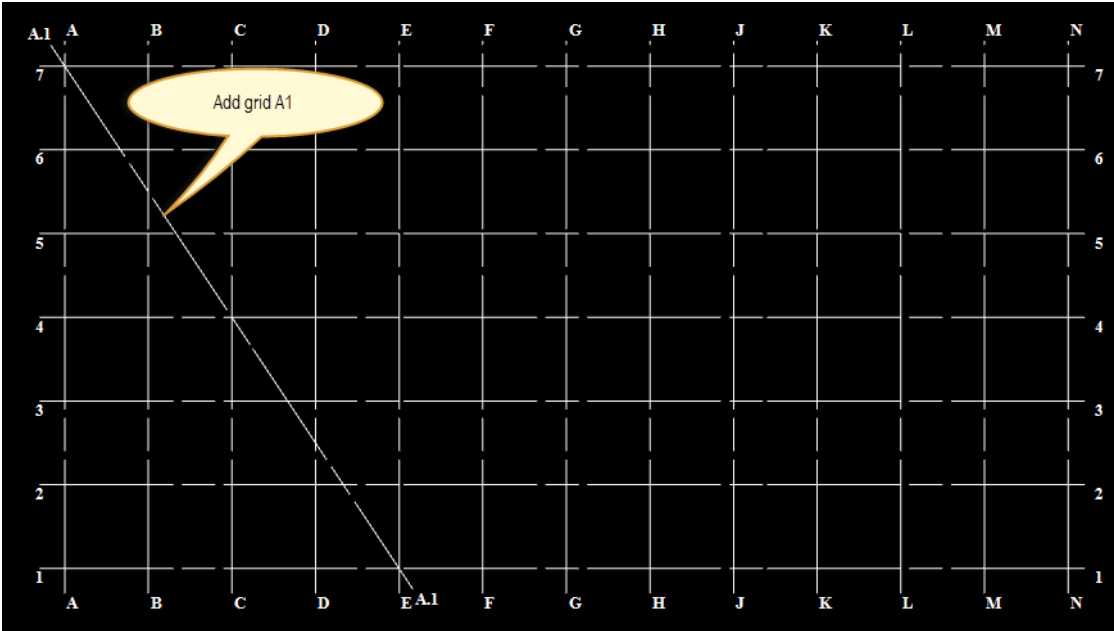
13. Viskar allows the user to add a linear grid in the Z-axis

a) True

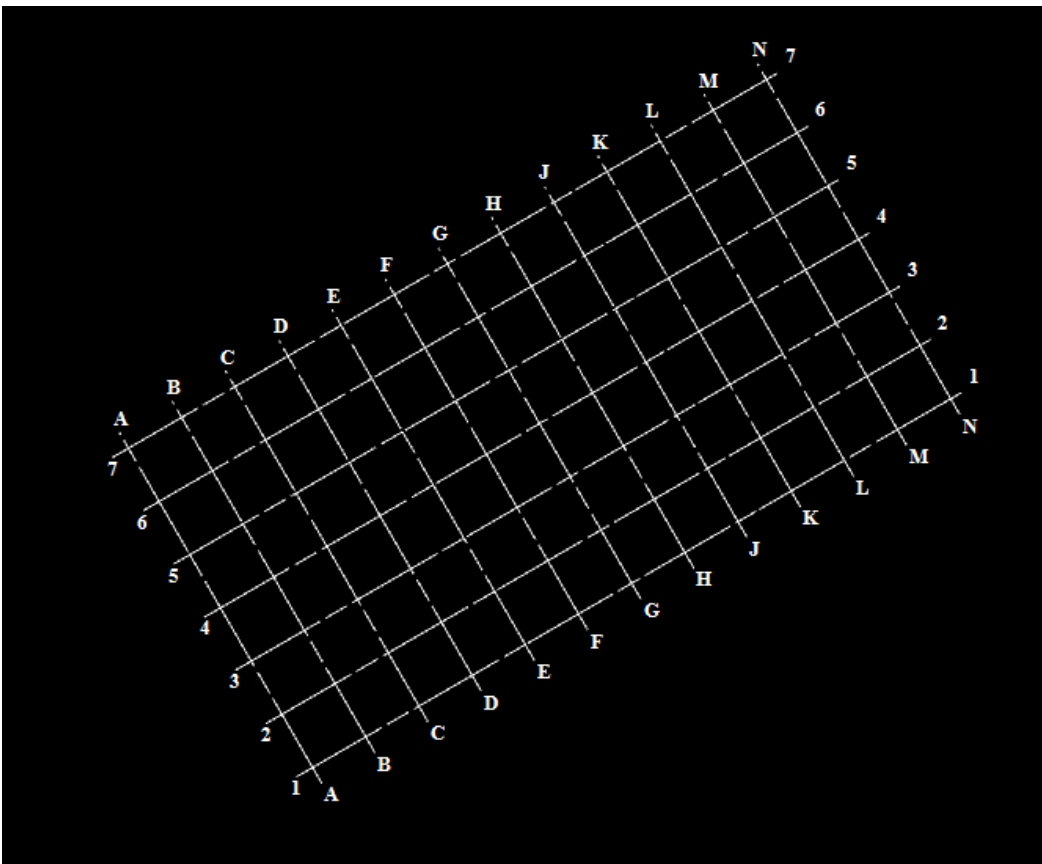
b) False

VISKAR BIM – EXERCISE

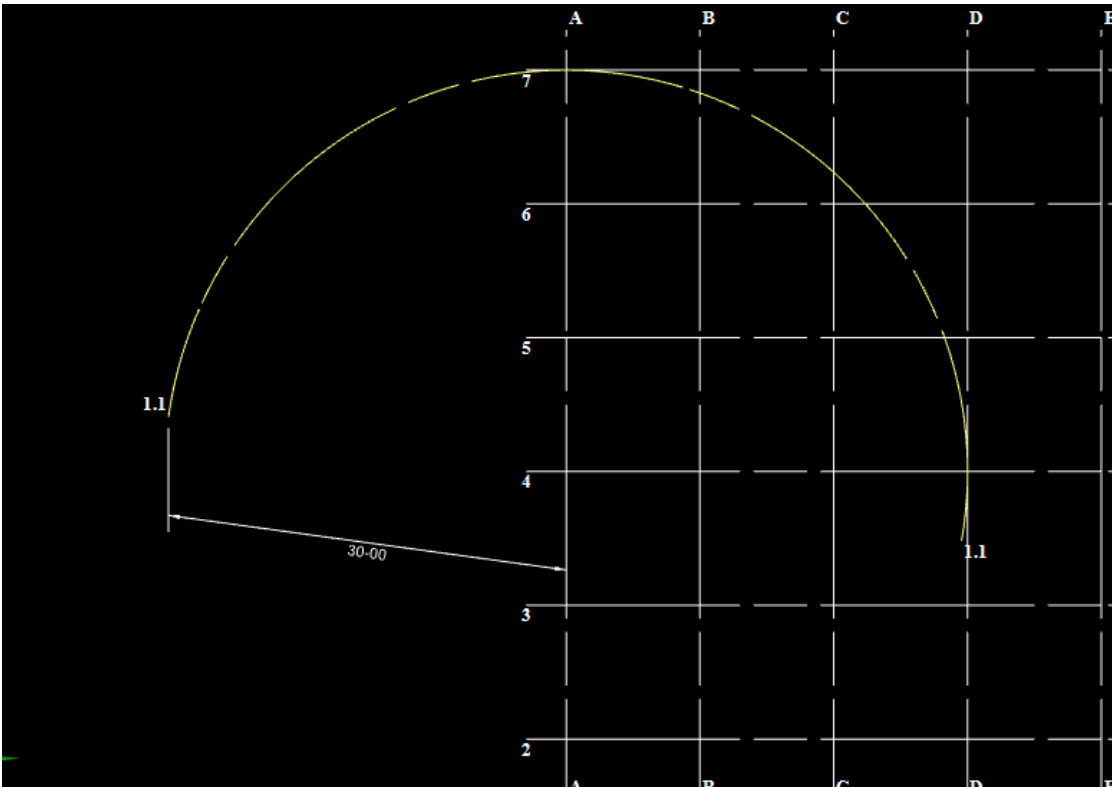
1. Add a Linear grid A.1 as shown below.



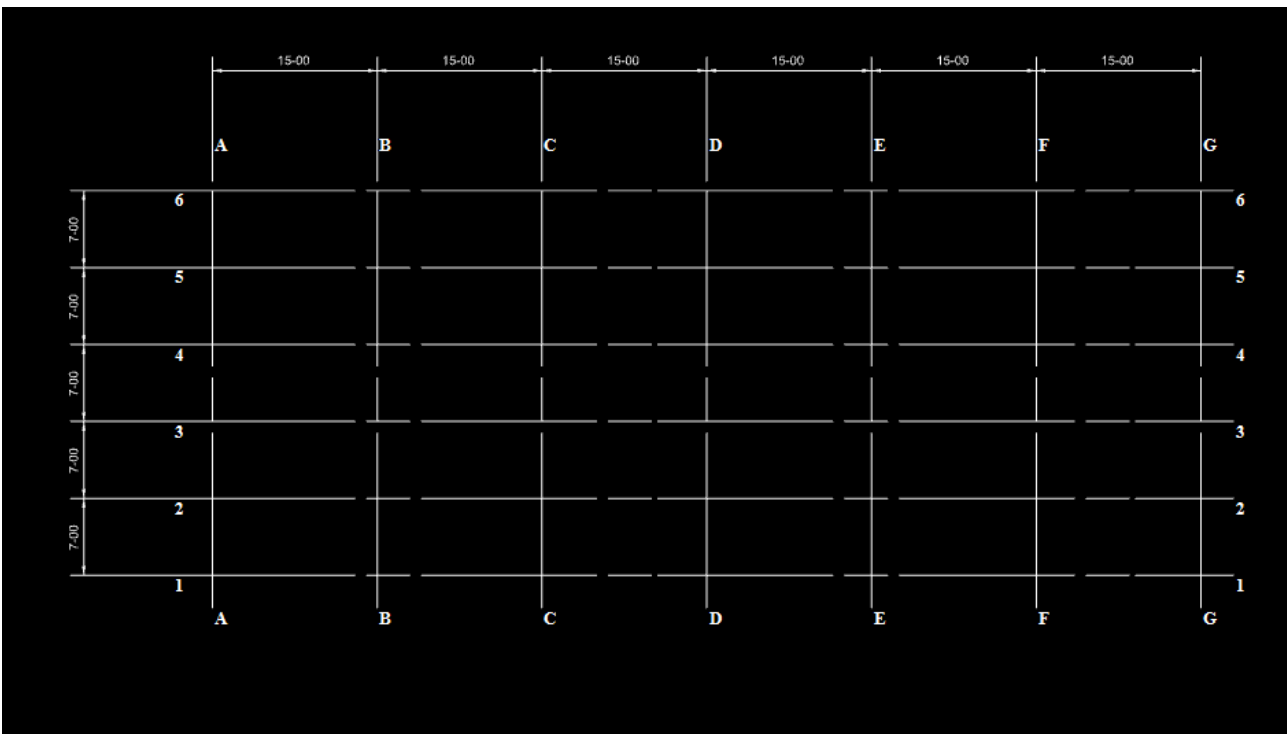
2. Rotate the default grid System to 35 °



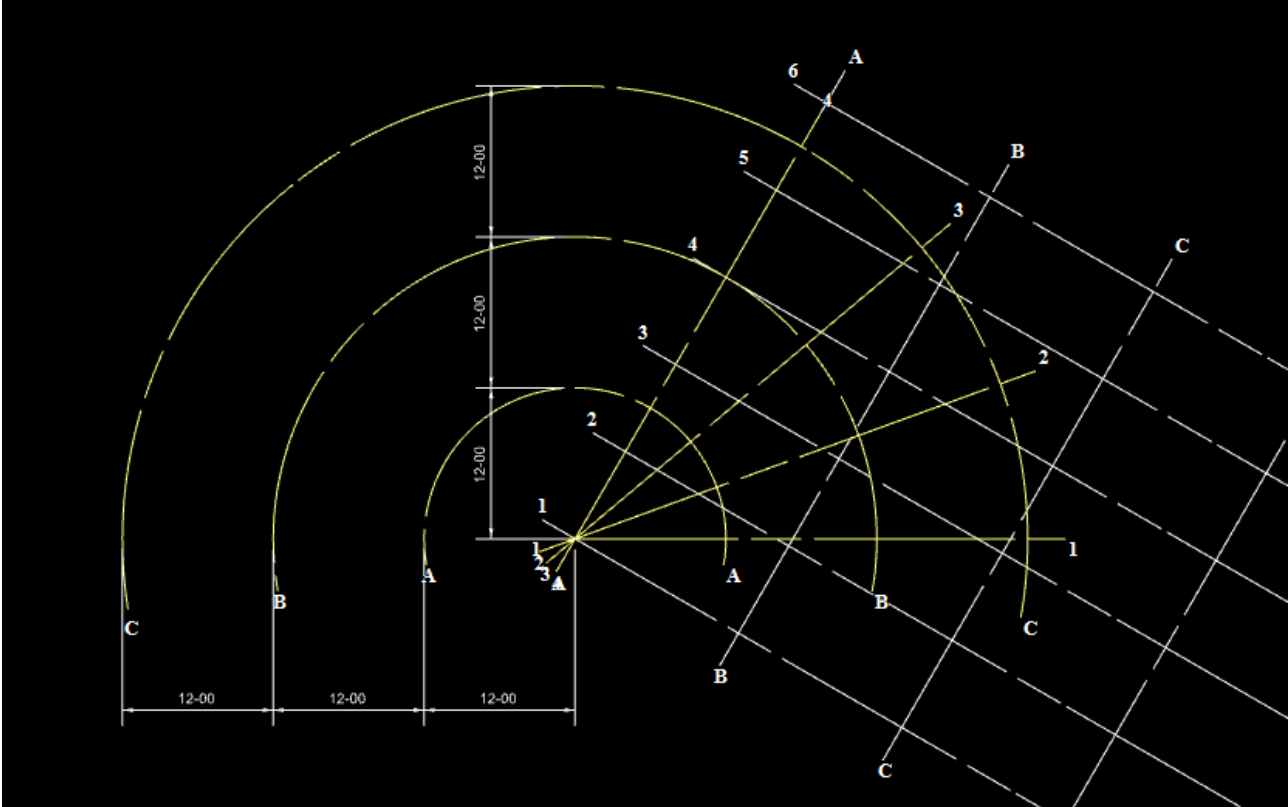
3. Add a grid R1 as shown below



4. Edit the Default grid system as shown below



5. Create a circumferential grid line as shown below & the origin point the both grids should be 0,0 & rotate the Cartesian Co-ordinate to 35 °



6. Change the line type scale.

EXCERCISE QUESTIONS

1. User can add & delete the grid line.

- a) True
- b) False

2. How many grid types available in viskar?

3. User cannot copy the grid system

- a) True
- b) False

4. What is the value of angle restricted to rotate the linear grid system?