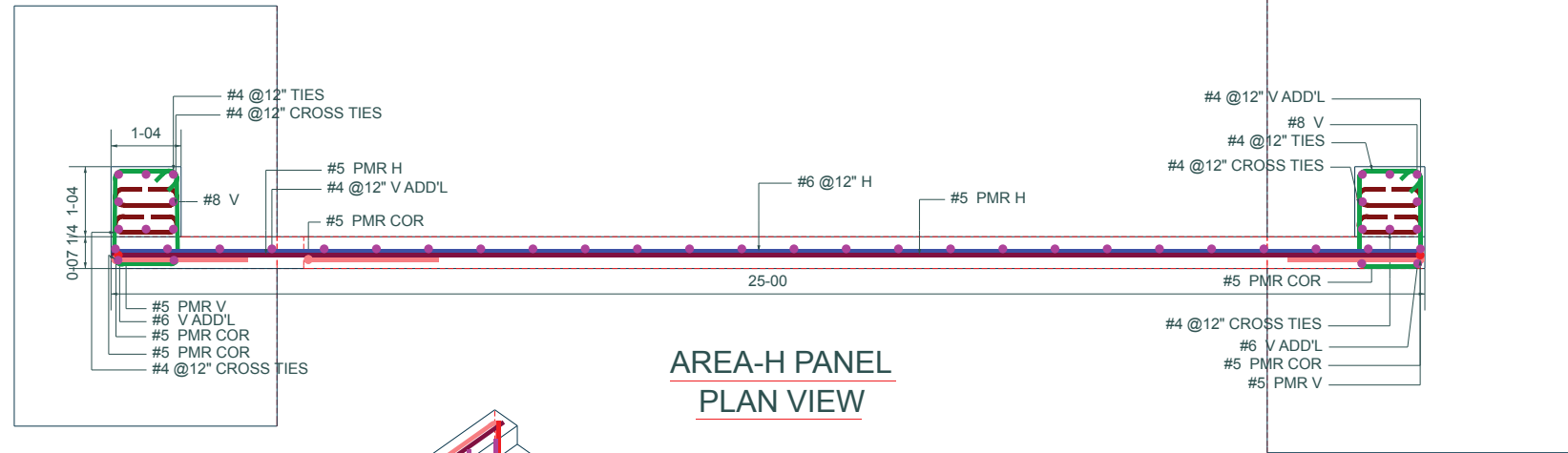
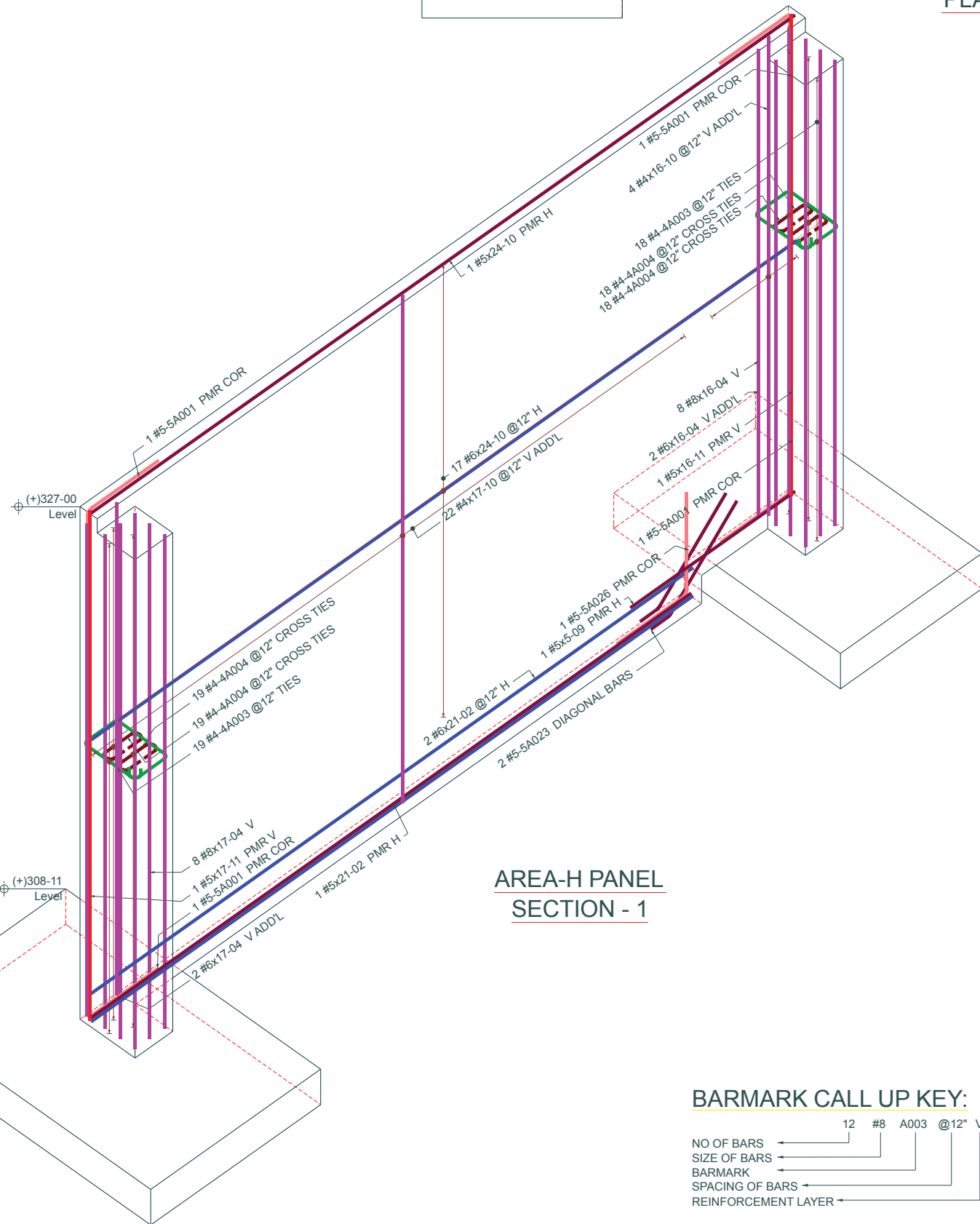


TILT-UP PANEL WALL

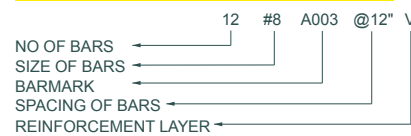


**AREA-H PANEL
PLAN VIEW**



**AREA-H PANEL
SECTION - 1**

BARMARK CALL UP KEY:

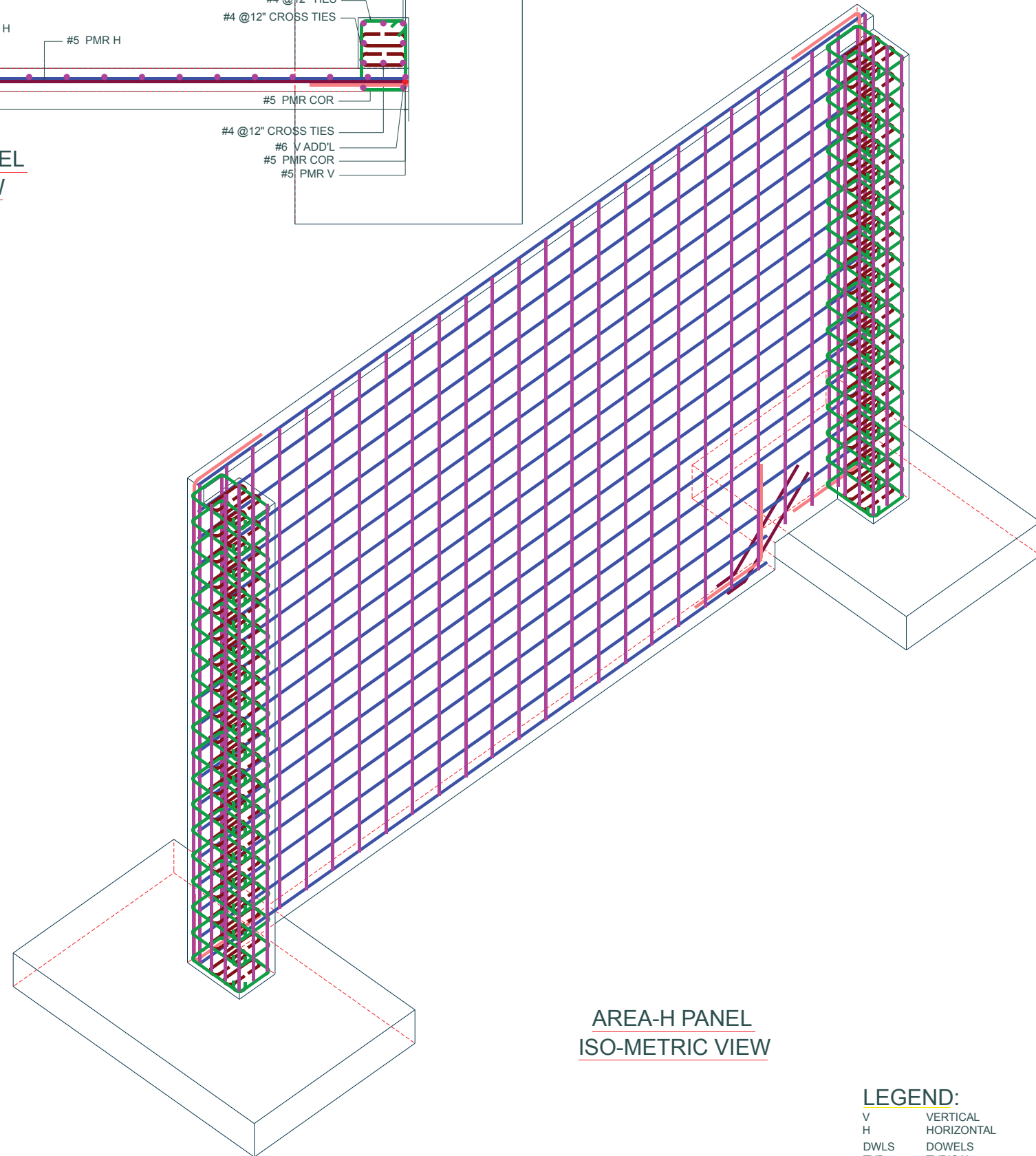


STRUCTURAL REFERENCE:

FOR FLOOR PLAN REF : S101A THRU S101H, S201A THRU S201D, S301 THRU S303
FOR SECTION REF : S901 THRU S907

ARCHITECTURAL REFERENCE:

FOR FLOOR ELEVATIONS REF : A0100, A0110a, A110b, A110c, A110d, A202 & A220



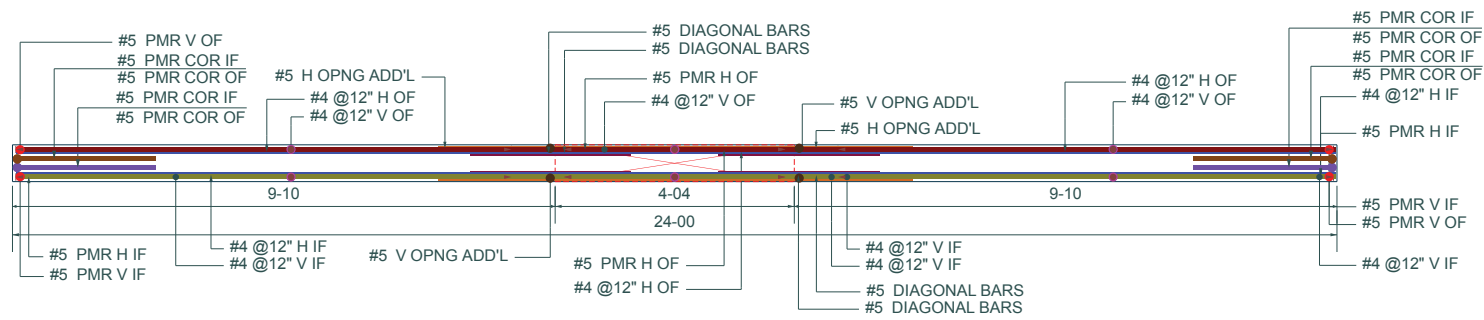
**AREA-H PANEL
ISO-METRIC VIEW**

COVER DETAILS:

1. TYPICAL CLEARANCE ARE AS FOLLOWS
PANELS :-
ALL SIDES - 3/4"

LEGEND:

V	VERTICAL
H	HORIZONTAL
DWLS	DOWELS
TYP.	TYPICAL
COR.	CORNER
IF	INNER FACE
OF	OUTER FACE
PMR.	PERIMETER
ADD'L	ADDITIONAL
OPNG.	OPENING
K.O.	KNOCK-OUTS
BOT	BOTTOM
THK.	THICKNESS
FFL	FINISH FLOOR LEVEL
TOF	TOP OF FOOTING
TOP	TOP OF PANEL



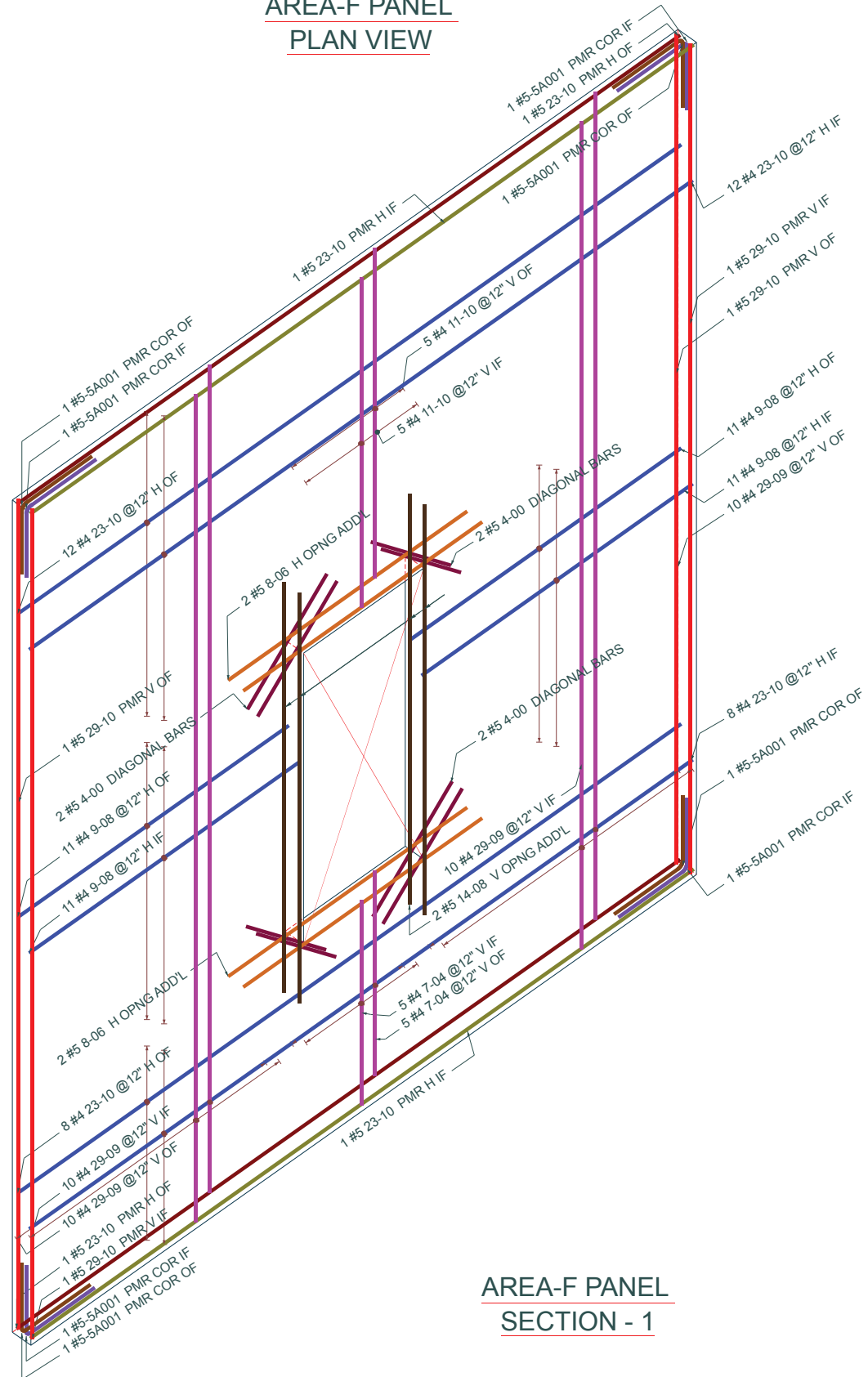
BEND SCHEDULE

MARK	SIZE	QTY	SHAPE	A	B	C	D	E	F	G	H	J	K	O	R
4A003	#4	37	T1	0-04 1/2	1-02 1/2	1-09 3/4	1-02 1/2	1-09 3/4		0-04 1/2					
4A004	#4	74	T17	0-06	1-02 1/2					0-06					
5A001	#5	12	17		2-06	2-06									
5A023	#5	2	3		3-04	0-08					0-06		0-05 1/2	3-09 1/2	
5A026	#5	1	17		2-06	3-07									

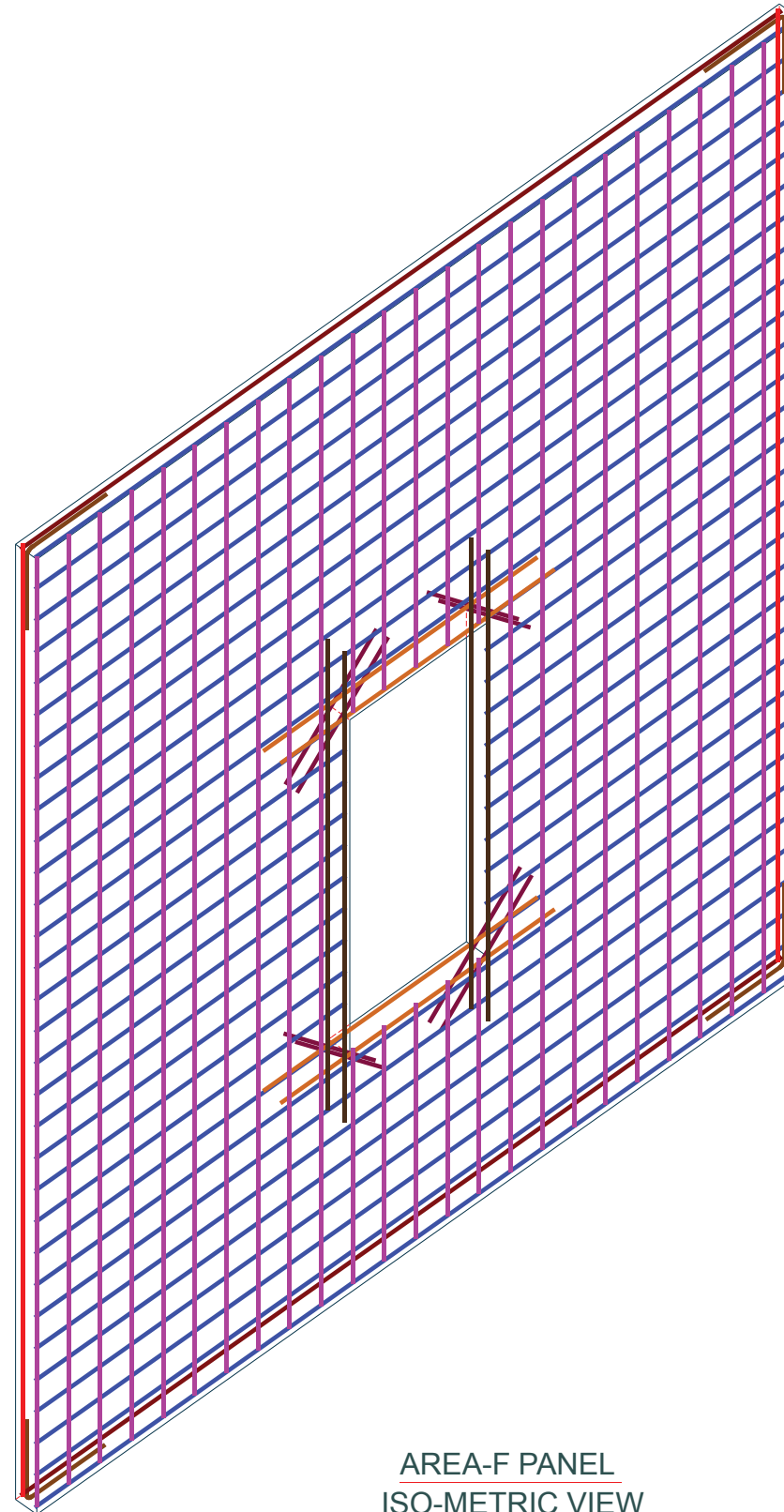
REBAR WEIGHT SUMMARY

BAR SIZE	GRADE USED	NO. OF BARS	WEIGHT (LBS)	REBAR UNIT WEIGHT
#4	A615-60	281	2427.99	0.67
#5	A615-60	44	521.50	1.04
#6	A615-60	23	798.81	1.50
#8	A615-60	16	719.12	2.67
Grand Total		364	4467.42	

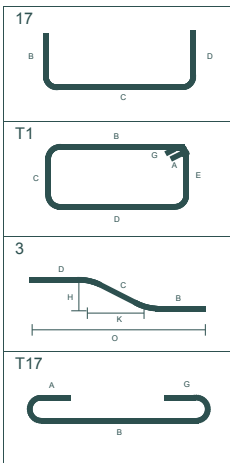
AREA-F PANEL PLAN VIEW



AREA-F PANEL SECTION - 1



AREA-F PANEL ISO-METRIC VIEW



STRUCTURAL REFERENCE:

FOR FLOOR PLAN REF : S101A THRU S101H, S201A THRU S201D, S301 THRU S303
FOR SECTION REF : S901 THRU S907

ARCHITECTURAL REFERENCE:

FOR FLOOR ELEVATIONS REF : A0100, A0110a, A110b, A110c, A110d, A202 & A220

COVER DETAILS:

1. TYPICAL CLEARANCE ARE AS FOLLOWS
PANELS :-
ALL SIDES - 3/4"

LEGEND:

V VERTICAL
H HORIZONTAL
DWLS DOWELS
TYP. TYPICAL
COR. CORNER
COR. CORNER
IF INNER FACE
OF OUTER FACE
PMR. PERIMETER
ADD'L ADDITIONAL
OPNG. OPENING
K.O. KNOCK-OUTS
BOT BOTTOM
THK. THICKNESS
FFL FINISH FLOOR LEVEL
TOF TOP OF FOOTING
TOP TOP OF PANEL

BARMARK CALL UP KEY:

